

# TIRE CHANGING SYSTEMS



## INNOVATIVE FEATURES DESIGNED FOR THE HIGH VOLUME SHOP.

Productivity that is easy to use.

INTRODUCING THE **T7100S** TIRE CHANGING  
SYSTEM

**JohnBean**<sup>™</sup>

# THE T7100S CENTER POST TIRE CHANGER HIGH-PRODUCTIVITY. EASY



# CHANGING SYSTEM. EASY-TO-USE.

## T7100S DESIGNED WITH OUR CUSTOMERS IN MIND

T7100S center post tire changer designed for easy use with minimal training of technicians reducing shop overhead and adding to your bottom line. Traditional center post design coupled with John Bean's innovative feature set makes this tire changer highly productive and reduces the risk of wheel damage.

## KEY FEATURES

### **PROspeed**

- Rotational speed maximized by automatic inverter control
- Variable from 7 RPM to 18 RPM offering the highest possible speed for maximum productivity

### **SWING ARM STYLE MOUNT/DEMOUNT**

- Traditional mounting head with tire lever
- Quick change design, non-marring plastic and metal mount/demount tools included

### **BEAD PUSHER/TIRE LIFTING TOOL**

- Integrated bead pusher assists in the mount/demount process of the upper bead
- Tire lifting tool aids the technician with the demounting process

### **HAND ACTIVATED BEAD BREAKER**

- Side mounted bead breaker
- Thumb switch activation at the point of use

### **CENTER POST CLAMP DESIGN**

- Reduces risk of wheel damage
- Accommodates a wider range of wheel sizes

### **INTEGRATED WHEEL LIFT**

- Assists technicians with lifting and positioning heavy tires/wheels on the machine
- Integrated roller board eases bead breaking



Swing Arm Style Mount/Demount



Bead Pusher/Tire Lifting Tool



Traditional Bead Breaker



Center Clamp Design



Integrated Wheel Lift

# OPTIONAL ACCESSORIES



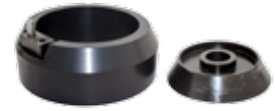
**Pneumatic Bead Assist**  
(EAK0317G91A)



**Bead Holding Clamp**  
(EAA0247G70A)



**Roller Mounting Help Tool** (EAA0304G48A)



**Light Truck Wheel Kit**  
(EAA0349G06A)



**Reverse Mount Wheel Adapter Kit** (EAA0364G00A)



**+4 Quick Exchange Device**  
(EAA0304G48A)

## EQUIPMENT SPECIFICATIONS

- Part Number: EEWH570AU1
- Max Tire Diameter: 44" (112cm)
- Max Tire Width: 15" (38.1cm)
- Max Rim Width: 14" (35.6cm)
- Rim Diameter: 12" - 30"
- Max Air Pressure: 174 PSI (12 BAR)
- Dimensions (D x W x H): 58" x 40" x 76"  
(147.32 x 101.6 x 193.04cm)
- Shipping Weight: 1180 lbs (536kg)
- Power Requirements:  
230V 1Ph 50/60Hz 17A

## WHEEL LIFT SPECIFICATIONS

- Capability: 154lb (70kg)
- Technology: Pneumatic
- Operated by: Foot Pedal
- Platform Height: 1.18" (3cm)

## STANDARD ACCESSORIES

- Smart Bead Spacer
- Plastic Rim Protector
- Plastic Bead Breaker Shovel
- Plastic Tire Protection
- Lube Brush & Paste Bucket
- Mounting Head Protection
- Quick Exchange Tool Kit
- Tire Lever

For more information regarding the **T7100S**  
call **800.362.4618 (US)** or **800.362.4608 (Canada)**  
**www.johnbean.com / www.johnbean.ca**

**JohnBean**™

John Bean is committed to product innovation and improvement. Therefore, specifications listed in this sell sheet may change without notice. ©2016 Snap-on Incorporated. John Bean is a trademark, registered in the United States and other countries, of Snap-on Incorporated. All rights reserved. All other marks are marks of their respective holders.

07/16 SS153522A