


Hydrovac & Sewer Parts/ Accessories

 1-866-962-1218

 achesonparts@westvac.com

 westvac.com



Acheson, AB
26609 111 Ave
T7X 6E1
T 780-962-1218
F 780-962-2230

Calgary, AB
3534 48 Ave SE
T2B 3L6
T 403-272-1334
F 403-272-1584

Surrey, BC
107, 9488 189 St
V4N 4W7
T 604-455-0084
F 604-455-0086

Saskatoon, SK
100, 3926 Burron Ave
S7P 0E1
T 306-975-9400
F 306-975-9404

Winnipeg, MB
2, 1830 Dublin Ave
R3H 0H3
T 204-953-6644
F 204-633-4878

TABLE OF CONTENTS

Dig Tubes, Dig Tube Adapter, Clamps & Accessories -----	Pages 3-11
Boom, EPDM, Lay-Flat Hose, Clamps & Pressure Wash/Hydro-Excavating Hose Asm -----	Pages 12-13
Aluminum Cam Locks -----	Pages 14-16
Pressure Wash/Hydro-Excavating Hose Asm -----	Pages 17
Lances, Spray Guns, Connectors, Wash Down Guns, Reel Components & Unloaders -----	Pages 18-19
WYE Strainers and Components -----	Pages 20
Ripsaw, Machete, Aqua-Rocket, Switch Blade Nozzles and Rebuild Kits -----	Pages 21-22
Suttner Nozzles, Repair Kit, Strainers & Screens -----	Pages 23
Dig Pig Nozzles, Repair Kits, Lances, Lance Accessories & Tool Holders -----	Pages 24-26
Sewer Flushing Hose, Hose Ends, Swivels & Kits, Provers, Tyger Tails and Manhole Tools -----	Pages 27-30
Sewer Manhole Tools-----	Pages 31
Drilled Sewer Flushing Nozzles -----	Pages 32-34
Enz Sewer Flushing Nozzles -----	Pages 35-38

Continued on Next Page

TABLE OF CONTENTS

IBG Sewer Flushing Nozzles -----	Pages 39-42
Pressure & Flow Charts -----	Pages 43-44
Mainline & Lateral Motors, Components, Replacement Parts, Saw Blades and Knives -----	Pages 45-47
Stem, Lever & Ball Valves Plus Replacement Components -----	Pages 48-50
Water Heater Components -----	Pages 51-55
Kri-Tech Electrical Safety Gear -----	Pages 56
Vac-con Blower, Electrical, Tank Components -----	Pages 57-59
Blower Filters -----	Pages 60
Global Sensor Kits & Components -----	Pages 61
Manufacturer Part Number INDEX -----	Pages 62-67



Part Number	Size	WHS
UE-U42586	4"	
WV-RLC5	5"	
UE-U42587	6"	
UE-U42588	8"	



Welded Male & Female Band-lok Dig Tubes

Manufacturer Number	Size	Westvac Number	Stocking WHS
Female Bandlock			
S8500-00455FCHE	6X60		
S8500-00455AFHE	6X72	UE-S8500-00455AFHE	
S8500-00455FBHE	6X84		
S8510-01374AFHE	8X72		
Male Bandlock			
	4X72		
WMBH4X84	4X84		
WMBH4S120	4X120		
S8500-00455AHE	6X72	UE-S85000455AHE	
S8500-00455BHE	6X84	UE-S85000455BHE	
S8500-00455FHE	6X120		
S8510-01374AHE	8X72	UE-S851001374AHE	
S8510-00453GGHE	8X84		



Part Number	Size	WHS
UE-S3500-00003A	4" SQR	
UE-S3500-0002A	6" SQR	
UE-S3500-00001A	8" SQR	
UE-S3500-00003S	4" RND	
UE-S3500-00002S	6" RND	
UE-S3500-00003S	8" RND	



Replacement Dig Tube Boot

Part Number	Size	WHS
USLV4X8	4"	
USLV6X8	6"	
USLV8X8	8"	
USLV-HARDWARE	Bolt Kit	



Dig Tube Handle

Manufacturer Number	Size	Westvac Number	Stocking WHS
U63404	6"	UE-U63404	
U25262	8"	UE-U25262	

Replacement Dig Tube Crown



Part Number	Size	WHS
UA3CRWN	3"	
UA3CRWN	4"	
UE-UA34767	6"	
UE-UA23788	8"	



Aftermarket Dig Tube Boot

Manufacturer Number	Size	Stocking WHS
WV-0069	6"	
WV-0089	8"	
USLV-HARDWARE	Bolt Kit	

Band-Lok® / Ring Lock Style Dig Tube Extension



Tuff Tube seamless tubing has a wall thickness of .100", which is .010" thicker than any other 6" & 8" aluminum tube in the industrial sewer and vacuum market. Tuff Tube is also heat-treated. Thus, over-time, it becomes work-hardened, which in-turn prolongs its career in the field.

Manufacturer Number	Size	Westvac Number	Stocking WHS
S8510-00285	6X24	N/A	
S8510-01147	6X36		
S8510-00286	6X48		
S8510-01148	6X60	UE-S851001148	
S8510-01148A	6X72	UE-S851001148A	
S8510-01371	6X84	UE-S851001371	
S8510-00287	6X96	UE-S851000287	
S8510-00285A	6X120		
S8510-00288	8X24	UE-S851000288	
S8510-01373	8X36	UE-S851001373	
S8510-00289	8X48	UE-S851000289	
S8510-01374	8X60	UE-S8510-1374	
S8510-01374A	8X72	UE-S851001374A	
S8510-01375	8X84	UE-S8510-1375	
S8510-00290	8X96		
S8510-01376	8X120		



Part Number	Size	WHS
UE-U42586	4"	
WV-RLC5	5"	
UE-U42587	6"	
UE-U42588	8"	



Part Number	Size	WHS
UE-S3500-00003A	4" SQR	
UE-S3500-0002A	6" SQR	
UE-S3500-00001A	8" SQR	
UE-S3500-00003S	4" RND	
UE-S3500-00002S	6" RND	
UE-S3500-00003S	8" RND	



Band-Lok® to Camlock Adapter

Part Number	Size	WHS
WV-6MBX4MC	6X4	
WV-8MBX4MC	8X4	



Band-Lok® to Camlock Adapter

Part Number	Size	WHS
WV-6MBX6MC	6X6	
WV-8MBX6MC	8X6	



Steel Male Hose End Band-Lok Style

Manufacturer Number	Size	Westvac Number	Stocking WHS
U42583B	3"		
U42583	4"		
U42584	6"	UE-U42584	
U42585	8"	UE-U42585	



Steel Female Hose End Band-Lok Style

Manufacturer Number	Size	Westvac Number	Stocking WHS
U42580A	3"		
U42580	4"		
U42581	6"	UE-U42581	
U42582	8"	UE-U42582	



Male to Female Reducing Adapter Band-Lok Style

Manufacturer Number	Size	Westvac Number	Stocking WHS
S3000-01294	6" MALE X 4" FEMALE		
S3000-00929	8" MALE X 6" FEMALE	UE-S3000-00929	
S3000-00929B	8" FEMALE X 6" MALE	UE-S3000-00929B	
S8500-03149	8" FEMALE X 8" HOSE BARB		



Aluminum Male & Female Band-Lok Style Weldable Fittings

S3000-00783-4	4" Male		
S3000-00781	6" Male	UE-S3000-00781	
S3000-00783	8" Male	UE-S3000-00783	
S3000-00784-4	4" Female		
S3000-00782A	6" Female	UE-S3000-00782A	
S3000-00784A	8" Female	UE-S3000-00784A	



Male to Female Steel 45 Degree Reducing Adapter Band-Lok Style

Manufacturer Number	Size	Westvac Number	Stocking WHS
U53494	6"		
U53490	8"	UE-U53490	



Aluminum Male & Female Hose End Band-Lok Style

Manufacturer Number	Size	Westvac Number	Stocking WHS
S8500-03149	8" Female Bandlock x 8" Barb	UE-S8500-03149	
S8500-03150	6" Female Bandlock x 6" Barb		
S8500-02868	8" Male Bandlock x 8" Barb	UE-S8500-02868	
S8500-02869	6" Male Bandlock x 6" Barb		

Flat Flange Dig Tubes



Manufacturer Number	Size	Westvac Number	Stocking WHS
UA34763DHE	6X36		
UA34763CHE	6X48		
UA34763AHE	6X60	UE-UA34763AHE	
UA34763AAHE	6X72	UE-UA34763AAHE	
UA34763RHE	6X78		
UA34763KHE	6X84	UE-UA34763KHE	
UA34763EHE	6X90	UE-UA34763EHE	
UA34763FHE	6X120		
UA25637CHE	8X36		
UA25637WHE	8X66		
UA25637DHE	8X72	UE-UA25637DHE	
UA25637RHE	8X78		
UA25637EHE	8X84		
UA25637AHE	8X96		
UA25637GHE	8X120		
UA34763AAHE-8	8-6X72	UE-UA34763AAHE-8	
UA34763KHE-8	8-6X84		
UA34763GHE-8	8-6X96		
EZ86120HX	8-6X120		
EZ86R460HX	8-4X60		



Dig Tube Handle



Manufacturer Number	Size	Westvac Number	Stocking WHS
U63404	6"	UE-U63404	
U25262	8"	UE-U25262	



Part Number	Size	WHS
UE-U32087A	6"	
UE-V6800015H	8"	



Part Number	Size	WHS
UE-U32087	6"	
UE-V6800015	8"	



Part Number	Size	WHS
UE-U16584	8"	

Replacement Dig Tube Crown



Part Number	Size	WHS
UA3CRWN	3"	
UA3CRWN	4"	
UE-UA34767	6"	
UE-UA23788	8"	

Replacement Dig Tube Boot



Part Number	Size	WHS
USLV4X8	4"	
USLV6X8	6"	
USLV8X8	8"	



Aftermarket Dig Tube Boot

Manufacturer Number	Size	Stocking WHS
WV-0069	6"	
WV-0089	8"	
USLV-HARDWARE	Bolt Kit	



Dig Tube Gasket

Part Number	Size	WHS
UE-U16585A	6"	
UEMG16585-4	8"	
UEMG16585-8	8"	

Flat Flange Catch Basin Dig Tubes



Manufacturer Number	Size	Westvac Number	Stocking WHS
UA34766	6x24		
UA34766D	6x30		
UA34766H	6x36		
UA34766C	6x48		
UA34766J	6x60		
UA34766A	6x72		
UA34766B	6x78		
UA34766G	6x90		
UA34766F	6x96		
UA34766K	6x120		
UA25268Q	8x24		
UA25268A	8x32		
UA25268G	8x36		
UA25268F	8x42		
UA25268H	8x48		
UA25268C	8x60	UE-UA25268C	
UA25268I	8x66		
UA25268D	8x72		
UA25268	8x78		
UA25268M	8x80		
UA34766C-8	8-6x48		
UA34766J-8	8-6x60		
UA34766AA-8	8-6x72		
UA34766B-8	8-6x78		
UA34766E-8	8-6x84		
UA34766G-8	8-6x90		
UA34766F-8	8-6x96		
UA34766NA-8	8-6x108		
UA34766K-8	8-6x120		
FL8-4CBX60	8-4X60		
FL8-4CBX72	8-4X70		

FLAT FLANGE DIG TUBES - INTAKE TUBES W/ WELDED FLANGES



Manufacturer Number	Size	Westvac Number	Stocking WHS
UA34763D-1F	6X36		
UA34763A-1F	6X60		
UA34763AA-1F	6X72	UE-UA34763AA-1F	
UA34763F-1F	6X80		
UA34763K-1F	6X84		
UA34763E-1F	6X96		
UA25637C-1F	8X36		
UA25637M-1F	8X48		
UA25637-1F	8X60		
UA25637D-1F	8X72		
UA25637R-1F	8X78		
UA25637U-1F	8X80		
UA25637E-1F	8X84		
UA25637A-1F	8X96		
UA25637G-1F	8X120		



Manufacturer Number	Size	Westvac Number	Stocking WHS
UA34763L	6X24		
UA34763H	6X28		
UA34763D	6X36	UE-UA34763D	
UA34763C	6X48	UE-UA34763C	
UA-34763A	6X60	UE-UA34763A	
UA-34763AA	6X72	UE-UA34763AA	
UA34763K	6X84	UE-UA34763K	
UA34763E	6X90		
UA34763G	6X96	UE-UA34763G	
UA34763F	6X120		
UA25637N	8X12		
UA25637T	8X18		
UA25637Q	8X24		
UA25637K	8X28		
UA25637B	8X30		
UA25637C	8X36		
UA25637M	8X48		
UA25637	8X60	UE-UA25637	
UA25637J	8X70		
UA25637D	8X72	UE-UA25637D	
UA25637R	8X78		
UA25637U	8X80		
UA25637P	8X82		
UA25637E	8X84	UE-UA25637E	
UA25637E	8X90		
UA25637F	8X96		
UA25637A	8X96	UE-UA25637A	
UA25637V	8X102		
UA25637G	8X120		



Flat Flange to Camlock Adapter

Part Number	Size	WHS
WV-6FX4MC	6X4	
WV-8FX4MC	8X4	



Flat Flange to Camlock Adapter

Part Number	Size	WHS
WV-8FX6MC	8X6	



Part Number	Size	WHS
UE-U16584	8"	



Part Number	Size	WHS
UE-U16585A	6"	
UEMG16585-4	8"	
UEMG16585-8	8"	



Part Number	Size	WHS
UE-U32087	6"	
UE-V6800015	8"	



Part Number	Size	WHS
UE-U32087A	6"	
UE-V6800015H	8"	

Tuff Tube® seamless tubing has a wall thickness of .100", which is .010" thicker than any other 6" & 8" aluminum tube in the industrial sewer and vacuum market. Tuff Tube® is also heat-treated. Thus, over-time, it becomes work-hardened, which in-turn prolongs its career in the field.



Flat Flange Steel Hose End

Manufacturer		Westvac	
Number	Size	Number	WHS
U53348	6"	UE-U53348	
AS510855A	7"		
U58795	8" 1/8	UE-U58795	
U58795H	8" 1/4		
U58795EH	8" 3/8	UE-U58795EH	



Heavy Duty Steel Slotted Flange Barbed Hose End

Manufacturer		Westvac	
Number	Size	Number	WHS
GFS4X4HS	4"		
GFS6X6HS	6"	WV-GFS6X6HS	
GFS8X8HS	8"	WV-GFS8X8HS	



Flat Flange Reducer Plate

Manufacturer		Westvac	
Number	Size	Number	WHS
U34615	8" TO 6"	UE-U34615	



Steel Transition Reducer Flat Flange Style

Manufacturer		Westvac	
Number	Size	Number	WHS
U35096	8" TO 6"	UE-U35096	
U35096A	10" TO 8"	UE-U35096A	



Pipe Flange

Manufacturer			
Number	Size/Description	Westvac Number	WHS
U20735	4 1/8 Plain Pipe Flange	UE-U20735	
U14915	5 1/8 Plain Pipe Flange		
U43413	6" Slotted Hole-Pipe Flange	UE-U43413	
U15338	6 1/8 Punched-Hole Pipe Flange	UE-U15338	
U15338C	6 1/8 Rivet Drilled-Hole Pipe Flange		
U40011	8" Rivet Drilled-Hole Pipe Flange		
U43414	8" Punched-Hole Pipe Flange	UE-U43414	
U10749A	8 1/8" Punched-Hole Pipe Flange		
U10749B-SPA	8" Plain Pipe Flange	UE-U10749B-SPA	
U10749A-SPS	8" 1/8 Slotted Hole Pipe Flange	UE-U10749A-SPS	

Flat Flange Transition Reducer

Manufacturer		Westvac	
Number	Size	Number	WHS
U34614	6" TO 4"	UE-U34614	



Aluminum Flat Flange Weldable Fitting

Manufacturer		Westvac	
Number	Size	Number	WHS
U40011D	4"		
U40011B	6"	UE-U40011B	
U40011A	8"	UE-U40011A	



8" Flange to 6" Dig Tube Reducer Weldable Fitting

Manufacturer		Westvac	
Number	Size	Number	WHS
U40011C	8" TO 6" PIPE	UE-U40011C	



Vector Style Catch Basin Tubes w/ Riveted Steel Flanges

Manufacturer Number	Size	Westvac Number	Stocking WHS
U34766-1	6X18		
U34766N	6X30		
U34766M	6X36		
U34766B	6X48		
U34766A	6X60		
U34766	6X78		
U34766E	6X84		
U34766G	6X90		
U34766F	6X96		
U34766D	6X120		
U25268A	8X32		
U25268G	8X36		
U25268F	8X42		
U25268H	8X48		
U25268C	8X60		
U25268M	8X72	UE-U25268M	
U25268	8X78		
U25268D	8X82		
U25268B	8X84		
U25268E	8X90		
U25268J	8X96		
U25268K	8X108		
U25268L	8X120		



Band-lok Male Catch Basin Tubes

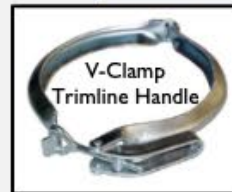
Manufacturer Number	Size	Westvac Number	Stocking WHS
S8500-00454	6X24		
S8500-00455	6X36		
S8510-00287D	6X48		
S8510-00287B	6X60	UE-S8510-0287B	
S8500-00455A	6X72		
S8510-00287AA	6X78		
S8510-00287A	6X96		
S8500-00453	8X24		
S8500-00453AM	8X30		
S8500-00453BM	8X36		
S8500-00453D	8X48		
S8500-00453E	8X60		
S8500-00453F	8X72		
S8500-00453J	8X78		
S8500-00453GG	8X84		
S8500-00453H	8X96		



Part Number	Size	WHS
UE-U16585A	6"	
UEMG16585-4	8"	
UEMG16585-8	8"	



Part Number	Size	WHS
UE-U32087	6"	
UE-V6800015	8"	



Part Number	Size	WHS
UE-U16584	8"	



Part Number	Size	WHS
UE-U42586	4"	
UE-U42587	6"	
UE-U42588	8"	



Part Number	Size	WHS
UE-S3500-00003A	4" SQR	
UE-S3500-0002A	6" SQR	
UE-S3500-00001A	8" SQR	
UE-S3500-00003S	4" RND	
UE-S3500-00002S	6" RND	
UE-S3500-00003S	8" RND	

High-Density Polyethylene Dig Tubes & Extensions

Flat Flange Dig Tube



Part Number	Size	WHS
WV-HTEC6X6DT	6" X 6Ft	
WV-HTEC8X6DT	8" X 6Ft	

Reducing Dig Tube



Part Number	Size	WHS
WV-HTEC6X4REDDT	6"-4"X6Ft	
WV-HTEC8X6REDDT	8"-6"X6Ft	

Dig Tube Extension



Part Number	Size	WHS
WV-HTEC6X6EX	6" X 6Ft	
WV-HTEC8X6EX	8" X 6Ft	

Irrigation Dig Tube



Part Number	Size	WHS
WV-HTEC6X6HL	6" X 6Ft	
WV-HTEC8X6HL	8" X 6Ft	

Reducing Irrigation Dig Tube



Part Number	Size	WHS
WV-HTEC6X4REDHL	6"-4"X 6Ft	
WV-HTEC8X6REDHL	8"-6"X 6Ft	

Irrigation Dig Tube Extension



Part Number	Size	WHS
WV-HTEC6X6HLEX	6" X 6Ft	
WV-HTEC8X6HLEX	8" X 6Ft	



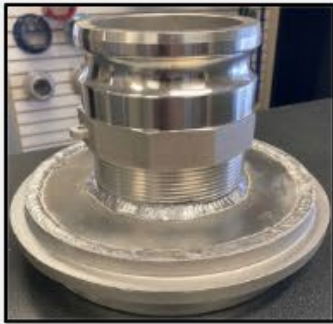
Part Number	Size	WHS
WV-HTEC-1340	6"	
WV-HTEC-1350	8"	
WV-HTEC-9999	Bolt Kit	



Part Number	Size	WHS
UE-U16585A	6"	
UEMG16585-4	8"	
UEMG16585-8	8"	



Part Number	Size	WHS
WV-HTEC-6RUBBER	6"	
WV-HTEC-8RUBBER	8"	



BAND-LOK TO **MALE** CAMLOCK ADAPTERS

Westvac Number	Description	STOCKING WHS
WV-6MBX4MC	6" Male Band-lok x 4" Male Camlock	
WV-6MBX6MC	6" Male Band-lok x 6" Male Camlock	
WV-8MBX4MC	8" Male Band-lok x 4" Male Camlock	
WV-8MBX6MC	8" Male Band-lok x 6" Male Camlock	

FLAT FLANGE TO **MALE** BAND-LOK ADAPTERS

Westvac Number	Description	STOCKING WHS
WV-6FX6MB	6" Flat Flange x 6" Male Band-lok	
WV-6FX8MB	6" Flat Flange x 8" Male Band-lok	
WV-8FX6MB	8" Flat Flange x 6" Male Band-lok	
WV-8FX8MB	8" Flat Flange x 8" Male Band-lok	



FLAT FLANGE TO **MALE** CAMLOCK ADAPTERS

Westvac Number	Description	STOCKING WHS
WV-6FX4MC	6" Flat Flange x 4" Male Camlock	
WV-8FX4MC	8" Flat Flange x 4" Male Camlock	
WV-8FX6MC	8" Flat Flange x 6" Male Camlock	

FLAT FLANGE TO **FEMALE** BAND-LOK ADAPTERS

Westvac Number	Description	STOCKING WHS
WV-6FX6FB	6" Flat Flange x 6" Female Band-Lok	
WV-8FX6FB	8" Flat Flange x 6" Female Band-Lok	
WV-8FX8FB	8" Flat Flange x 8" Female Band-Lok	



Westvac Number	Description	STOCKING WHS
WV-8FX6F	8" Flat Flange x 6" Flat Flange	

Note: Other configurations available upon request

Gum Rubber Boom Hose

Mandrel built bulk material suction and delivery hose suitable for abrasive materials, slurries, sand, plastic granulate and mobile drilling rigs with corrugated surface to reach maximum required flexibility

Tube:

Red NR smooth rubber with 1/4" thick and high abrasion resistant

Reinforcement:

High tensile textile plies, helix wire embedded, antistatic wire



Cover:

Black, corrugated rubber, weather and abrasion resistant

Application:

Heavy duty bulk material suction and discharge hose, with corrugated cover. Full vacuum for Vac-Truck boom applications, available with cuff ends.

Temperature:

-40°F/+212°F (-40°C /+100C)

Manufacturer Number	VAC Size	MIN Hg	MIN B.R.	WORK LBS / FT	BURST PRESS	WORK PRESS	Westvac Number	Stocking WHS
IVRG-200-250	2"	29	4	1	150 PSI	450 PSI		
IVRG-250-250	2.5"	29	5	1.4	150 PSI	450 PSI		
IVRG-300-250	3"	29	6	1.8	150 PSI	450 PSI		
IVRG-350-250	3.5"	29	7	2	150 PSI	450 PSI		
IVRG-400-250	4"	29	8	2.3	150 PSI	450 PSI		
IVRG-500-250	5"	29	10	3	150 PSI	450 PSI		
IVRG-600-250	6"	29	12	3.97	150 PSI	450 PSI	WV-IVRG-600-600	
IVRG-800-250	8"	29	16	6.63	150 PSI	450 PSI	WV-IVRG-800-800	

King Clamps



King Clamps can be used on all vac trucks with cuffed rubber debris hose to hold to steel weldments. The best clamp-to-hose contact circle in the industry

Manufacturer Number	Size/Description	Westvac Number	Stocking WHS
U42592	4" KING CLAMP		
U42593	6" KING CLAMP	UE-U42593	
U42594	8" KING CLAMP	UE-U42594	

BR180 Hose

Light weight and flexible with extreme abrasion resistance

Application:

Heavy duty abrasion hose for vacuum trucks and suction cement, sand, crushed rocks, gravels, grains and fertilizer.

Tube:

Black smooth abrasion resistance SBR blended rubber with static carbon black

Reinforcement:

Rigid PVC clockwise helix

Cover:

Corrugated black SBR rubber with UV and abrasion resistance



Manufacturer Number	VAC Size	MIN Hg	MIN B.R.	WORK LBS / FT	WORK PRESS	Westvac Number	Stocking WHS
BR180-200	2"	29.8	2.5	0.50	40		
BR180-300	3"	29.8	3	1.10	35		
BR180-400	4"	29.8	4	1.77	30		
BR180-600	6"	28	8	3.08	30	WV-180AR600	
BR180-800	8"	27	12	5.65	30		
BR180-100	10"	25	20	8.88	28		

Spiral Clamps

RIGHT HAND WINDING



Manufacturer Number	Size/Description	Westvac Number	Stocking WHS
U43784	2" SPRIAL CLAMP		
U44215	2.5 SPRIAL CLAMP		
U70846	3" SPRIAL CLAMP		
U43389	4" SPRIAL CLAMP	UE-U43389	
U43415	6" SPRIAL CLAMP	UE-U43415	
U43388	8" SPRIAL CLAMP	UE-U43388	
U45739	10" SPRIAL CLAMP		
U45606	12" SPRIAL CLAMP		

EPDM Water Suction & Discharge Hose

Application:

Heavy duty EPDM liquid suction hose for industrial and agricultural water, Cesspool cleaning, slurry and sludge handling, light chemical, dry material and marine use



Tube:

Black smooth EPDM rubber

Reinforcement:

High polymerization helix

Cover:

Green corrugated helix

Temperature:

-40°F/+176°F (-40°C /+80°C)

Manufacturer Number	VAC Size	MIN Hg	MIN B.R.	WORK LBS / FT	WORK PRESS	WORK Westvac Number	Stocking	
							WHS	WHS
PE300-100-LL	1"	29.8	2	0.23	60			
PE300-125-LL	1.25"	29.8	3.3	0.34	60			
PE300-150-LL	1.50"	29.8	3.3	0.40	60			
PE300-200-LL	2"	29.8	5.2	0.66	60	WV-PE300-200LL		
PE300-250-LL	2.5"	29.8	5.5	0.93	50			
PE300-300-LL	3"	29.8	7.1	1.10	44	WV-PE300-300LL		
PE300-400-LL	4"	29.8	11	1.85	38	WV-PE300-400LL		
PE300-500-LL	5"	28	16.5	2.15	28			
PE300-600-LL	6"	28	20	3.07	23			

Part Number Creation for EPDM Hose Asm

PVC Lay-Flat Water Discharge Hose

Application:

Light and economical lay flat hose which is easy to roll up and pack for storage after use. It is suitable for drip irrigation application and no tearing after punching. Produced in a single process inner and outer tube bounded with high tensile yarn reinforcement.

Tube and Cover:

Durable Polyvinyl Chloride PVC material

Reinforcement:

High strength polyester yarn spiral wrap

Temperature:

-5°F/+170°F (-20°C /+76°C)



Manufacturer Number	Size	LBS / FT	WORK		Stocking	
			PRESS	Westvac Number	WHS	WHS
BLFW-100-110-300	1.00"	0.11	110			
BLFW-125-080-300	1.25"	0.13	80			
BLFW-150-080-300	1.50"	0.16	80			
BLFW-200-070-300	2.00"	0.23	70			
BLFW-250-070-300	2.50"	0.29	70			
BLFW-300-065-300	3.00"	0.39	65			
BLFW-400-060-300	4.00"	0.52	60			
BLFW-500-060-300	5.00"	0.68	60			
BLFW-600-060-300	6.00"	0.86	60			
BLFW-800-045-300	8.00"	1.3	45			
BLFW-1000-045-300	10.00"	1.81	45			

Punch Lock Clamps

This is a preformed hose clamp used to quickly and securely attach fittings to hose using a center punch tool. This clamps are made of 302 Stainless Steel and have a 3-1/2" opening. This clamp is 5/8" wide and 0.022" thick. Compatible hose size may vary depending on the thickness of the hose.



Manufacturer Number	Size/Description	Westvac Number	Stocking WHS
PREF-8S	2" STAINLESS	WV-PREF-8S	
PREF-10S	2 1/2" STAINLESS	WV-PREF-10S	
PREF-14S	3 1/2" STAINLESS	WV-PREF-14S	
PREF-16S	4" STAINLESS	WV-PREF-16S	
PREF-20S	5" STAINLESS	WV-PREF-20S	

Water Fill Hose

Manufacturer Number	Size/Description	Westvac Number	Stocking WHS
U20720G	2.5" X 20FT		
U20720A	2.5" X 25FT		
U20720H	2.5" X 30FT		
U20720D	2.5" X 50FT	UE-U20720D	
U20720Z	2.5" X 100FT		



Aluminum Cam-lock
Type A
Female NPT Fitting



Westvac Number	Size	Stocking	
		WHS	
WV-ALCL-A-050	1/2"		
WV-ALCL-A-075	3/4"		
WV-ALCL-A-100	1"		
WV-ALCL-A-125	1 1/4"		
WV-ALCL-A-150	1 1/2"		
WV-ALCL-A-200	2"		
WV-ALCL-A-250	2 1/2"		
WV-ALCL-A-300	3"		
WV-ALCL-A-400	4"		
WV-ALCL-A-500	5"		
WV-ALCL-A-600	6"		
WV-ALCL-A-800	8"		

Aluminum Cam-lock
Type F
Male NPT Fitting



Westvac Number	Size	Stocking	
		WHS	
WV-ALCL-F-050	1/2"		
WV-ALCL-F-075	3/4"		
WV-ALCL-F-100	1"		
WV-ALCL-F-125	1 1/4"		
WV-ALCL-F-150	1 1/2"		
WV-ALCL-F-200	2"		
WV-ALCL-F-250	2 1/2"		
WV-ALCL-F-300	3"		
WV-ALCL-F-400	4"		
WV-ALCL-F-500	5"		
WV-ALCL-F-600	6"		
WV-ALCL-F-800	8"		

Aluminum Cam-lock
Type DP
Dust Plug



Westvac Number	Size	Stocking	
		WHS	
WV-ALCL-DP-050	1/2"		
WV-ALCL-DP-075	3/4"		
WV-ALCL-DP-100	1"		
WV-ALCL-DP-125	1 1/4"		
WV-ALCL-DP-150	1 1/2"		
WV-ALCL-DP-200	2"		
WV-ALCL-DP-250	2 1/2"		
WV-ALCL-DP-300	3"		
WV-ALCL-DP-400	4"		
WV-ALCL-DP-500	5"		
WV-ALCL-DP-600	6"		
WV-ALCL-DP-800	8"		

Aluminum Cam-lock
Type C
Female Hose Shank



Westvac Number	Size	Stocking	
		WHS	
WV-ALCL-C-050	1/2"		
WV-ALCL-C-075	3/4"		
WV-ALCL-C-100	1"		
WV-ALCL-C-125	1 1/4"		
WV-ALCL-C-150	1 1/2"		
WV-ALCL-C-200	2"		
WV-ALCL-C-250	2 1/2"		
WV-ALCL-C-300	3"		
WV-ALCL-C-400	4"		
WV-ALCL-C-500	5"		
WV-ALCL-C-600	6"		
WV-ALCL-C-800	8"		

Aluminum Cam-lock
Type D
Female NPT Fitting



Westvac Number	Size	Stocking	
		WHS	
WV-ALCL-D-050	1/2"		
WV-ALCL-D-075	3/4"		
WV-ALCL-D-100	1"		
WV-ALCL-D-125	1 1/4"		
WV-ALCL-D-150	1 1/2"		
WV-ALCL-D-200	2"		
WV-ALCL-D-250	2 1/2"		
WV-ALCL-D-300	3"		
WV-ALCL-D-400	4"		
WV-ALCL-D-500	5"		
WV-ALCL-D-600	6"		
WV-ALCL-D-800	8"		

Aluminum Cam-lock
Type B
Male NPT Fitting



Westvac Number	Size	Stocking	
		WHS	
WV-ALCL-B-050	1/2"		
WV-ALCL-B-075	3/4"		
WV-ALCL-B-100	1"		
WV-ALCL-B-125	1 1/4"		
WV-ALCL-B-150	1 1/2"		
WV-ALCL-B-200	2"		
WV-ALCL-B-250	2 1/2"		
WV-ALCL-B-300	3"		
WV-ALCL-B-400	4"		
WV-ALCL-B-500	5"		
WV-ALCL-B-600	6"		
WV-ALCL-B-800	8"		

Aluminum Cam-lock
Type DC
Dust Cap



Westvac Number	Size	Stocking	
		WHS	
WV-ALCL-DC-050	1/2"		
WV-ALCL-DC-075	3/4"		
WV-ALCL-DC-100	1"		
WV-ALCL-DC-125	1 1/4"		
WV-ALCL-DC-150	1 1/2"		
WV-ALCL-DC-200	2"		
WV-ALCL-DC-250	2 1/2"		
WV-ALCL-DC-300	3"		
WV-ALCL-DC-400	4"		
WV-ALCL-DC-500	5"		
WV-ALCL-DC-600	6"		
WV-ALCL-DC-800	8"		

Aluminum Cam-lock
Type E
Male Hose Shank



Westvac Number	Size	Stocking	
		WHS	
WV-ALCL-E-050	1/2"		
WV-ALCL-E-075	3/4"		
WV-ALCL-E-100	1"		
WV-ALCL-E-125	1 1/4"		
WV-ALCL-E-150	1 1/2"		
WV-ALCL-E-200	2"		
WV-ALCL-E-250	2 1/2"		
WV-ALCL-E-300	3"		
WV-ALCL-E-400	4"		
WV-ALCL-E-500	5"		
WV-ALCL-E-600	6"		
WV-ALCL-E-800	8"		

Aluminum Cam-lock
Type A Jump Sizes
 Female NPT Fitting



Westvac Number	Cam		Stocking WHS
	Size	Thread	
WV-ALCL-A-150-200	1 1/2	2	
WV-ALCL-A-200-150	2	1 1/2	
WV-ALCL-A-200-250	2	2 1/2	
WV-ALCL-A-200-300	2	3	
WV-ALCL-A-250-200	2 1/2	2	
WV-ALCL-A-250-300	2 1/2	3	
WV-ALCL-A-250-400	2 1/2	4	
WV-ALCL-A-300-200	3	2	
WV-ALCL-A-300-400	3	4	
WV-ALCL-A-400-250	4	2 1/2	
WV-ALCL-A-400-300	4	3	
WV-ALCL-A-400-500	4	5	
WV-ALCL-A-400-600	4	6	
WV-ALCL-A-500-300	5	3	
WV-ALCL-A-600-400	6	4	

Aluminum Cam-lock
Type B Jump Sizes
 Female NPT Fitting



Westvac Number	Cam		Stocking WHS
	Size	Thread	
WV-ALCL-B-100-200	1	2	
WV-ALCL-B-150-100	1 1/2	1	
WV-ALCL-B-200-250	2	1 1/2	
WV-ALCL-B-200-300	2	3	
WV-ALCL-B-250-200	2 1/2	2	
WV-ALCL-B-250-300	2 1/2	3	
WV-ALCL-B-300-200	3	2	
WV-ALCL-B-300-250	3	2 1/2	
WV-ALCL-B-300-400	3	4	
WV-ALCL-B-400-200	4	2	
WV-ALCL-B-400-300	4	3	

Aluminum Cam-lock
Type F Jump Sizes
 Male NPT Fitting



Westvac Number	Cam		Stocking WHS
	Size	Thread	
WV-ALCL-F-100-200	1	2	
WV-ALCL-F-150-200	1 1/2	2	
WV-ALCL-F-200-150	2	1 1/2	
WV-ALCL-F-200-250	2	2 1/2	
WV-ALCL-F-200-300	2	3	
WV-ALCL-F-250-300	2 1/2	3	
WV-ALCL-F-300-150	3	1 1/2	
WV-ALCL-F-300-200	3	2	
WV-ALCL-F-300-250	3	2 1/2	
WV-ALCL-F-300-400	3	4	
WV-ALCL-F-400-200	4	2	
WV-ALCL-F-400-250	4	2 1/2	
WV-ALCL-F-400-300	4	3	
WV-ALCL-F-400-600	4	6	

Aluminum Cam-lock
Type D Jump Sizes
 Male NPT Fitting



Westvac Number	Cam		Stocking WHS
	Size	Thread	
WV-ALCL-D-150-100	1 1/2	1	
WV-ALCL-D-200-150	2	1 1/2	
WV-ALCL-D-250-200	2 1/2	2	
WV-ALCL-D-300-200	3	2	
WV-ALCL-D-300-250	3	2 1/2	
WV-ALCL-D-400-300	4	3	
WV-ALCL-D-600-400	6	4	

Aluminum Cam-lock
Type E Jump Sizes
 Hose Shank Adapter



Westvac Number	Cam		Stocking WHS
	Size	Hose	
WV-ALCL-E-200-150	2	1 1/2	
WV-ALCL-E-200-300	2	3	
WV-ALCL-E-300-200	3	2	
WV-ALCL-E-300-250	3	2 1/2	
WV-ALCL-E-300-400	3	4	
WV-ALCL-E-400-200	4	2	
WV-ALCL-E-400-300	4	3	

Aluminum Cam-lock
Type C Jump Sizes
 Hose Shank Coupler



Westvac Number	Cam		Stocking WHS
	Size	Hose	
WV-ALCL-C-150-100	1 1/2	1	
WV-ALCL-C-150-200	1 1/2	2	
WV-ALCL-C-200-150	2	1 1/2	
WV-ALCL-C-200-250	2	2 1/2	
WV-ALCL-C-250-200	2 1/2	2	
WV-ALCL-C-300-200	3	2	
WV-ALCL-C-300-250	3	2 1/2	
WV-ALCL-C-300-400	3	4	
WV-ALCL-C-400-200	4	2	
WV-ALCL-C-400-300	4	3	

**Aluminum Cam-lock
Type CA**
Male/Female Reducer
Adapter



Westvac Number	Size	Size	Stocking WHS
WV-ALCL-CA-100-150	1	1 1/2	
WV-ALCL-CA-150-100	1 1/2	1	
WV-ALCL-CA-150-200	1 1/2	2	
WV-ALCL-CA-200-100	2	1	
WV-ALCL-CA-200-150	2	1 1/2	
WV-ALCL-CA-200-250	2	2 1/2	
WV-ALCL-CA-200-300	2	3	
WV-ALCL-CA-200-400	2	4	
WV-ALCL-CA-250-200	2 1/2	2	
WV-ALCL-CA-250-400	2 1/2	4	
WV-ALCL-CA-300-150	3	1 1/2	
WV-ALCL-CA-300-200	3	2	
WV-ALCL-CA-300-250	3	2 1/2	
WV-ALCL-CA-300-400	3	4	
WV-ALCL-CA-300-600	3	6	
WV-ALCL-CA-400-200	4	2	
WV-ALCL-CA-400-250	4	2 1/2	
WV-ALCL-CA-400-300	4	3	
WV-ALCL-CA-400-500	4	5	
WV-ALCL-CA-400-600	4	6	
WV-ALCL-CA-500-300	5	3	
WV-ALCL-CA-500-400	5	4	
WV-ALCL-CA-500-600	5	6	
WV-ALCL-CA-600-300	6	3	
WV-ALCL-CA-600-400	6	4	
WV-ALCL-CA-600-500	6	5	
WV-ALCL-CA-800-600	8	6	

**Aluminum Cam-lock
Type AA**
Double Male Adapter



Westvac Number	Size	Size	Stocking WHS
WV-ALCL-AA-100-100	1	1	
WV-ALCL-AA-125-125	1 1/4	1 1/4	
WV-ALCL-AA-150-150	1 1/2	1 1/2	
WV-ALCL-AA-150-200	1 1/2	2	
WV-ALCL-AA-200-200	2	2	
WV-ALCL-AA-200-250	2	2 1/2	
WV-ALCL-AA-200-300	2	3	
WV-ALCL-AA-200-400	2	4	
WV-ALCL-AA-250-250	2 1/2	2 1/2	
WV-ALCL-AA-250-300	2 1/2	3	
WV-ALCL-AA-300-150	3	1 1/2	
WV-ALCL-AA-300-300	3	3	
WV-ALCL-AA-300-400	3	4	
WV-ALCL-AA-400-400	4	4	
WV-ALCL-AA-400-500	4	5	
WV-ALCL-AA-400-600	4	6	
WV-ALCL-AA-500-500	5	5	
WV-ALCL-AA-600-600	6	6	

**Aluminum Cam-lock
Type CA45**
Male/Female 45 Degree
Elbow



Westvac Number	Size	Size	Stocking WHS
WV-ALCL-CA45-200-200	2	2	
WV-ALCL-CA45-300-300	3	3	
WV-ALCL-CA45-400-400	4	4	
WV-ALCL-CA45-600-600	6	6	

**Aluminum Cam-lock
Type DD**
Double Female Coupler



Westvac Number	Size	Size	Stocking WHS
WV-ALCL-DD-100-100	1.5	1.5	
WV-ALCL-DD-125-125	2	2	
WV-ALCL-DD-150-150	2	3	
WV-ALCL-DD-150-200	3	2.5	
WV-ALCL-DD-200-200	3	3	
WV-ALCL-DD-200-250	3	4	
WV-ALCL-DD-200-300	4	4	
WV-ALCL-DD-200-400	4	5	
WV-ALCL-DD-250-250	4	6	
WV-ALCL-DD-250-300	5	5	
WV-ALCL-DD-300-150	6	6	

**Aluminum Cam-lock
Type CA90**
Male/Female 90 Degree
Elbow



Westvac Number	Size	Size	Stocking WHS
WV-ALCL-CA90-100-100	1 1/2	1 1/2	
WV-ALCL-CA90-200-200	2	2	
WV-ALCL-CA90-300-300	3	3	
WV-ALCL-CA90-400-400	4	4	
WV-ALCL-CA90-600-600	6	6	

Single Wire Pressure Washer Hose Asm (Black Cover)

Temperature:

-40°F/+212°F (-40°C /+100°C)Max operating temp. +257°F (+125°C)Air max+160°F (+70°C)Operating temp. in excess of +212°F (+100°C)May materially reduce the life of the hose.ambient-40°F/+175°F (-40°C /+80°C)

Application:

Medium pressure service per table below with high temperature of water. oil, fuel, weather, ozone and abrasion resistant.

Tube:

Synthetic rubber black tube



Reinforcement:

Single high tensile steel wire compact braid reinforcement

Cover:

Synthetic rubber black or gray outer cover

Manufacturer Number	Size	ID	OD	WORK PRESS	BURST PRESS	MIN BEND	Westvac Number	Stocking WHS
PWB1-025-50	1/4X50	0.25	0.48	5000	15000	2in		
PWB1-025-75	1/4X75	0.25	0.48	5000	15000	2in		
PWB1-025-100	1/4X100	0.25	0.48	5000	15000	2in		
PWB1-0375-50	3/8X50	0.375	0.63	4000	12500	2.5in	WV-PWB1-0375-50	
PWB1-0375-75	3/8X75	0.375	0.63	4000	12500	2.5in		
PWB1-0375-100	3/8X100	0.375	0.63	4000	12500	2.5in	WV-PWB1-0375-100	
PWB1-050-50	1/2X50	0.50	0.75	3000	10000	3.5in	WV-PWB1-050-50	
PWB1-050-75	1/2X75	0.50	0.75	3000	10000	3.5in		
PWB1-050-100	1/2X100	0.50	0.75	3000	10000	3.5in	WV-PWB1-050-100	

Double Wire Pressure Washer Hose Asm (Black Cover)

Temperature:

-40°F/+212°F (-40°C /+100°C)Max operating temp. +257°F (+125°C)Air max+160°F (+70°C)Operating temp. in excess of +212°F (+100°C)May materially reduce the life of the hose.ambient-40°F/+175°F (-40°C /+80°C)

Application:

Medium pressure service per table below with high temperature of water. oil, fuel, weather, ozone and abrasion resistant.

Tube:

Synthetic rubber black tube



Reinforcement:

Two high tensile steel wire compact braid reinforcement

Cover:

Synthetic rubber black or gray outer cover

Manufacturer Number	Size	ID	OD	WORK PRESS	BURST PRESS	MIN BEND	Westvac Number	Stocking WHS
PWB2-025-50	1/4X50	0.25	0.48	7000	24000	2in		
PWB2-025-75	1/4X75	0.25	0.48	7000	24000	2in		
PWB2-025-100	1/4X100	0.25	0.48	7000	24000	2in		
PWB2-0375-50	3/8X50	0.375	0.63	6000	20000	2.5in		
PWB2-0375-75	3/8X75	0.375	0.63	6000	20000	2.5in		
PWB2-0375-100	3/8X100	0.375	0.63	6000	20000	2.5in		
PWB2-050-50	1/2X50	0.50	0.75	4500	18000	3.5in		
PWB2-050-75	1/2X75	0.50	0.75	4500	18000	3.5in		
PWB2-050-100	1/2X100	0.50	0.75	4500	18000	3.5in		

Schedule 80 Aluminum Lances



Westvac Number	Size	Stocking WHS
WV-LANCE-80A-3	1/2NPT X 3FT	
WV-LANCE-80A-5	1/2NPT X 5FT	
WV-LANCE-80A-6	1/2NPT X 6FT	
WV-LANCE-80A-8	1/2NPT X 8FT	
WV-LANCE-80A-10	1/2NPT X 10FT	

1/2 Hydro Excavation Lances Handle



Manufacturer Number	Size	Westvac Number	Stocking WHS
200009605	1/2	WV-LANCEHANDLE	

Lance Ball Valve

These ball valves are suitable for pressures up to 6,000 psi water, oil, or gas (at ambient temperature). They feature a 2 piece welded body, locking handle, with 304SS ball and delrin seats, enlarged bottom-loaded blow-out proof stem and FNPT ends. This valve has a vented ball that equalizes pressure between body cavity and the flow stream to prevent seat damage due to thermal cycling.



Manufacturer Number	Size	Westvac Number	Stocking WHS
N10014L-050CS	1/2 Carbon	WV-N10014L-050CS	
N10014L-050SS	1/2 Stainless	WV-N10014L-050SS	



Schedule 40 Black Pipe Lances

Westvac Number	Size	Stocking WHS
WV-LANCE-40S-2	1/2NPT X 2FT	
WV-LANCE-40S-3	1/2NPT X 3FT	
WV-LANCE-40S-4	1/2NPT X 4FT	
WV-LANCE-40S-5	1/2NPT X 5FT	
WV-LANCE-40S-6	1/2NPT X 6FT	
WV-LANCE-40S-7	1/2NPT X 7FT	
WV-LANCE-40S-8	1/2NPT X 8FT	
WV-LANCE-40S-10	1/2NPT X 10FT	



Suttner Spray Guns

Manufacturer Number	Model	Pressure	Temp	Flow			Weight	Westvac Number	Stocking WHS
				Rate	Inlet	Outlet			
403240510	SA-3240	3200PSI	300F	16GPM	1/2FPT	1/2FPT	1.85LB	WV-SA3240	
680-0436		5000 PSI	320F	10.5GPM	1/2FPT	1/2FPT		VC-6800436	
203500550	ST-3500	5000PSI	300F	53GPM	1/2SWV	1/2FPT	2.58LB	WV-ST3500	
203240510	ST-3240	4500PSI	212F	32GPM	1/2FPT	1/2FPT	1.75LB	WV-ST3240	
203600600	ST-3600	8700PSI	300F	21GPM	1/2FPT	1/2FPT	2.58LB		



Unloader Valves

Manufacturer Number	Description	Size	Pressure		Flow		Stocking	
			PSI	GPM	Westvac Number	WHS		
	w/handle (Blue Spring)	3/8	3650	8	WV-53207			
TPU1040	w/out handle (Blue Spring)	3/8	4050	10.5	SE-24004-00-X			
TPU1040H	w/handle (Blue Spring)	3/8	4050	10.5				
UTP2140R	w/out Handle (Blue Spring)	1/2	4050	21	DY-UTP2140R			
UTP2140HR	w/handle (Blue Spring)	1/2	4050	21				

Water Relief Valves

For regulating washdown gun Pressure



Manufacturer Number	Pressure	Westvac Number	Stocking	
			WHS	
U40029A	300PSI			
U40029	700PSI	UE-U40029		

Unloader Valve Repair Kits For UTP2140R

Manufacturer Number	Westvac Number	WHS
60049824P	DY-60049824P	

Wash Down Gun



It has a on-off trigger lever, which is complimented with a handle support lever to ease control of the water volume exerted via the gun. The G45109 is equipped with an 1/2" NPT male swivel joint for 1/2" washdown hose attachment. A 1/2" FNPT x 1/2" FNPT is also supplied in the event a washdown hose has a male coupler.

Manufacturer Number	Flow	Pressure	Westvac Number	Stocking	
				WHS	
G45109	25 GPM	@850PSI	UE-U45109		

Wash Down Gun



Manufacturer Number	Flow	Pressure	Westvac Number	Stocking	
				WHS	
HTEC1255-20	12 GPM	5000PSI	WV-HTEC1255-20		



Heavy Duty 90 Degree Super Swivels 1/2 SWIVEL REPAIR KIT PART# WV-9922-0200

Manufacturer Number	Size	Pressure	Westvac Number	Stocking	
				WHS	
9927-8551	1/2"	5000PSI	WV-9927-8551		
9928-8551	3/4"	4500PSI			
0898XHD-16-16	1"	4000PSI			

Hose Bumper Stops for Hannay Spring Rewind Reels



Manufacturer Number	Westvac Number	WHS
9922-0200	WV-9922-0200	

Economic Option



Veloci Ball Bearing Water-Blast Couplers



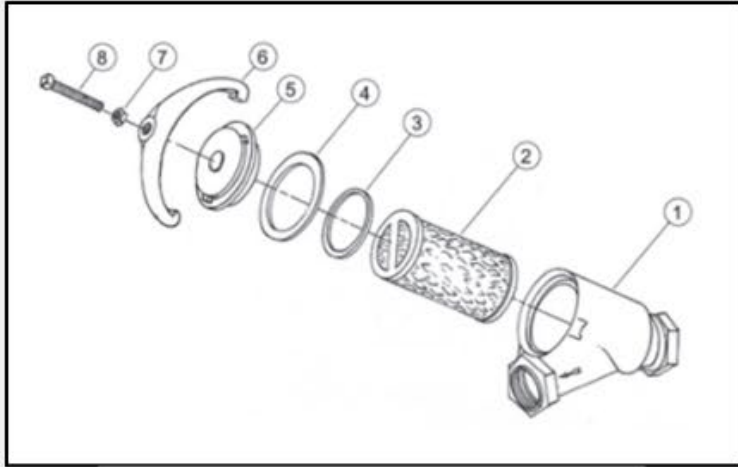
Manufacturer Number	Size	Description	Westvac Number	Stocking	
				WHS	
24.0083	1/2	Male Nipple x Female Thread	WV-24.0083		
24.0065	1/2	Female Coupler x Female Thread	WV-24.0065		

EA Series Water-Blast Couplers



Trouble Free in Extreme Conditions

Manufacturer Number	Size	Description	Westvac Number	Stocking	
				WHS	
EA4F4	1/2	Male Nipple x Female Thread	VC-6210705		
4EAF4	1/2	Female Coupler x Female Thread	VC-6210706		



Y Pattern Strainer Components

Manufacturer			Stocking	
Ref Number	Description	Westvac Number	WHS	
2" Y Strainer				
1	U46134	Body Only	UE-U46134	
2	U45803	Screen Only	UE-U45803	
3	U46137	Basket Screen Gasket	UE-U46137	
4	U46138	Cap Gasket	UE-U46138	
5	U46136	Cap	UE-U46136	
6	U46135	Cap Clamp	UE-U46135	
7	U46140	Jam Nut	UE-U46140	
8	U41274	Screw 1/2 x 13 x 2 3/4	UE-U41274	
3" Y Strainer				
1	U41268	Body Only	UE-U41268	
2	U41280	Screen Only	UE-U41280	
3	U41272	Basket Screen Gasket	UE-U41272	
4	U71271	Cap Gasket	UE-U71271	
5	U41269	Cap	UE-U41269	
6	U41270	Cap Clamp	UE-U41270	
7	U71273	Jam Nut	UE-U71273	
8	U41274	Screw 1/2 x 13 x 2 3/4	UE-U41274	



Y Pattern Strainer Assembly

This Style "Y" filter strainer assembly has been used for many years on Vector Style machines and others. The purpose of these "Y" design strainers are to allow large volumes of water to pass through while filtering sand, rust and other materials from the water before it enters a water pump

Manufacturer			Stocking	
Number	Description	Westvac Number	WHS	
U45797	2"	UE-45797		
U41279	3"	UE-41279		



Ripsaw™ HD Rotating Turbo Nozzle

The Ripsaw HD blasts a 0-degree straight water stream at up to 3200 PSI while rotating at a high speed to provide an 18-degree cone of coverage. The cone-shaped flow pattern is ideally suited for potholing applications.

The upgraded new heavy-duty coating is a special formulation designed for use in extreme environments including frost, shale, and other rocky conditions while protecting users and sensitive underground utilities.

Manufacturer Number	Size	Westvac Number	Stocking WHS	1000 PSI	1500 PSI	2000 PSI	2500 PSI	3000 PSI	3200 PSI
20022380	3.0			1.5	1.8	2.1	2.4	2.6	2.7
20022381	4.0	WV-1002719-040		2.0	2.4	2.8	3.2	3.5	3.6
20022382	5.0			2.5	3.1	3.5	4.0	4.3	4.5
20022383	6.0	WV-1002719-060		3.0	3.7	4.2	4.7	5.2	5.4
20022384	8.0	WV-1002719-080		4.0	4.9	5.7	6.3	6.9	7.2
20022385	10.0	WV-1002719-100		5.0	6.1	7.1	7.9	8.7	8.9
20022386	12.0	WV-1002719-120		6.0	7.3	8.5	9.5	10.4	10.7

RIPSAW Rebuild Kits



Manufacturer Number	Size	Westvac Number	Stocking WHS
20022328	3.0		
20022329	4.0	WV-1001858-030	
20022330	5.0	WV-1001858-040	
20022331	6.0	WV-1001858-060	
20022332	8.0	WV-1001858-080	
20022333	10.0	WV-1001858-100	
20022334	12.0	WV-1001858-120	



Replacement RIPSAW Covers

Part Number	Size	WHS
WV-RVRIPREP	Red	
WV-HTEC1001	Blue HD	

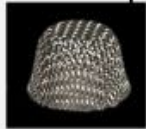


Machete™ Linear Oscillating Nozzle

The Machete™ is a premium oscillating tool and the first of its kind in the hydro-excavation market. By moving water in an oscillating motion combined with a smaller spray angle, the direct stream provides a more forceful flow and impact. It's the perfect nozzle to give you the cutting power and penetration of a straight tip and the movement of a rotating tip. Whether it's trenching or cutting through compact soils, the Machete acts as a finishing tool for any job. By creating a crisp straight edge, while not undermining itself, the Machete provides a safer top surface environment.

Manufacturer Number	Size	Westvac Number	Stocking WHS	1000 PSI	1500 PSI	2000 PSI	2500 PSI	3000 PSI	3200 PSI
20022424	3.0			1.5	1.8	2.1	2.4	2.6	2.7
20022425	4.0			2.0	2.5	2.8	3.2	3.5	3.6
20022426	5.0			2.5	3.0	3.5	4.0	4.3	4.5
20022427	6.0			3.0	3.7	4.2	4.7	5.2	5.4
20022428	8.0	WV-1003088-080		4.0	4.9	5.7	6.3	6.9	7.2
20022429	10.0	WV-1003088-100		5.0	6.1	7.1	7.9	8.7	8.9

RIPSAW & MACHETE Replaceable Screens



Part Number	Size	WHS
1002833	All	

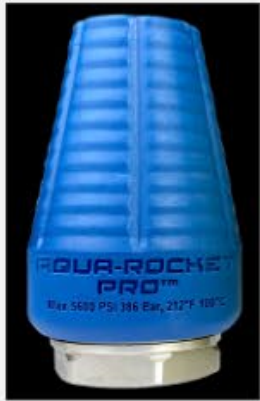
MACHETE Rebuild Kits

Manufacturer Number	Size	Westvac Number	WHS
1003308-030	3.0		
1003308-040	4.0		
1003308-050	5.0		
1003308-060	6.0		
1003308-080	8.0		
1003308-100	10.0		

MACHETE Replaceable Cover



Part Number	Size	WHS
20022299	All	



Aqua-Rocket Pro™ Industrial Turbo Nozzle

The Aqua-Rocket Pro™ blasts a 0-degree water jet at 1500-5600 PSI, while rotating at an optimal speed to form a 22-degree cone-shaped spray pattern ideal for industrial cleaning applications. Constructed with stainless steel housings and tungsten carbide nozzle tips. Nozzles are equipped with a high-temperature, drop-resistant rubber cover.

Minimum Inlet Pressure: 1500 PSI (100 bar)

Maximum Inlet Pressure: 5600 PSI (345 bar)

Maximum Water Temp: 212° F (+100° C)

Housing Material: Stainless Steel

Cover Material: Rubber

Nozzle Tip Material: Tungsten Carbide

Inlet Connection Thread: 1/4 " FNPT



Manufacturer Number	Size	Westvac Number	Stocking WHS	Stocking							
				1500 PSI	2000 PSI	2500 PSI	3000 PSI	3500 PSI	4000 PSI	5000 PSI	
20021348	3.0			1.8	2.1	2.4	2.6	2.8	3.0	3.4	
20021349	3.5			2.1	2.5	2.8	3.0	3.3	3.5	3.9	
20021350	4.0			2.4	2.8	3.2	3.5	3.7	4.0	4.5	
20021351	4.5			2.8	3.2	3.6	3.9	4.2	4.5	5.0	
20021352	5.0			3.1	3.5	4.0	4.3	4.7	5.0	5.6	
20021353	5.5			3.4	3.9	4.3	4.8	5.1	5.5	6.2	
20021354	6.0			3.7	4.2	4.7	5.2	5.6	6.0	6.7	
20021355	8.0	WV-1002402-080		4.9	5.7	6.3	6.9	7.5	8.0	8.9	
20021356	10.0	WV-1002402-100		6.1	7.1	7.9	8.7	9.4	10.0	11.2	



Rebuild kits are available for extended nozzle life and lower overall operating costs. Kit includes a rubber boot, O-ring, tip insert, inlet screen, rotor assembly, and a seat retainer.

Aqua-Rocket Rebuild Kits

Manufacturer Number	Size	Westvac Number	Stocking WHS
1002616-0325	3.5		
1002616-040	4.0		
1002616-045	4.5		
1002616-050	5.0		
1002616-055	5.5		
1002616-060	6.0		
1002616-080	8.0	WV-1002616-080	
1002616-100	10.0	WV-1002616-100	



Ace



Deuce



Quad



Manufacturer Number	Size	Westvac Number	Stocking	
			WHS	
1002036-010	1.0			
1002036-020	2.0			
1002036-030	3.0			
1002036-040	4.0			
1002036-050	5.0			
1002036-060	6.0			
1002036-080	8.0			
1002036-100	10.0			
1002036-120	12.0			
1002035-020	2.0			
1002035-040	4.0			
1002035-060	6.0			
1002035-080	8.0	WV-1002035-080		
1002035-100	10.0			
1002035-120	12.0			
1002889	4.0			
1002949	6.0			
1001927	8.0			
1001928	10.0			
1002950	12.0			

Switchblade Nozzle Pills

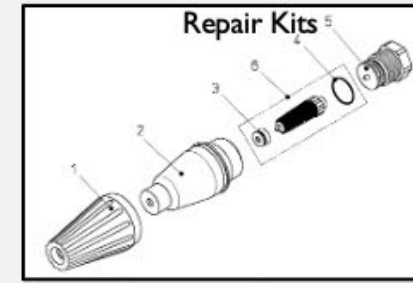
Manufacturer Number	Size	Color	Westvac Number	Stocking WHS	Stocking						
					1000 PSI	1500 PSI	2000 PSI	2500 PSI	3000 PSI	4000 PSI	
20022319	1.0	Blue			0.5	0.6	0.7	0.8	0.9	1.0	
20022320	2.0	Yellow			1.0	1.2	1.4	1.6	1.7	2.0	
20022321	3.0	Green			1.5	1.8	2.1	2.4	2.6	3.0	
20022322	4.0	Orange			2.0	2.4	2.8	3.2	3.5	4.0	
20022323	5.0	Purple			2.5	3.1	3.5	4.0	4.3	5.0	
20022324	6.0	Red			3.0	3.7	4.2	4.7	5.2	6.0	
20022325	8.0	Black			4.0	4.9	5.7	6.3	6.9	8.0	
20022326	10.0	White			5.0	6.1	7.1	7.9	8.7	10.0	
20022327	12.0	Pink			6.0	7.3	8.5	9.5	10.4	12.0	

ST-458 Hydro-Excavating Turbo Nozzle ½ FPT



- Added extension to the outlet to help prevent mud & dirt from damaging the seat & rotor
- Molded & wear resistant poly cover
- Different colors available per request
- **Ideal for hydro excavating**
- Orifice size stamped on inlet nut

Manufacturer Number	Size	Westvac Number	Stocking WHS
200458982	3.0		
200458983	3.5		
200458984	4.0		
200458985	4.5		
200458986	5.0		
200458987	5.5		
200458988	6.0	WV-AS457-6A	
200458989	7.0		
200458990	8.0	WV-AS457-8A	
200458991	9.0		
200458992	10.0	WV-AS457-10A	
200458993	12.0	WV-AS58-12A	



Pos.	Item-No.	Description
1	020001025	Protective cap
2	010001070	Housing brass
3	In Repair Kit	O-ring for ceramic seat
4	In Repair Kit	O-ring for inlet
5	010001088	Inlet, complete brass 030
	010001085	Inlet, complete brass 035
	010001086	Inlet, complete brass 040/045
	010001087	Inlet, complete brass 050/055
	010001089	Inlet, complete brass 060/065/070/080/090/100
6	In Repair Kit	Ceramic Nozzle



½ Nozzle Strainer

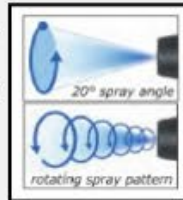
Part Number	Size	Westvac #	WHS
200033870	1/2	WV-STRAINER	

Nozzle Type	Manufacturer Number	Westvac Size Number	Stocking WHS
ST-357	200357130	3.0	
ST-357	200357135	3.5	
ST-357	200357140	4.0	
ST-357	200357145	4.5	
ST-357	200357150	5.0	
ST-357	200357155	5.5	
ST-357	200357170	7.0	
ST-357	200357180	8.0	
ST-357	200357190	9.0	
ST-357	200357110	10.0	
ST-458RED	200457130	3.0	
ST-458RED	200457135	3.5	
ST-458RED	200457140	4.0	
ST-458RED	200457145	4.5	
ST-458RED	200457150	5.0	
ST-458RED	200457155	5.5	
ST-458RED	200457160	6.0	WV-AS457-RK6
ST-458RED	200457170	7.0	
ST-458RED	200457180	8.0	WV-AS457-RK
ST-458RED	200457190	9.0	
ST-458RED	200457110	10.0	WV-AS457-10RK
ST-458RED	200458312	12.0	
ST-458	200458312	12.0	WV-AS58-12RK
ST-458	200458315	15.0	WV-AS58-15RK
ST-458	200458320	20.0	
ST-458	200458325	25.0	
ST-458	200458330	30.0	

ST-357 Turbo Nozzle ¼ FPT



- Increases cleaning efficiency as much as 200%
- The 0 degree rotation creates a cleaning & tearing action
- Ideal for hard surfaces
- Minimum 1000PSI



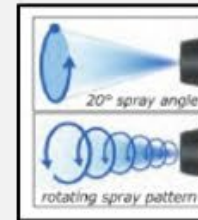
Strainer Replacement Screens

Part Number	Size	Westvac Number	WHS
710100005	1/2	WV-TURBO SCREEN	

ST-458 Turbo Nozzle ½ FPT



- Increases cleaning efficiency as much as 200%
- The 0 degree rotation creates a cleaning & tearing action
- Minimum 1000PSI
- Improved materials for a longer life
- **Ideal for hydro excavating**



Manufacturer Number	Size	Westvac Number	Stocking WHS
200357530	3.0		
200357535	3.5		
200357540	4.0		
200357545	4.5		
200357550	5.0		
200357555	5.5		
200357560	6.0	WV-200357560	
200357570	7.0		
200357580	8.0	WV-200357580	
200357590	9.0		
200357510	10.0	WV-200357210	

Manufacturer Number	Size	Westvac Number	Stocking WHS
200458712	12.0	WV-AS58-12	
200458715	15.0	WV-AS58-15	
200458720	20.0		
200458725	25.0		
200458730	30.0		



Dig Pig Hydro-Excavating Silencer Nozzles

Manufacturer Number	Size	Westvac Number	STOCKING WHS
DPNS-0040	#4 0.052"/1.32MM	DP-DPNS-0040	
DPNS-0060	#6 0.062"/1.57MM	DP-DPNS-0060	
DPNS-0080	#8 0.072"/1.83MM	DP-DPNS-0080	
DPNS-0090	#9 0.076"/1.93MM	DP-DPNS-0090	
DPNS-0100	#10 0.080"/2.03MM	DP-DPNS-0100	
DPNS-0120	#12 0.087"/2.21MM	DP-DPNS-0120	

Full stainless-steel inlet and body construction with advanced coin filter system for enhanced protection. Replaceable cover along with internal components for extended usability. Maximized shock impact technology for increased durability. Carbides and seats crafted from tungsten carbide. Hi-vis yellow cover for visibility and safety. 0 Degree orifice in a 10 degree rotation for precise application. 1/2 NPT4300 PSI and 205F/96C heat rating. Minimal vibration and low noise for operator comfort

Dig Pig Silencer Refresh Kit



Manufacturer Number	Size	Westvac Number	STOCKING WHS
DPNSR-0040	#4	DP-DPNS-0040	
DPNSR-0060	#6	DP-DPNS-0060	
DPNSR-0080	#8	DP-DPNS-0080	
DPNSR-0090	#9	DP-DPNS-0090	
DPNSR-0100	#10	DP-DPNS-0100	
DPNSR-0120	#12	DP-DPNS-0120	

Full Stainless steel Inlet and hard anodized body
Kit includes advanced coin filter, all O-rings, Seat and full rotor system



Dig Pig Silencer O-Ring Kit

Manufacturer Number	Size	Westvac Number	STOCKING WHS
DPNS-ORK	ALL SIZES	DP-DPNS-ORK	ABSC

Kit includes all 5 required O-rings for all sizes of silencers



Dig Pig Silencer Parts & Accessories

Manufacturer Number	Description	Westvac Number	STOCKING WHS
DPNS-FC	Single Filter Coin	DP-DPNS-FC	
DPNS-FC5P	5pk Filter Coin	DP-DPNS-FC5P	
DPNS-ORB	Silencer Replacement ORB Fitting	DP-DPNS-ORB	
DPNS-SEAT	Silencer Replacement Seat	DP-DPNS-SEAT	
DPNSCT-001	Silencer Seat-Cover Tool	DP-DPNSCT-001	
DPNS-SR	Silencer Spiral Ring	DP-DPNS-SR	



Dig Pig Silencer Replacement Covers

Manufacturer Number	Description	Size	Westvac Number	STOCKING WHS
DPNSRC-001	Standard Silencer Replacement Cover Require seat cover tool sold separately	All Sizes	DP-DPNSRC-001	
DPNSHDC-001	HD Silencer Replacement Cover Require seat cover tool sold separately	All Sizes	DP-DPNSHDC-001	
DPSNCU-001	Old Design Replacement Silencer Cover Nozzles that do not have 3 grooves in the inner body	All Sizes	DP-DPSNCU-001	



Titan Aluminum Lance (No Color)

Manufacturer Number	Size	Westvac Number	STOCKING WHS
DPLWENC-003	3FT Lance	DP-DPLWENC-003	
DPLWENC-004	4FT Lance	DP-DPLWENC-004	
DPLWNC-005	5FT Lance	DP-DPLWNC-005	
DPLWNC-006	6FT Lance	DP-DPLWNC-006	
DPLWNC-007	7FT Lance	DP-DPLWNC-007	

The LW Series lances and extensions are constructed from T6-6061 Sch 80 Aluminum & heavy duty 303 stainless-steel lance ends. They are corrosion free, & all sizes can be used as individual wands/lance or extensions. Non-anodized. The LW series last 6 times longer and stronger than traditional wands



Titan Aluminum Lance (RED)

Manufacturer Number	Size	Westvac Number	STOCKING WHS
DPLWE-003	3FT Lance	DP-DPLWE-003	
DPLWE-004	4FT Lance	DP-DPLWE-004	
DPLW-005	5FT Lance	DP-DPLW-005	
DPLW-006	6FT Lance	DP-DPLW-006	
DPLW-007	7FT Lance	DP-DPLW-007	

The LW Series lances and extensions are constructed from T6-6061 Sch 80 Aluminum with type 2 RED anodizing & heavy duty 303 stainless-steel lance ends. They are corrosion free, & all sizes can be used as individual wands/lance or extensions. Non-anodized. The LW series last 6 times longer and stronger than traditional wands



Titan HD Stainless Steel Lance

Manufacturer Number	Size	Westvac Number	STOCKING WHS
DPSSE-003	3FT Lance	DP-DPSSE-003	
DPSSE-004	4FT Lance	DP-DPSSE-004	
DPSS-005	5FT Lance	DP-DPSS-005	
DPSS-006	6FT Lance	DP-DPSS-006	
DPSS-007	7FT Lance	DP-DPSS-007	

The Titan HD Series lances and extensions are constructed from Sch 80 stainless-steel & heavy duty 303 stainless-steel lance ends, equipped with standard wrench flats, no pipe wrench is needed. 7700 PSI rating. Standard 1/2 male NPT ends. The toughest and longest lasting stainless-steel lance on the market. Corrosion/rust free

Easy Grip Handle (Red/No Color) & Gauge



Manufacturer Number	Description	Westvac Number	STOCKING WHS
DPEG-NC	Handle (No Color)	DP-DPEG-NC	
DPEG-0012	Handle (Red Anodized)	DP-DPEG-0012	
DPPG-001	Handle Gauge	DP-DPPG-001	



EASY GRIP HANDLE

The easy grip design gives you comfort with three mounting positions to choose from. Also made for horizontal and vertical mounting. Constructed of light weight aluminum. Engineer slot groves for hand grip. Comes with 3 1/2 FNPT ports with one plug.

GAUGE

The Dig Pig pressure gauge mounts easily on our easy grip handle for precise digging & true pressure readings at the palm of your hand. Great for critical digs. Full time pressure monitoring, 5000 PSI rating. Filled with silicone oil with a -40F & 1/2 MNPT Thread.



Amour Guard

Manufacturer Number	Description	Westvac Number	STOCKING WHS
DPSG-NC	1/2 Amour Guard (NC)	DP-DPSG-NC	
DPSG-0012	1/2 Amour Guard (Red)	DP-DPSG-0012	
DPSG-0034	3/4 Amour Guard (Red)	DP-DPSG-0034	

Six 20lb magnets allows you to attach and detach from the upper lance to the nozzle area in seconds for ultimate protection from flying debris. A great tool for congested areas with people, parked cars, close to building and traffic A safer application for the operator and the public. 1/2 FNPT dual ports.

Other colors available upon request: Black, Blue, Orange, Gold, Green & Silver

Note: Tool Grabber V shown in red and no color



Tool Grabber (Red)

Manufacturer Number	Description	Westvac Number	STOCKING WHS
DPTG-001	Tool Grabber I	DP-DPTG-001	
DPTG-002	Tool Grabber II	DP-DPTG-002	
DPTG-003	Tool Grabber III	DP-DPTG-003	
DPTG-004	Tool Grabber IV	DP-DPTG-004	
DPTG-005	Tool Grabber V	DP-DPTG-005	

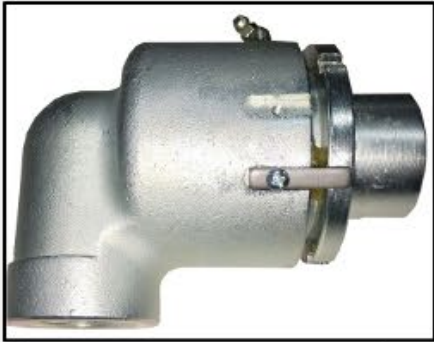


Tool Grabber (No Color)

Manufacturer Number	Description	Westvac Number	STOCKING WHS
DPTGNC-001	Tool Grabber I	DP-DPTGNC-001	
DPTGNC-002	Tool Grabber II	DP-DPTGNC-002	
DPTGNC-003	Tool Grabber III	DP-DPTGNC-003	
DPTGNC-004	Tool Grabber IV	DP-DPTGNC-004	
DPTGNC-005	Tool Grabber V	DP-DPTGNC-005	

Other colors available upon request: Black, Blue, Orange, Gold, Green & Silver

Adjustable 90 Degree Swivel



Part Number	Size	WHS
UE-U40052A	3/4"	
UE-U40052	1"	
UE-U43947	1 1/4"	

Straight Swivel Available

TM® swivel joints are manufactured and engineered to exacting specifications. Only the highest quality materials are used in manufacturing this product to ensure the purchaser a quality, dependable swivel with a longer life and less downtime than competitive models.

Advantages of the TM® Style Swivel -

The Housings are a PLATED steel investment cast for a longer life.

The Gland Nuts are PLATED & Heat Treated for longer wear.

The Rotary Sleeve is PLATED & Heat Treated for longer wear and milled with (2) flat areas that are machined on the rotary sleeve for wrench-tightening.

The Backup Ring is Nickel plated to prevent rust.

Zerk Fittings are installed to lubrication for longer wear.

Internal replacement parts are available.

Repair Parts Adjustable 90 Degree Swivel

Drawing Number	Description	Part Number	size	Stocking WHS
2,6,7	Swivel Repair Kit	UE-U43947A-30	1 1/4"	
2	Packing Seal Kit	UE-U44647	1 1/4"	
6	Bearing Kit	UE-U44648	1 1/4"	
7	Back-Up Ring	UE-U44650	1 1/4"	
2,6,7	Swivel Repair Kit	UE-U40052A-30	3/4 & 1"	
2	Packing Seal Kit	UE-U40375	3/4 & 1"	
6	Bearing Kit	UE-U42085	3/4 & 1"	
7	Back-Up Ring	UE-U42084	3/4 & 1"	
4	Grease Fitting	UE-U41759	ALL	
8	Ball Retainer Screw	UE-U40052.008	ALL	
9	Tab Retainer	UE-U40052.009	ALL	
10	Retainer Screw	UE-U40052.010	ALL	

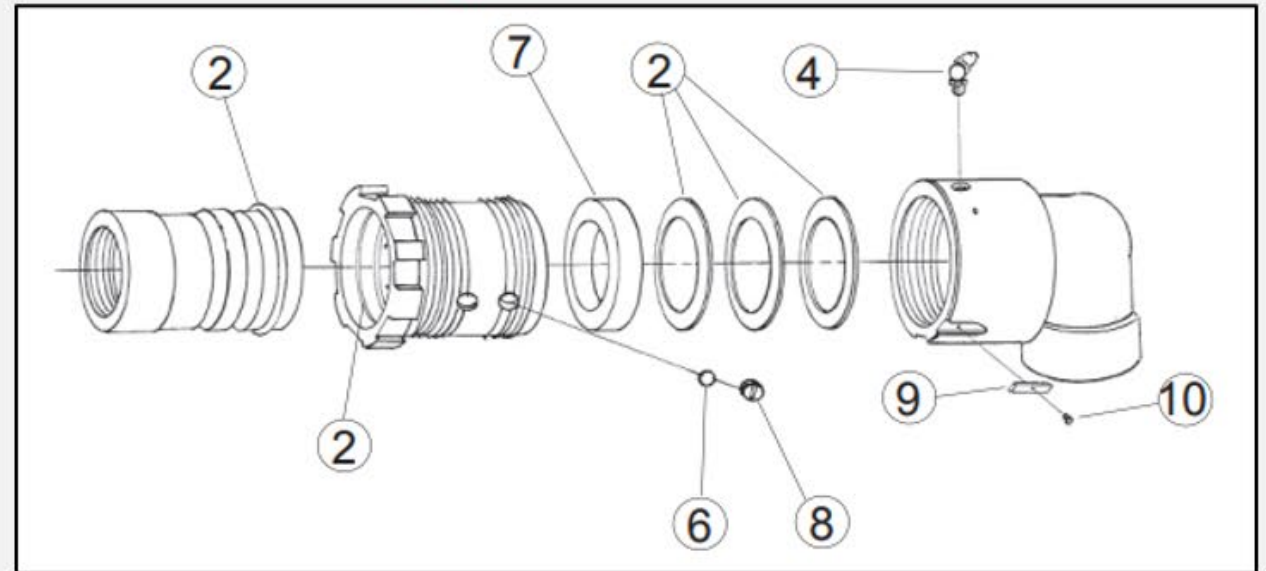
Non-Adjustable 90 Degree Swivel



Part Number	Size	Westvac Number	WHS
G40052HD	1"		
G43947HD	1 1/4"	UE-G43947HD	

Non Adjustable HD Swivel Seal Kit
G45247HD-KIT
1" & 1 1/4"

Over the last three years, UEMSI/HTV has continually developed and field-tested its revolutionary NEW hose reel HD Swivels. These swivels are currently available in both 1" and 1 1/4" FNPT versions, though other sizes are planned in the future. The swivel also contains a proprietary high-performance non-adjustable packing seal that has been designed for harsh field conditions to withstand rust, grit and temperature. The rotary sleeve is heat treated and industrial hard chrome plated along with the front retaining ring. The stud also has two machined flats on it to apply a wrench for installation on tightening. The housing is industrial powder painted red. Finally, the swivel is supplied with a grease fitting to be installed to freshen grease to extend the HD Swivel service life.





True-meter Dual Shaft Footage Counter

Manufacturer			STOCKING
Number	Description	Westvac Number	WHS
3602-047TC	1:1 Gear Ft Top Coming	WV-3602-047TC-TRUM	
3602-041TG	1:1 Gear Ft Top Going		
3602-111TG	1:1 Gear Ft/Inch Top Going		
3602-192TG	2:1 Gear m/cm Top Going		
3602-193TG	3:1 Gear m/cm Top Going		



Durant/Revolution Footage Counter

Manufacturer		Westvac	STOCKING
Number	Description	Number	WHS
U45054	RH Footage Counter	UE-U45054	
U45047	LH Footage Counter	UE-U45047	



4-Way Roller Assembly

Manufacturer		Westvac	STOCKING
Number	Description	Number	WHS
S3000-00347	4-Way Roller	UE-S3000-00347	
S3000-00347A	Replacement Rollers		



True-meter Counter

Manufacturer			STOCKING
Number	Description	Westvac Number	WHS
007571	Rubber Covered Plastic Wheel 3/4" W x 12" Circumference		
007573	Rubber Covered Plastic Wheel 3/4" W x 18" Circumference	WV-007573-1/2YD	
007574	Rubber Covered Plastic Wheel 3/4" W x 1/2M Circumference		
007905	Rubber Covered Plastic Wheel 3/4" W x 1/3M Circumference		



Durant/Revolution Counter Wheel

Manufacturer		Westvac	STOCKING
Number	Description	Number	WHS
U45046	Newer Vactor & Vac-con	UE-U45046	
U40867	Older Vactor Pre 1987		



Replacement Manhole Roller

Manufacturer		Westvac	STOCKING
Number	Description	Number	WHS
D0-7N	Nylon		
D0-7	Aluminum	UE-D0-7	



SERIES 4625 COBRA SEWER CLEANING HOSE – 2500 PSIG WORKING PRESSURE

Manufacturer		Stocking	
Number	Size/Description	Westvac Number	WHS
4625TS-12-400	400Ft 3/4 Orange 2500 PSI		
4525TS-12-500	500Ft 3/4 Orange 2500 PSI		
4625TS-12-600	600Ft 3/4 Orange 2500 PSI	WV-4625-12-600	
4625TS-12-800	800Ft 3/4 Orange 2500 PSI		
4625TS-16-400	400Ft 1" Orange 2500 PSI		
4625TS-16-500	500Ft 1" Orange 2500 PSI		
4625TS-16-600	600Ft 1" Orange 2500 PSI	WV-4625-16-600	
4625TS-16-800	800Ft 1" Orange 2500 PSI		



SERIES 4630 COBRA SEWER CLEANING HOSE – 3000 PSIG WORKING PRESSURE

Manufacturer		Stocking	
Number	Size/Description/Length	Westvac Number	WHS
4630TS-12-400	400Ft 3/4 Blue 3000 PSI		
4630TS-12-500	500Ft 3/4 Blue 3000 PSI		
4630TS-12-600	600Ft 3/4 Blue 3000 PSI	WV-4630-12-600	
4630TS-12-800	800Ft 3/4 Blue 3000 PSI		
4630TS-16-400	400Ft 1" Blue 3000 PSI		
4630TS-16-500	500Ft 1" Blue 3000 PSI		
4630TS-16-600	600Ft 1" Blue 3000 PSI	WV-4630-16-600	
4630TS-16-800	800Ft 1" Blue 3000 PSI		



SERIES 4640 COBRA SEWER CLEANING HOSE – 4000 PSIG WORKING PRESSURE

Manufacturer		Stocking	
Number	Size/Description/Length	Westvac Number	WHS
4640TS-08-400	400Ft 1/2 Green 4000 PSI		
4640TS-08-500	500Ft 1/2 Green 4000 PSI	WV-4640-08-500	
4640TS-08-600	600Ft 1/2 Green 4000 PSI		
4640TS-08-800	800Ft 1/2 Green 4000 PSI		

Note: Cobra hose reels are shipped with wooden reels for easier installation



Sewer Hose and Fittings

Couplings



Manufacturer Number	Description	Westvac Number	Stocking WHS
8MP-8SC	1/2 MALE NPT COBRA HOSE	WV-8MP-8SC	
8MS-8SC	1/2 MALE NPT SWIVEL		
8FNPSM-8SC	1/2 FEMALE NPSM		
12MP-12SC	3/4 NPT COBRA HOSE END	WV-12MP-12SC	
12FNPSM-12SC	3/4 FEMALE NPT SWIVEL		
16FNPSM-16SC	1" FEMALE NPT SWIVEL		
16MP-16SC	1" NPT COBRA HOSE END	WV-16MP-16SC	



Menders

Manufacturer Number	Description	Westvac Number	Stocking WHS
SCM-08	1/2 NPT COBRA MENDER	WV-SCM-08	
SCM-12	3/4 NPT COBRA MENDER	WV-SCM-12	
SCM-16	1" NPT COBRA MENDER	WV-SCM-16	

Standard Handle Manhole Cover Hook

The Manhole Cover Hook is heavy duty, manufactured using 5/8 hex heat-treated steel for strength, durability and extended life



Manufacturer Number	Description	Westvac Number	STOCKING WHS
MHH-18	18" Manhole Hook		
MHH-26	24" Manhole Hook		
MHH-36	36" Manhole Hook	UE-MHH-36	



Pick used to break up asphalt and lift the manhole cover with ease

Manufacturer Number	Description	Westvac Number	STOCKING WHS
POOK	3/4" Manhole Hook	ST-POOK	

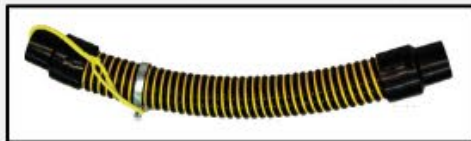
Adjustable Hydrant Spanner Wrench



Has a cast steel body and heavy-duty plated steel handle, this wrench is meant to last

Manufacturer Number	Description	Westvac Number	STOCKING WHS
U-189	18" Manhole Hook	UE-U-189	

Tyger Tails

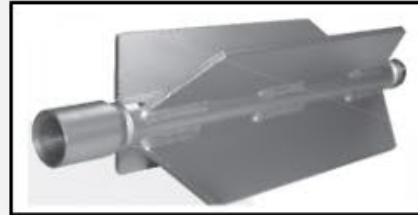


Manufacturer Number	Description	Westvac Number	Stocking WHS
D0-69	2" X36" Tyger Tail	UE-D0-69	
D0-89	3" X 36" Tyger Tail	UE-D0-89	
SJS-HD	3" X 36" HD Tyger Tail	WV-SJS-HD	

Note: Custom Lengths Available from 10 to 50ft

Finned Style Nozzle Skid Extension

Finned Style Nozzle Skid Extension is manufactured using heavy-duty steel tubing with four steel fins welded to it. The extension, when attached between the nozzle and the hose, keeps the nozzle centered in a pipe during the cleaning process and also prevents nozzle wear and improves performance for the nozzle due to increased cleaning efficiency and the fact it will not wander into a lateral



Manufacturer Number	FPT	Length	Skid Diameter	Fin Size	Weight	Westvac Number	Stocking WHS
D0-4A	3/8	7"	3"	1 1/4"	3.1lbs		
D0-5B	1/2	14"	3 3/4"	1 1/2"	5lbs		
D0-5B	3/4	17"	6"	2 1/2"	10lbs		
D0-5A	3/4	14 1/2"	4"	1 1/2"	6lbs		
D0-6	1"	17 1/2"	6 1/4"	2 1/2"	11lbs	UE-D0-6	
A0-6A	1"	14 3/4"	4 1/4"	1 1/2"	8lbs	UE-A0-6A	
D0-8	1 1/4"	17"	6 3/4"	2 1/2"	13lbs		
D0-8A	1 1/4"	14 1/2"	4 3/4"	1 1/2"	7.5lbs		

Six-Wire Proover Nozzle Skid Extension

Six-Wire Proover Nozzle Skid Extension is a heavy duty steel tube surrounded by six steel rounded runners that help center the nozzle in the pipeline that is being cleaned. This skid extension also prevents nozzle wear and improves performance of the nozzle and its cleaning efficiency. As well, the skid extension prevents the nozzle from entering laterals. To be used between the nozzle and hose.



Manufacturer Number	FPT	Description	Length	Skid Diameter	Westvac Number	Stocking WHS
UE69504-.50	1/2"	Proover 4" Line	14 1/2"	3 1/2"		
UE69504-.75	3/4"	Proover 4" Line	15"	3 1/4"		
UE69504	1"	Proover 4" Line	15"	3 1/4"	UE-UE69504	
UE69506-.75	3/4"	Proover 6" Line	14 1/2"	5 3/4"		
UE69506	1"	Proover 6" Line	14 1/2"	5 3/4"	UE-UE69506	
UE69508-.75	3/4"	Proover 8" Line	17"	7 1/2"		
UE69508	1"	Proover 8" Line	17"	7 1/2"	UE-UE69508	
UE69510-.75	3/4"	Proover 10" Line	18 1/4"	9 1/4"		
UE69510	1"	Proover 10" Line	18 1/4"	9 1/4"	UE-UE69510	
UE69512-.75	3/4"	Proover 12" Line	18 1/4"	11 1/4"		
UE69512	1"	Proover 12" Line	18 1/4"	11 1/4"	UE-UE59512	
UE69515-.75	3/4"	Proover 15" Line	22 5/8"	14 1/4"		
UE69515	1"	Proover 15" Line	22 5/8"	14 1/4"		

STEEL REINFORCED FIBERGLASS POLES(SUPER STIFF) QUICK CONNECT



Manufacturer Number		Size	Westvac Number	WHS
STD-3ST		3' SINGLE MALE X FEMALE POLE		
STD-6ST		6' SINGLE MALE X FEMALE POLE		
STD-21ST		21' SET OF 3 6' & 1 3'MALE X FEMALE POLES		
STD-24ST		24' SET OF 3 MALE X FEMALE POLES, 1 FEMALE POLE		

ALUMINUM POLES W/ALUMINUM QUICK CONNECT ENDS



Manufacturer Number		Size	Westvac Number	WHS
AP-6		SINGLE 6' MALE X FEMALE POLE		
AP-12		6' SET OF 2 MALE X FEMALE POLES		
AP-18		6' SET OF 3 MALE X FEMALE POLES		
AP-24		6' SET OF 4 MALE X FEMALE POLES	ST-AP-24	

Grease Log Chopper

6" Curved chopper for fiberglass poles. Grease log chopper now with curved side to better push material. These choppers are very sharp and can chop up wood, Grease or mud. Zinc plated



Manufacturer Number		Size	Westvac Number	WHS
LC-9		6"	ST-LC-9	

CAMERA HOOKS



3" zinc plated small diameter camera gaffing hook – Made of strong spring steel & cold bent to the hook design. Connects to the quick-change fiberglass poles. Red ball on end is removable

Manufacturer Number		Size	Westvac Number	WHS
CAM-2		8"	ST-CAM-2	

SEWER HOSE GRABBERS

8" x 1/4" zinc plated steel - Improved hose grabber for fiberglass poles, angle ends to allow easy entry for hose. This is a great tool for pushing down on the hose as the nozzle comes out of line. Keeps it horizontal



Manufacturer Number		Size	Westvac Number	WHS
HG-1		8"	ST-HG-1	

SPOONS

9" DIA Rounder Catch Basin Spoon. Connects to all quick-change poles. This is a 9" Diameter steel spoon that will scoop out larger amounts of muc & debris



Manufacturer Number		Size	Westvac Number	WHS
PS-1		9"	ST-PS-1	

PIKE POLE ATTACHMENT

Tough like a firefighters pike pole attachment os made of cast steel. Painted black



Manufacturer Number		Size	Westvac Number	WHS
PP-125			ST-PP-125	

4-PRONGED DEBRIS GRABBER

8" Wide 4-Pronged Zinc Plated Debris Grabber – Pulls out roots, rocks, cans & other debris from manhole.



Manufacturer Number		Size	Westvac Number	WHS
4PG-1		8"	ST-4PG-1	

SEWER HOSE GRABBERS

7" x 3/8 zinc plated spring Steel - Wide opposite hose grabber, opposing C hooks grab hose in middle & twist for easy grabbing. Allows you to move the hose from side to side or push on it in any direction.



Manufacturer Number		Size	Westvac Number	WHS
SHT-1		8"	ST-SHT-1	

G2-1/8 Mini Penetrator Nozzle



The G2-series features an outer under-cut ledge where the rear-facing jets are drilled into to prolong nozzle life and smooth, non-turbulent water flow for pressures up to 4000 PSI, ranging from 3 to 10 GPM. The G2 series nozzles have a 1/8" FPT connection with three-to-six rear facing jets and can be ordered with or without an optional front jet to maximize cleaning tasks, most notably in the plumbing industry

Manufacturer Number	Description	Rear Jet			Westvac Number	Stocking WHS
		Degree	GPM	PSI		
G2-33	1 FRT/3 RR JETS	30	3-4	UP TO 4000		
G2-34	1 FRT/4 RR JETS	30	5-6	UP TO 4000		
G2-35	1 FRT/5 RR JETS	30	7-8	2000-3000		
G2-36	1 FRT/6 RR JETS	30	7-8	2000-3000	UE-G2-36	
G2-303	0 FRT/3 RR JETS	30	3-4	UP TO 4000		
G2-304	0 FRT/4 RR JETS	30	5-6	UP TO 4000		
G2-305	0 FRT/5 RR JETS	30	7-8	2000-3000		
G2-306	0 FRT/6 RR JETS	30	9-10	2000-3000		

G7-1/4 Radial Bullet Nozzle



The Radial Bullet nozzle is designed for general cleaning and efficient debris removal for pump pressures up to 4000 PSI, ranging from 3 to 10 GPM. The G7 series Radial Bullet nozzles have a 1/4" FPT connection and three-to-six rear-facing jets, dependent on GPM. Each nozzle can be ordered with or without an optional front jet.

Manufacturer Number	Description	Rear Jet			Westvac Number	Stocking WHS
		Degree	GPM	PSI		
G7-33	1 FRT/3 RR JETS	30	3-4	UP TO 4000		
G7-34	1 FRT/4 RR JETS	30	5-6	UP TO 4000	UE-G7-34	
G7-35	1 FRT/5 RR JETS	30	7-8	2000-3000		
G7-36	1 FRT/6 RR JETS	30	9-10	2000-3000		
G7-45	1 FRT/5 RR JETS	40	7-8	2000-3000		
G7-46	1 FRT/6 RR JETS	40	9-10	2000-3000		
G7-303	0 FRT/3 RR JETS	30	3-4	UP TO 4000		
G7-304	0 FRT/4 RR JETS	30	5-6	UP TO 4000		
G7-306	0 FRT/6 RR JETS	30	9-10	2000-3000		

G0-1/4 Penetrator Nozzle



The G0 series nozzles have a 1/4" FPT connection with three-to-six rear facing jets and front jet to blast through blockages. The standard 15-degree rear-facing jets help penetrate through obstructions at pump pressures up to 4000 PSI, ranging from 3 to 10 GPM

Manufacturer Number	Description	Rear Jet			Westvac Number	Stocking WHS
		Degree	GPM	PSI		
G0-13	1 FRT/ 3 RR JETS	15	3-4	UP TO 4000		
G0-14	1 FRT/ 4 RR JETS	15	5-6	UP TO 4000		
G0-15	1 FRT/ 5 RR JETS	15	7-8	2000-3000	UE-G0-15	
G0-16	1 FRT/ 6 RR JETS	15	9-10	2000-3000		

G5-3/8 Penetrator Nozzle



The G5 series nozzles have a 3/8" FPT connection with three-to-six rear facing jets and front jet to blast through blockages. The standard 15° rear-facing jets add greater thrust to help penetrate through obstructions at pump pressures up to 3000 PSI, ranging from 3 to 10 GPM

Manufacturer Number	Description	Rear Jet			Westvac Number	Stocking WHS
		Degree	GPM	PSI		
G5-13	1 FRT/ 3 RR JETS	15	3-4	2000-3000		
G5-14	1 FRT/ 4 RR JETS	15	5-6	2000-3000		
G5-15	1 FRT/ 5 RR JETS	15	7-8	2000-3000	UE-G5-15	
G5-16	1 FRT/ 6 RR JETS	15	9-10	2000-3000	UE-G5-16	

G8-3/8" Radial Button Nozzle



Using the same principles as the G7-series nozzles, the G8 Radial Bullet nozzle is designed for general cleaning and efficient debris removal for pump pressures up to 4000 PSI, ranging from 3 to 10 GPM. The G8 series Radial Bullet nozzles have a 3/8" FPT connection and three-to-six rear-facing jets, dependent on GPM. Each nozzle can be ordered with or without an optional front jet

Manufacturer Number	Description	Rear Jet Degree	GPM	PSI	Westvac Number	Stocking WHS
G8-33	1 Frt/3 Rr Jets	30	3-4	Up to 4000		
G8-34	1 Frt/4 Rr Jets	30	5-6	Up to 4000		
G8-35	1 Frt/5 Rr Jets	30	7.8	2000-3000		
G8-36	1 Frt/6 Rr Jets	30	9-10	2000-3000	UE-G8-36	
G8-46	1 Frt/5 Rr Jets	40	7-8	2000-3000		
G8-303	1 Frt/3 Rr Jets	30	3-4	Up to 4000		
G8-304	1 Frt/4 Rr Jets	30	5-6	Up to 4000		
G8-306	1 Frt/5 Rr Jets	30	7-8	2000-3000		
G8-406	1 Frt/6 Rr Jets	40	9-10	2000-3000		
G8-403	1 Frt/3 Rr Jets	40	3-4	Up to 4000		



F5 1/2 Button Style Short Nozzle

The F5 has six 45° rear jets and is available with or without a front jet. The F5 is great for general purpose cleaning in laterals and small diameter mainline pipe. Using a 1/2" FPT connection, F5 series is available in 8 to 35 GPM and up to 4000 PSI pump pressure. Requires use of a nozzle extension.

Manufacturer Number	Description	Rear Jet Degree	GPM	PSI	Westvac Number	Stocking WHS
F5-315	Button Short w/Frt Jet	45	8-15	Up to 4000	UE-F5-315	
F5-315N	Button Short w/o Frt Jet	45	8-15	Up to 4000		
F5-325	Button Short w/Frt Jet	45	15-25	2000-3000	UE-F5-325	
F5-325N	Button Short w/o Frt Jet	45	15-25	2000-3000	UE-F5-325N	
F5-380	Button Short w/Frt Jet	45	30-35	2000-3000		

1/2 Penetrator Nozzle



The Penetrator has six rear-facing 45° jets and has a front base-tip jet to aid in blasting through blockages, as well as general cleaning needs. Using a 1/2" FPT connection, the Penetrator can generate up to 4000 PSI pump pressure at 8 to 25 GPM.

Manufacturer Number	Description	Rear Jet Degree	GPM	PSI	Westvac Number	Stocking WHS
F1-115	Penetrator	45	8-15	Up to 4000	UE-F1-115	
F1-125	Penetrator	45	15-25	2000-3000	UE-F1-125	

1/2 Penetrator Lance Tip Nozzle



The Penetrator Lance Tip has six rear-facing 45° jets and has a front base-tip jet to aid in blasting through blockages. The Penetrator Lance Tip also features four side-body jets to impact grease, soap and scale build-up on pipe walls. Using a 1/2" FPT connection, the Penetrator can generate up to 4000 PSI pump pressure at 8 to 25 GPM.

Manufacturer Number	Description	Rear Jet Degree	GPM	PSI	Westvac Number	Stocking WHS
F1-1115	Lance Tip Penetrator	45	8-15	Up to 4000	UE-F1-1115	
F1-1125	Lance Tip Penetrator	45	15-25	2000-3000	UE-F1-1125	



3/4 Penetrator Lance Tip Nozzle

Each E2-13 has six rear 12° jets, four side jets and one front-facing jet. The E2-13 is great for general pipe cleaning and breaking through clogs and plugged up pipe, most specifically in 6" to 12" pipe. Standard 3/4" FPT connection, and available for sewer cleaning machines up to 40 GPM and up to 3000 PSI pump

Manufacturer Number	Description	Rear Jet Degree	GPM	PSI	Westvac Number	Stocking WHS
E2-1335	Lance Tip Penetrator	12	35-40	Up TO 1800	UE-E2-1335	
E2-1335V	Lance Tip Penetrator	12	35-40	3000		



1" Radial Bullet Nozzle

The A4-2 nozzle has six rear-facing jets either 18° or 30° and is available with or without a front jet. The A4-2 nozzle is great for general pipe cleaning in 6" to 18" pipe. The A4-2, featuring a 1" FPT connection, is available for sewer cleaning machines up to 80 GPM and up to 3000 PSI pump pressure.

Manufacturer Number	Description	Rear Jet			Westvac Number	Stocking WHS
		Degree	GPM	PSI		
A4-245-3000	1 Frt / 6 Rear	18	45	3000		
A4-250-3000	1 Frt / 6 Rear	18	50	3000		
A4-260	1 Frt / 6 Rear	18	60	2000		
A4-280	1 Frt / 6 Rear	18	80	2000		
A4-2A45	1 Frt / 6 Rear	30	45	2000		
A4-2A50-3000	1 Frt / 6 Rear	30	50	3000		
A4-2A60	1 Frt / 6 Rear	30	60	2000	UE-A4-2A60	
A4-2A80	1 Frt / 6 Rear	30	80	2000	UE-A4-2A80	
A4-2N45	6 Rear	18	45	2000		
A4-2N50-3000	6 Rear	18	50	3000		
A4-2N60	6 Rear	18	60	2000	UE-A4-2N60	
A4-2N80	6 Rear	18	80	2000		
A4-2NA45	6 Rear	30	45	2000		
A4-2NA50-3000	6 Rear	30	50	3000		
A4-2NA60	6 Rear	30	60	2000	UE-A4-2NA60	
A4-2NA80	6 Rear	30	80	2000		

1" Petee Nozzle



Petee nozzle, equipped with a 1" FPT connection, is made for heavy-duty pipe cleaning. Made of steel, it has reinforced welded runners to center the nozzle in the middle of the pipe. Twelve rear dual-degree 17° and 24° removable jet orifices provide 360° of powerful water-jet streams to fully clean any heavy debris in the bottom of a pipe such as sand, gravel, and heavy organic build-up. Has optional removable front jet orifice when penetrating and breaking up debris is needed. Performs best in 10" to 36" storm and sanitary pipes. For sewer cleaning machines up to 80 GPM and up to 3000 PSI pump pressure.

Manufacturer Number	Description	Rear Jet			Westvac Number	Stocking WHS
		Degree	GPM	PSI		
P100256	Petee	17&24	60-65	1675-2000	UE-P100256	
P100280	Petee	17&24	80	1675-2000		



1" Penetrator Nozzle

The A3-1 is equipped with six rear 12° jets with one front jet. The A3-1 is great for general pipe cleaning and breaking through clogs and plugged up 6" to 18" pipe. The A3-1 is available for sewer cleaning machines up to 80 GPM and up to 3000 PSI pump pressure.

Manufacturer Number	Description	Rear Jet			Westvac Number	Stocking WHS
		Degree	GPM	PSI		
A3-145	1 Frt / 6 Rr	12	35 to 45	1675 to 2000	UE-A3-145	
A3-150	1 Frt / 6 Rr	12	50	1675 to 2000		
A3-160	1 Frt / 6 Rr	12	60 TO 65	1675 to 2000		
A3-160-3000	1 Frt / 6 Rr	12	60	3000		
A3-180	1 Frt / 6 Rr	12	80	1675 to 2000		

1" Typhoon Nozzle



Typhoon nozzle is manufactured using stainless steel for the nozzle body and rotating drum. This nozzle has six 24° rear replaceable orifices and three 60° replaceable orifices in the rotating drum. This is an excellent nozzle for de-scaling and cutting grease, calcium and root fibers from the inner walls of 8" to 24" pipe. The Typhoon is available for sewer cleaning machines up to 80 GPM and up to 2000 PSI pump pressure. Replacement jet orifices are available. Requires use of a nozzle extension.

Manufacturer Number	Description	Rear Jet			Westvac Number	Stocking WHS
		Degree	GPM	PSI		
RT-8651	Typhoon	24	50-65	1250-1675		
RT-8652	Typhoon	24	50-65	1675-2000		
RT-8802	Typhoon	24	80	1675-2000	UE-RT-8802	



Standard Cleaning Nozzle 3/8 – 1 ¼ NPT

Applications: Removal of sludge deposits and clogging

Manufacturer Number	Westvac Number	Stocking WHS	Connecting Thread	Pipe Range	Min Flow @1450 PSI	Rotating Jets	Thrust Jets	Angle	Front Jets	Angle	Dimensions	Weight	Max Pressure
30.038N	EN-30.038N		3/8 NPT	2-6"	3 GPM	None	6 x M4	30	1 x M4	N/A	1" X 1.5"	0.15 Lbs	5000 PSI
30.050	EN-30.050		1/2 NPT	2-8"	8 GPM	None	6 x M4	30	1 X M6	N/A	1.2" X 1.9"	0.26 Lbs	5075 PSI
30.075			3/4 NPT	2-10"	13 GPM	None	6 X M6	30	1 X M6	N/A	1.5" X 2.4"	0.53 Lbs	5075 PSI
30.100	EN-30.100		1 NPT	6-14"	32 GPM	None	8 X M8	30	1 X M8	N/A	2.4 X 3.3"	1.55 Lbs	3625 PSI
30.100SP20			1 NPT	6-14"	32 GPM	None	8 X M8	20	1 X M8	N/A	2.4 X 3.3"	1.55 Lbs	3625 PSI
30.125			1 1/4 NPT	8-16"	53 GPM	None	8 XM8	30	1 X M8	N/A	2.7" 4.1"	3.01 Lbs	3625 PSI

Made of wear-resistant, hardened steel, provided with front jet insert and blind plug (interchangeable). Angle of jet backwards, sturdy wall thickness, long service life and a minimum of wear and tear. All Nozzles have steel-ceramic inserts. Because of this, the efficiency is considerably higher compared with nozzles that have drilled holes and the service life is several times longer.

Standard Cleaning Nozzle 3/8 – 1 NPT

Applications: Removal of sludge deposits and clogging



Manufacturer Number	Westvac Number	Stocking WHS	Connecting Thread	Pipe Range	Min Flow @1450 PSI	Rotating Jets	Thrust Jets	Angle	Front Jets	Angle	Dimensions	Weight	Max Pressure
35.038N			3/8 NPT	2-6"	3 GPM	None	6 x M4	30	4 X M4	15	1.0" X 1.6"	0.15 Lbs	5000 PSI
35.050			1/2 NPT	2-8"	13 GPM	None	6 x M6	30	3XM4 1XM6	15	1.2" X 1.9"	0.26 Lbs	5075 PSI
35.100			3/4 NPT	6-14"	32 GPM	None	6 X M8	30	4 X M8	15	2.4 X 3.3"	1.55 Lbs	5075 PSI

Made of wear-resistant, hardened steel, provided with front jet insert and blind plug (interchangeable). Angle of jet backwards, sturdy wall thickness, long service life and a minimum of wear and tear. All Nozzles have steel-ceramic inserts. Because of this, the efficiency is considerably higher compared with nozzles that have drilled holes and the service life is several times longer.

360° Standard Nozzle ¼ – ½ NPT

Applications: To open clogged pipes (specifically due to soap and grease)

NEW



Manufacturer Number	Westvac Number	Stocking WHS	Connecting Thread	Pipe Range	Min Flow @1450 PSI	Rotating Jets	Thrust Jets	Angle	Front Jets	Angle	Dimensions	Weight	Max Pressure
30.50AN-12			1/4 NPT	2.0-7.9"	6.6 GPM	None	12 x M4		1 x M4	N/A	1.8 x 1.2"	0.3 Lbs	7200 PSI
30.50BN-12			3/8 NPT	2.0-7.9"	6.6 GPM	None	12 x M4		1 x M4	N/A	1.8 x 1.2"	0.3 Lbs	7200 PSI
30.50C-12	EN-30.50C-12		1/2 NPT	2.0-7.9"	6.6 GPM	None	12 x M4		1 x M4	N/A	1.8 x 1.2"	0.3 Lbs	7200 PSI

NEW: 360° cleaning · High water density · With or without front jet · Recyclable water · Little wear

Chisel Point Nozzle 3/8 – 1 ¼ NPT

Applications: Penetrating of completely clogged pipes, opening of interlaced roots & opening of frozen pipelines



Manufacturer Number	Westvac Number	Stocking WHS	Connecting Thread	Pipe Range	Min Flow @1450 PSI	Rotating Jets	Thrust Jets	Angle	Front Jets	Angle	Dimensions	Weight	Max Pressure
60.038N			3/8 NPT	1.1-3.9"	8 GPM	None	3 x M4	20	4 X M4	15	1 X1.7"	0.18 Lbs	5000 PSI
60.050			1/2 NPT	2-6"	13 GPM	None	3 x M6	25	4 X M4	15	1.3 X 2.2"	0.31 Lbs	5000 PSI
60.075			3/4 NPT	2-10"	26 GPM	None	3 X M6	25	4 X M4	15	1.5 X 3.2"	0.71 Lbs	5075 PSI
60.100	EN-60.100		1 NPT	4-12"	40 GPM	None	6 x M6	25	4 X M6	15	1.9 X 3.5"	1.21 Lbs	3625 PSI
60.100L			1 NPT	6-16"	53 GPM	None	6 X M10	25	4 X M8	15	2.7 X 7.4"	5.95 Lbs	3625 PSI
60.100L80			1 NPT	6-20"	53 GPM	None	6 X M10	10	4 X M8	15	3.1 X 8.6"	10.32 Lbs	3625 PSI
60.125			1 1/4 NPT	6-16"	53 GPM	None	6 X M6	20	4 X M6	15	2.3 X 3.9"	17.6 Lbs	3600 PSI
60.125L			1 1/4 NPT	8-32"	79 GPM	None	6 X M10	10	4 X M8	15	3.9 X 10.2	18.52 Lbs	3625 PSI

Concentrated powerful advance by means of 4 front jet nozzles. The sharp edges cut, break and penetrate through every kind of blockage. Made of wear-resistant, hardened steel. All nozzles from art. 60.038 onward are provided with ceramic inserts. Because of this, the efficiency is considerably higher compared with those nozzles with drilled holes and the service life is several times longer.

Rotodrill Nozzle 3/8 – 1 NPT

Applications: Removal of Sludge deposits and clogging



Manufacturer Number	Westvac Number	Stocking WHS	Connecting Thread	Pipe Range	Min Flow @1450 PSI	Rotating Jets	Thrust Jets	Angle	Front Jets	Angle	Dimensions	Weight	Max Pressure
36.025ANS			1/8 NPT	1.6-4"	4.8 GPM	None	3 X 1.0	7	1 X 0.90	12	1.5 X 0.9"	0.1 LBS	5000 PSI
36.025BNS			1/4 NPT	1.6-4"	4.8 GPM	None	3 X 1.0	7	1 X 0.90	12	1.5 X 0.9"	0.1 LBS	5000 PSI
36.038N			3/8 NPT	2-6"	6.6 GPM	None	6 x M4	15	1 x 0.90-1.80	7	1.3 x 2.6"	0.66 LBS	5000 PSI
36.050			1/2 NPT	2-6"	6.6 GPM	None	6 x M4	15	1 x 0.90-1.80	7	1.3 x 2.4"	0.44 LBS	5000 PSI
36.075			3/4 NPT	3-8"	20 GPM	None	6 x M6	30	1 x 0.90-1.80	7	1.5 x 3.0"	0.75 LBS	5000 PSI
36.100	EN-36.100		1" NPT	4-10"	27 GPM	None	6 x M8	25	1 x 2.70	7	2.2 x 3.7"	1.91 LBS	3600 PSI

Rotodrill Rebuild Kits



Manufacturer Number	Description	Front Jet	Westvac Number	Stocking WHS
66.21040.020	3/8 - 3/4 Rotodrill	0.9MM		
66.21040.040	3/8 - 3/4 Rotodrill	1.2MM		
66.21040.060	3/8 - 3/4 Rotodrill	1.5MM		
66.21040.080	3/8 - 3/4 Rotodrill	1.8MM		
66.21060.200	1" Rotodrill	2.7MM	EN-66.21060-200	

The Rotodrill is a universal pipe cleaning nozzle suitable for pipe diameters between 2" and 10", depending on the design. Its special feature: Thanks to its cone-shaped rotating front jet, the Rotodrill mills through the clog in one operation. At the same time, most of the available water volume pushes the Rotodrill forward and transports the dirt out of the pipe. Customized repair kits allow for quick, easy maintenance. In the Rotodrill REV (Reverse), the rotating jet is directed backwards. This allows deposits to be flushed efficiently out of the pipe. The pipe wall is cleaned at the same time.

Grenade Bombs 1"NPT



Applications: Removal of loose rubble, stone, gravel and soft deposits and for previous cleaning before use of chain flail head or cutter

Manufacturer Number	Westvac Number	Stocking WHS	Connecting Thread	Pipe Range	Min Flow @1450 PSI	Rotating Jets	Thrust Jets	Angle	Front Jets	Angle	Dimensions	Weight	Max Pressure
40.100A			1 NPT	5-12"	40 GPM	None	10 XM10	10/30	1 X M10	N/A	3.1 X 6.9"	10.80 LBS	3625 PSI
40.100A-SP10			1 NPT	5-12"	40 GPM	None	10 XM10	10	1 X M10	N/A	3.1 X 6.9"	10.80 LBS	3625 PSI
40.100B	EN-40.100B		1 NPT	6-16"	40 GPM	None	10 XM10	10/30	1 X M10	N/A	3.9 X 8.1"	17.64 LBS	3625 PSI

This enz® jet nozzle is made of wear-resistant hardened steel. The "grenade" and the "bomb" are joined in the same nozzles. Different jet angles perform together strong traction and effective cleaning. The high efficiency is reached by appropriate water guidance.

360 Grenade Bomb 1"NPT



Applications: Removal of loose rubble stone, gravel and soft deposits, for a previous cleaning before the use of chain flail head or cutter
For an all-around cleaning

Manufacturer Number	Westvac Number	Stocking WHS	Connecting Thread	Pipe Range	Min Flow @1450 PSI	Rotating Jets	Thrust Jets	Angle	Front Jets	Angle	Dimensions	Weight	Max Pressure
42.100A			1 NPT	6-12"	50 GPM	None	12 XM10	10/30	1 X M10	N/A	3.1 X 6.9"	10.80 LBS	3600 PSI
42.100B-12	EN-42.100B-12		1 NPT	6-12"	50 GPM	None	12 XM10	10/45	1 X M10	N/A	3.9 X 7.2"	17 LBS	3600 PSI
42.100B-18			1 NPT	6-16"	80 GPM	None	18 XM10	10/45	1 X M10	N/A	3.9 X 7.2"	17 LBS	3600 PSI

For optimal all-around cleaning all nozzles are equipped with fan-jet ceramic-steel inserts.

Bulldog Antiblast 1" - 1 ¼ NPT



Applications:

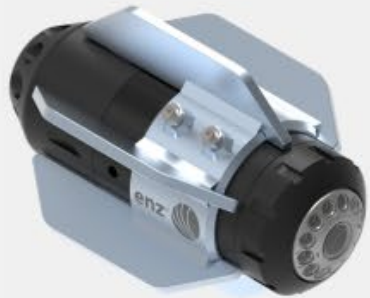
Manufacturer Number	Westvac Number	Stocking WHS	Connecting Thread	Pipe Range	Min Flow @1450 PSI	Rotating Jets	Thrust Jets	Angle	Front Jets	Angle	Dimensions	Weight	Max Pressure
600.080	EN-600.080		1 NPT	8-16"	48 GPM	6 X M10	6 X M8		1 X M10	15	3.9 X 8.1"	9.39 LBS	1160 PSI
600.100A	EN-600.100A		1 NPT	10-24"	53 GPM	6 X M10	6 X M10		1 X M10	15	5.1 X 10.2"	16.76 LBS	1160 PSI
600.100B			1 NPT	10-24"	53 GPM	6 X M10	6 X M10		1 X M10	15	5.1 X 10.2"	16.76 LBS	1160 PSI

Cleaning sewer lines when near home installations brings the risk of pressure equalization through toilets or stench traps. This comes from negative pressure arising ahead of the nozzle or excess pressure following the nozzle if the installation is not correct or venting is not working properly. It's a very unpleasant surprise when this effect unintentionally turns a toilet into a shower! For this reason, enz® collaborated with a prestigious technical institute to develop and test the Bulldog® Antiblast. The Bulldog® Antiblast prevents this unpleasant side effect and guarantees cleaning in all directions, right down to the pores.

Advantages

- No pressure equalization through stench traps or toilets
- Excellent streak-free, all-around cleaning
- Low maintenance, and compatible with recycled water
- Proven design
- Very simple to match to pump capacity
- Scientifically examined and tested

eBomb 1" – 1 ¼ NPT enz® Camera – the camera nozzle with integrated data management



Manufacturer Number	Westvac Number	Stocking WHS	Connecting Thread	Pipe Range	Min Flow @1450 PSI	Rotating Jets	Thrust Jets	Angle	Front Jets	Angle	Dimensions	Weight	Max Pressure
40.250iB	EN-40.250iB		1"	10-16	40		10 x M10				10.4" x 6.8"	27.3 lbs	3600 PSI
40.150iB			1"	eBomb Nozzle Only									
40.250iPB			1"	eBomb with Plastic Skids									
40.250iC			1 1/4"	10-16	40		10 x M10				10.4" x 6.8"	27.3 lbs	3600 PSI
40.150iC			1 1/4"	eBomb Nozzle Only									
40.250iPC			1 1/4"	eBomb with Plastic Skids									

The enz® Camera Nozzle adds a new dimension to the enz® nozzle product range! The modular design allows universal use with all nozzle types, such as the eBomb or the eBulldog, and thus guarantees streak-free all-around cleaning in every application! The HD-ready resolution and 12 high-power LEDs deliver high-resolution video footage for quality control, documentation, and preliminary inspection. Data management is fully integrated into the system through the WiFi interface and connection to the enz® Cloud. All your manholes and channels are automatically mapped on Google Maps with the videos. The enz® Camera Nozzle, which is simple, fast, and robust, increases productivity without any negative impact on the cleaning performance or quality. The eBomb 1" – 1 ¼" with cage and plastic skids are specially designed for pipes with inlines. The corresponding app for [iOS](#) and [Android](#) is available for download.

Accessories



**eBulldog Camera Housing
40.100iBW**



**Cage for eBomb (250)
40.2504i**



**Plastic Skid for eBomb (250)
40.2505i**

eBulldog 3/4" – 1 ¼ NPT enz® Camera – the camera nozzle with integrated data management



Manufacturer Number	Westvac Number	Stocking WHS	Connecting Thread	Pipe Range	Min Flow @1450 PSI	Rotating Jets	Thrust Jets	Angle	Front Jets	Angle	Dimensions	Weight	Max Pressure
402.200iA			3/4"	11.8-31.5	53	6 X M10	9 X M8				12.8" X 6.3" X 5.1"	20 LBS	2900 PSI
402.200iB			1"	11.8-31.5	53	6 X M10	9 X M8				12.8" X 6.3" X 5.1"	20 LBS	2900 PSI
402.200iC			1 1/4"	11.8-31.5	53	6 X M10	9 X M8				12.8" X 6.3" X 5.1"	20 LBS	2900 PSI

The enz® Camera Nozzle adds a new dimension to the enz® nozzle product range! The modular design allows universal use with all nozzle types, such as the eBomb or the eBulldog, and thus guarantees streak-free all-around cleaning in every application! The HD-ready resolution and 12 high-power LEDs deliver high-resolution video footage for quality control, documentation, and preliminary inspection. Data management is fully integrated into the system through the WiFi interface and connection to the enz® Cloud. All your manholes and channels are automatically mapped on Google Maps with the videos. The enz® Camera Nozzle, which is simple, fast, and robust, increases productivity without any negative impact on the cleaning performance or quality. The corresponding app for [iOS](#) and [Android](#) is available for download.

Accessories



**Skid guidance for eBulldog
100.2004i**



**Set of extension
skids for eBulldog
100.2005**

**eBulldog Rotating
Nozzle2.4"
402.060iB**





Wiesel ½ to 1"NPT

Applications: House connections and small pipes with limestone, soap and grease build-up. General pipe cleaning

Manufacturer Number	Westvac Number	Stocking WHS	Connecting Thread	Pipe Range	Pipe Flow Range	Rotating Jets	Thrust Jets	Angle	Front Jets	Angle	Dimensions	Weight
06 04 01 01 4 06 ZZ	WV-WIESEL-050		1/2 NPT	3-8"	13-26 GPM	None	6	20 & 30 Degree	Optional	n/a	2.12" X 1.49"	.53 lbs
06 04 01 01 4 08 ZZ			1/2 NPT	3-8"	13-26 GPM	None	8	20 & 30 Degree	Optional	n/a	2.12" X 1.49"	.53 lbs
06 04 02 01 5 08 ZZ	WV-WIESEL-075		3/4 NPT	3-10"	26-66 GPM	None	8	20 & 30 Degree	Optional	n/a	2.17" X 1.67"	.66 lbs
06 04 02 01 5 10 ZZ			3/4 NPT	3-10"	26-66 GPM	None	10	20 & 30 Degree	Optional	n/a	2.17" X 1.67"	.66 lbs
06 04 03 01 6 08 ZZ	WV-WIESEL-100		1 NPT	4-12"	40-90 GPM	None	8	20 & 30 Degree	Optional	n/a	2.75" X 2.08"	1.36 lbs
06 04 03 01 6 10 ZZ			1 NPT	4-12"	40-90 GPM	None	10	20 & 30 Degree	Optional	n/a	2.75" X 2.08"	1.36 lbs

The IBG gutter nozzle, made of stainless steel, is especially suitable for the cleaning of gutters, which are open upwards. It has the Hydratech-water-management which ensures an optimum traction and clearing capacity.

Rondo ½ to 1 ½ "NPT

Applications: Removal of soap, grease and bitumen. Preparation before video inspection



Manufacturer Number	Description	Westvac Number	Stocking WHS	Connecting Thread	Slot Area Cu In	Pipe Range	Pipe Flow Range	Rotating Jets	Thrust Jets	Angle Degrees	Front Jets	Angle	Dimensions
053 04 01 01 4 03 15	Rondo 30			1/2 NPT	0.0055	2-5"	10-26 GPM	None	3 x M4	15	None	n/a	1.69" x 1.38"
03 00 01 01 0 05 45	Rondo 40			1/2 NPT	0.0093	3-6"	13-26 GPM	None	3 x M6	15	None	n/a	2.52" x 1.50"
03 00 01 01 0 07 45	Rondo 40			1/2 NPT	0.0116	3-6"	15-26 GPM	None	3 x M6	15	None	n/a	2.52" x 1.50"
03 00 01 01 0 09 45	Rondo 40	WV-RONDO40-050		1/2 NPT	0.0148	3-6"	21-26 GPM	None	3 x M6	15	None	n/a	2.52" x 1.50"
03 00 02 01 5 09 45	Rondo 50			3/4 NPT	0.0149	4-8"	34-66 GPM	None	3	15	None	n/a	2.72" x 1.89"
03 00 02 01 5 13 45	Rondo 50	WV-RONDO50-075		3/4 NPT	0.0198	4-8"	42-66 GPM	None	3	15	None	n/a	2.72" x 1.89"
03 00 02 01 5 16 45	Rondo 50			3/4 NPT	0.0248	4-8"	53-66 GPM	None	3	15	None	n/a	2.72" x 1.89"
03 00 03 01 6 18 45	Rondo 60			1" NPT	0.0279	6-12"	> 40 GPM	None	3	15	None	n/a	3.58" x 2.28"
03 00 03 01 6 27 45	Rondo 60	WV-RONDO60-100		1" NPT	0.0419	6-12"	> 40GPM	None	3	15	None	n/a	3.58" x 2.28"
03 00 04 01 7 27 45	Rondo 90			1 1/4 NPT	0.0419	10-16"	> 87 GPM	None	3	15	None	n/a	5.12" X 3.46"
03 00 04 01 7 36 45	Rondo 90			1 1/4 NPT	0.0558	10-16"	> 106 GPM	None	3	15	None	n/a	5.12" X 3.46"
03 00 06 01 8 36 45	Rondo 90			1 1/4 NPT	0.0558	10-16"	> 132 GPM	None	3	15	None	n/a	5.12" X 3.46"

The Rondo series nozzles perform with the same cleaning results of the rotating nozzles, without losing the impact force due to the spinning effect. Its fan-jets always work at 360 degree uniformly throughout the inside of the pipe, cutting and removing hard deposits encrusted at the wall of the pipe. Note: With use of a guide cage improved performance can be achieved.

HW35/70/75/100/110 ½ to 1 ¼ "NPT

Applications: General Pipe Cleaning. Sand and Sludge Removing



Manufacturer Number	Description	Westvac Number	Stocking WHS	Connecting Thread	Pipe Range	Flow Range	Rotating Jets	Thrust Jets	Angle Degrees	Front Jets	Angle	Dimensions	Weight
53 01 01 01 4 06 10	HW35			1/2 NPT	2-6"	10-20 GPM	None	6 X M4	10	None	n/a	1.96" x 1.37"	0.05 lbs
06 03 01 01 4 YY 06	HW70			1/2 NPT	4-6"	13-26 GPM	None	6/8 X M10	6 & 12	1 x M10	n/a	3.93" x 2.67"	2.42 lbs
06 03 01 02 5 YY 06	HW70	WV-HW70-075		3/4 NPT	4-12"	26-66 GPM	None	6/8 X M10	6 & 12	1 x M10	n/a	3.93" x 2.67"	2.42 lbs
06 03 01 03 6 YY 06	HW70			1" NPT	6-16"	> 40 GPM	None	6/8 X M10	6 & 12	1 x M10	n/a	3.93" x 2.67"	2.20 lbs
06 03 02 01 6 08 06	HW75	WV-HW75-100		1" NPT	4-16"	> 40 GPM	None	8 X M10 X 1	6 & 12	None	n/a	5.91" x 2.87"	5.70 lbs
06 03 02 01 6 08 12	HW75			1" NPT	4-16"	> 40 GPM	None	8 X M10 X 1	12 & 18	None	n/a	5.91" x 2.87"	5.70 lbs
06 03 02 02 6 18 05	HW75			1" NPT	4-16"	> 40 GPM	None	18 X M8	5	None	n/a	5.91" x 2.87"	5.70 lbs
06 03 03 01 6 08 06	HW100			1" NPT	8-24"	> 52 GPM	None	8 X 1/4"	6 & 12	None	n/a	8.30" x 3.86"	11.46 lbs
06 03 03 01 6 10 06	HW100			1" NPT	8-24"	> 52 GPM	None	10 X 1/4"	6 & 12	None	n/a	8.30" x 3.86"	11.46 lbs
06 03 06 01 7 12 12	HW110			1 1/4 NPT	12-32"	> 80 GPM	None	12 X 1/4"	12 & 18	None	n/a	8.50" x 4.25"	17.42 lbs
06 03 06 01 7 16 22	HW110			1 1/4 NPT	12.32"	> 92 GPM	None	16 X M10 X 1	20	None	n/a	8.50" x 4.25"	17.42 lbs

These high efficiency nozzles are manufactured for highly soiled pipes with a high feed performance, and set new standards in sewer cleaning. The high efficiency makes it possible to transform water energy in to a cleaning , and forward drive output. Because of the enclosed nozzle inserts and the use of hardened alloy stell the service life is very long.

AVANTI ½ to 1" NPT

Applications: General Pipe Cleaning. Sand and Sludge Removing



Manufacturer Number	Description	Westvac Number	Stocking WHS	Connecting Thread	Pipe Range	Flow Range	Rotating Jets	Thrust Jets	Angle Degrees	Front Jets	Angle	Dimensions	Weight
02 03 01 01 4 03 04	Avanti			1/2 NPT	3-6"	16-26 GPM	3 x M6	3 X M6	15	None	n/a	3.19" X 1.54"	0.79 lbs
02 03 01 02 4 03 03	Avanti Carbide Tip			1/2 NPT	3-6"	16-26 GPM	3 x M6	3 X M6	15	None	n/a	3.19" X 1.54"	0.79 lbs
02 03 02 01 5 04 06	Avanti			3/4 NPT	4-8"	26-66 GPM	4 X M6	6 X M6	15	None	n/a	4.76" X 1.93"	2.42 lbs
02 03 02 02 5 04 06	Avanti Carbide Tip			3/4 NPT	4-8"	26-66 GPM	4 X M6	6 X M6	15	None	n/a	4.76" X 1.93"	2.42 lbs
02 03 03 01 6 04 06	Avanti	WV-AVANTI-100		1" NPT	5-12"	> 52 GPM	4 X M8	6 X M8	15	None	n/a	4.88" X 2.36"	4.40 lbs
02 03 03 02 6 04 06	Avanti Carbide Tip			1" NPT	5-12"	> 52 GPM	4 X M8	6 X M8	15	None	n/a	4.88" X 2.36"	4.40 lbs

The Avanti nozzle was especially developed for removal of ice in frozen waste water pipes. Of course, it can also remove comparable deposits, such as ease of roots, mineral deposits, etc. The milling head is made of hardened stainless steel and provides a long life-time.



Standard Chain Rotor ½ to 1"NPT

Applications: Removal of Roots, Incrustations and deposits. It is also popular for roughening before rehabilitation work

Manufacturer Number	Description	Westvac Number	Stocking WHS	Connecting Thread	Pipe Range	Flow Range	Rotating Jets	Thrust Jets	Angle Degrees	Front Jets	Angle	Dimensions	Weight
04 02 02 01 4 03 03	Std Chain			1/2 NPT	4-8"	16-26 GPM	3XM8	3XM8	15	None	n/a	4.92 X 2.16"	2.87 lbs
04 02 03 01 5 03 06	Std Chain			3/4 NPT	4-8"	16-66 GPM	3XM8	6XM8	15	None	n/a	4.92 X 2.16"	2.87 lbs
04 02 04 01 6 03 06	Std Chain	WV-STDCHAIN-100		1" NPT	6-12"	> 54 GPM	3XM8	6XM8	15	None	n/a	5.90 X 2.76"	5.51 lbs

Note: Centre cutters are available for all standard chain rotors. It is recommended in combination with guide cage. Only used with link chain

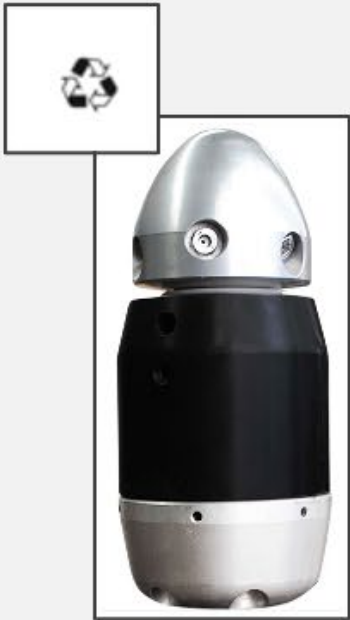
Combi Chain Rotor ¾ to 1 ¼" NPT

Applications: Removal of Roots, Incrustations and deposits. It is also popular for roughening before rehabilitation work



Manufacturer Number	Description	Westvac Number	Stocking WHS	Connecting Thread	Pipe Range	Flow Range	Rotating Jets	Thrust Jets	Angle Degrees	Front Jets	Angle	Dimensions	Weight
04 04 02 01 5 04 03	Combi Chain	WV-COMBI-075		3/4 NPT	6-16"	34-66 GPM	3XM6	3XM10	15	None	n/a	5.71" x 2.68"	5.07 lbs
04 04 03 01 6 04 03	Combi Chain	WV-COMBI-100		1" NPT	6-16"	> 53 GPM	3XM6	3XM10	15	None	n/a	5.71" x 2.68"	5.07 lbs
04 04 04 01 7 04 06	Combi Chain			1 1/4 NPT	8-24"	> 92 GPM	4XM8	6X1/4"	15	None	n/a	6.10" X 7.40"	18.74 lbs

Note: Combi Chain Rotors can be used with different types of chains, bicycle chains, link chains or milling wheels



RotoMax DEK 50/80/110 ½ to 1 ¼" NPT

Applications:

Manufacturer Number	Description	Westvac Number	Stocking WHS	Connecting Thread	Pipe Range	Flow Range	Rotating Jets	Thrust Jets	Angle Degrees	Front Jets	Angle	Dimensions	Weight
02 01 01 01 4 04 06	RotoMax 50			1/2 NPT	3-10"	18-26 GPM	6XM6	6XM6	15	None	n/a	4.29" x 1.89"	2.14 lbs
02 01 01 03 5 04 06	RotoMax 50	WV-ROTOMAX50-075		3/4 NPT	3-12"	26-66 GPM	6XM6	6XM6	15	None	n/a	4.29" x 1.89"	2.14 lbs
02 01 02 01 9 00 00	RotoMax 80	WV-ROTOMAX80-100		1" NPT	8-24"	> 66 GPM	6XM10	6XM10X1	?	None	n/a	9.45" X 5.32"	11.91 lbs
02 01 03 01 9 00 00	RotoMax 110			1 1/4 NPT	10-24"	> 92 GPM	6XM10	6XM10X1	?	None	n/a	10.35" X 5.71"	16.09 lbs



RotoMax 100 1" NPT

Applications: Loosening, Crushing, Milling & flushing out sedimentations, incrustations, root ingrowths & crossing pipes to the use of complex jacking cutting & grinding tools in case of protruding obstacles or deformations

Manufacturer Number	Westvac Number	Stocking WHS	Connecting Thread	Pipe Range	Flow Range	Rotating Jets	Thrust Jets	Angle	Front Jets	Angle	Dimensions	Weight
20107100	WV-ROTOMAX100-100		1" NPT	6-40"	?	YES	3XM6 6XM10X1	30 & 25	None	n/a	10.43" x 5.32"	12.13 lbs

The RotoMax is a universally applicable rotating sewer cleaning nozzle with easy and quick exchangeable tool heads. The included wear-free brake ensures consistent, non-overriding milling characteristics. It also protects bearings for long service life. The Built-in Bumper at the head of the nozzle ensures long service life.

Advantages

- Multi Head with Flex-Jet Equipment
- High water flow without pressure loss
- Removable skid
- Eddy current magnetic brake system
- 3XM6 Head 6XM10X1 25 Degree Thrust Nozzle

Size	Orifice Diameter		Pressure (PSI)																												
	Inches	mm	5	10	20	30	40	100	250	500	750	1000	1250	1500	1750	2000	2250	2500	2750	3000	3250	3500	3750	4000	4500	5000	5500	6000	6500	7000	7500
1	0.026	0.66	0.04	0.05	0.07	0.09	0.10	0.16	0.25	0.35	0.43	0.50	0.56	0.61	0.66	0.71	0.74	0.79	0.83	0.87	0.90	0.94	0.97	1.00	1.06	1.12	1.17	1.22	1.27	1.32	1.37
1.5	0.031	0.79	0.05	0.08	0.11	0.13	0.15	0.24	0.38	0.53	0.65	0.75	0.84	0.92	0.99	1.06	1.11	1.19	1.24	1.30	1.35	1.40	1.45	1.50	1.59	1.68	1.76	1.84	1.91	1.98	2.05
2	0.034	0.86	0.07	0.10	0.14	0.17	0.20	0.32	0.50	0.71	0.87	1.00	1.12	1.22	1.32	1.41	1.48	1.58	1.66	1.73	1.80	1.87	1.94	2.00	2.12	2.24	2.35	2.45	2.55	2.65	2.74
2.5	0.039	0.99	0.09	0.13	0.18	0.22	0.25	0.40	0.63	0.88	1.08	1.25	1.40	1.53	1.65	1.77	1.85	1.98	2.07	2.17	2.25	2.34	2.42	2.50	2.65	2.80	2.93	3.06	3.19	3.31	3.42
3	0.043	1.09	0.11	0.15	0.21	0.26	0.30	0.47	0.75	1.06	1.30	1.50	1.68	1.84	1.98	2.12	2.22	2.37	2.49	2.60	2.70	2.81	2.90	3.00	3.18	3.35	3.52	3.67	3.82	3.97	4.11
3.5	0.048	1.22	0.12	0.18	0.25	0.30	0.35	0.55	0.88	1.24	1.52	1.75	1.96	2.14	2.32	2.47	2.60	2.77	2.90	3.03	3.15	3.27	3.39	3.50	3.71	3.91	4.10	4.29	4.46	4.63	4.79
4	0.050	1.27	0.14	0.20	0.28	0.35	0.40	0.63	1.00	1.41	1.73	2.00	2.24	2.45	2.65	2.83	2.97	3.16	3.32	3.46	3.61	3.74	3.87	4.00	4.24	4.47	4.69	4.90	5.10	5.29	5.48
4.5	0.055	1.40	0.16	0.23	0.32	0.39	0.45	0.71	1.13	1.59	1.95	2.25	2.52	2.76	2.98	3.18	3.34	3.56	3.73	3.90	4.06	4.21	4.36	4.50	4.77	5.03	5.28	5.51	5.74	5.95	6.16
5	0.057	1.45	0.18	0.25	0.35	0.43	0.50	0.79	1.25	1.77	2.17	2.50	2.80	3.06	3.31	3.54	3.71	3.95	4.15	4.33	4.51	4.68	4.84	5.00	5.30	5.59	5.86	6.12	6.37	6.61	6.85
5.5	0.060	1.52	0.19	0.28	0.39	0.48	0.55	0.87	1.38	1.94	2.38	2.75	3.07	3.37	3.64	3.89	4.08	4.35	4.56	4.76	4.96	5.14	5.33	5.50	5.83	6.15	6.45	6.74	7.01	7.28	7.53
6	0.062	1.57	0.21	0.30	0.42	0.52	0.60	0.95	1.50	2.12	2.60	3.00	3.35	3.67	3.97	4.24	4.45	4.74	4.97	5.20	5.41	5.61	5.81	6.00	6.36	6.71	7.04	7.35	7.65	7.94	8.22
6.5	0.064	1.63	0.23	0.33	0.46	0.56	0.65	1.03	1.63	2.30	2.81	3.25	3.63	3.98	4.30	4.60	4.82	5.14	5.39	5.63	5.86	6.08	6.29	6.50	6.89	7.27	7.62	7.96	8.29	8.60	8.90
7	0.067	1.70	0.25	0.35	0.49	0.61	0.70	1.11	1.75	2.47	3.03	3.50	3.91	4.29	4.63	4.95	5.19	5.53	5.80	6.06	6.31	6.55	6.78	7.00	7.42	7.83	8.21	8.57	8.92	9.26	9.59
7.5	0.071	1.80	0.27	0.38	0.53	0.65	0.75	1.19	1.88	2.65	3.25	3.75	4.19	4.59	4.96	5.30	5.56	5.93	6.22	6.50	6.76	7.02	7.26	7.50	7.95	8.39	8.79	9.19	9.56	9.92	10.27
8	0.072	1.83	0.28	0.40	0.57	0.69	0.80	1.26	2.00	2.83	3.46	4.00	4.47	4.90	5.29	5.66	5.93	6.32	6.63	6.93	7.21	7.48	7.75	8.00	8.49	8.94	9.38	9.80	10.20	10.58	10.95
8.5	0.074	1.88	0.30	0.43	0.60	0.74	0.85	1.34	2.13	3.01	3.68	4.25	4.75	5.21	5.62	6.01	6.30	6.72	7.05	7.36	7.66	7.95	8.23	8.50	9.02	9.50	9.97	10.41	10.84	11.24	11.64
9	0.076	1.93	0.32	0.45	0.64	0.78	0.90	1.42	2.25	3.18	3.90	4.50	5.03	5.51	5.95	6.36	6.67	7.12	7.46	7.79	8.11	8.42	8.71	9.00	9.55	10.06	10.55	11.02	11.47	11.91	12.32
9.5	0.078	1.98	0.34	0.48	0.67	0.82	0.95	1.50	2.38	3.36	4.11	4.75	5.31	5.82	6.28	6.72	7.05	7.51	7.88	8.23	8.56	8.89	9.20	9.50	10.08	10.62	11.14	11.64	12.11	12.57	13.01
10	0.080	2.03	0.35	0.50	0.71	0.87	1.00	1.58	2.50	3.54	4.33	5.00	5.59	6.12	6.61	7.07	7.42	7.91	8.29	8.66	9.01	9.35	9.68	10.00	10.61	11.18	11.73	12.25	12.75	13.23	13.69
11	0.083	2.11	0.39	0.55	0.78	0.95	1.10	1.74	2.75	3.89	4.76	5.50	6.15	6.74	7.28	7.78	8.16	8.70	9.12	9.53	9.92	10.29	10.65	11.00	11.67	12.30	12.90	13.47	14.02	14.55	15.06
12	0.087	2.21	0.42	0.60	0.85	1.04	1.20	1.90	3.00	4.24	5.20	6.00	6.71	7.35	7.94	8.49	8.90	9.49	9.95	10.39	10.82	11.22	11.62	12.00	12.73	13.42	14.07	14.70	15.30	15.87	16.43
12.5	0.089	2.26	0.44	0.63	0.88	1.08	1.25	1.98	3.13	4.42	5.41	6.25	6.99	7.65	8.27	8.84	9.27	9.88	10.36	10.83	11.27	11.69	12.10	12.50	13.26	13.98	14.66	15.31	15.93	16.54	17.12
13	0.091	2.31	0.46	0.65	0.92	1.13	1.30	2.06	3.25	4.60	5.63	6.50	7.27	7.96	8.60	9.19	9.64	10.28	10.78	11.26	11.72	12.16	12.59	13.00	13.79	14.53	15.24	15.92	16.57	17.20	17.80
14	0.093	2.36	0.49	0.70	0.99	1.21	1.40	2.21	3.50	4.95	6.06	7.00	7.83	8.57	9.26	9.90	10.38	11.07	11.61	12.12	12.62	13.10	13.56	14.00	14.85	15.65	16.42	17.15	17.85	18.52	19.17
15	0.096	2.44	0.53	0.75	1.06	1.30	1.50	2.37	3.75	5.30	6.50	7.50	8.39	9.19	9.92	10.61	11.12	11.86	12.44	12.99	13.52	14.03	14.52	15.00	15.91	16.77	17.59	18.37	19.12	19.84	20.54
20	0.109	2.77	0.71	1.00	1.41	1.73	2.00	3.16	5.00	7.07	8.66	10.00	11.18	12.25	13.23	14.14	14.83	15.81	16.58	17.32	18.03	18.71	19.36	20.00	21.21	22.36	23.45	24.49	25.50	26.46	27.39
25	0.125	3.18	0.88	1.25	1.77	2.17	2.50	3.95	6.25	8.84	10.83	12.50	13.98	15.31	16.54	17.68	18.54	19.76	20.73	21.65	22.53	23.39	24.21	25.00	26.52	27.95	29.32	30.62	31.87	33.07	34.23
30	0.141	3.58	1.06	1.50	2.12	2.60	3.00	4.74	7.50	10.61	12.99	15.00	16.77	18.37	19.84	21.21	22.25	23.72	24.87	25.98	27.04	28.06	29.05	30.00	31.82	33.54	35.18	36.74	38.24	39.69	41.08
35	0.152	3.86	1.24	1.75	2.47	3.03	3.50	5.53	8.75	12.37	15.16	17.50	19.57	21.43	23.15	24.75	25.96	27.67	29.02	30.31	31.55	32.74	33.89	35.00	37.12	39.13	41.04	42.87	44.62	46.30	47.93
40	0.156	3.96	1.41	2.00	2.83	3.46	4.00	6.32	10.00	14.14	17.32	20.00	22.36	24.49	26.46	28.28	29.66	31.62	33.17	34.64	36.06	37.42	38.73	40.00	42.43	44.72	46.90	48.99	50.99	52.92	54.77
45	0.173	4.39	1.59	2.25	3.18	3.90	4.50	7.12	11.25	15.91	19.49	22.50	25.16	27.56	29.76	31.82	33.37	35.58	37.31	38.97	40.56	42.09	43.57	45.00	47.73	50.31	52.77	55.11	57.36	59.53	61.62
50	0.172	4.37	1.77	2.50	3.54	4.33	5.00	7.91	12.50	17.68	21.65	25.00	27.95	30.62	33.07	35.36	37.08	39.53	41.46	43.30	45.07	46.77	48.41	50.00	53.03	55.90	58.63	61.24	63.74	66.14	68.47
55	0.179	4.55	1.94	2.75	3.89	4.76	5.50	8.70	13.75	19.45	23.82	27.50	30.75	33.68	36.38	38.89	40.79	43.48	45.60	47.63	49.58	51.45	53.25	55.00	58.34	61.49	64.49	67.36	70.11	72.76	75.31
60	0.188	4.78	2.12	3.00	4.24	5.20	6.00	9.49	15.00	21.21	25.98	30.00	33.54	36.74	39.69	42.43	44.50	47.43	49.75	51.96	54.08	56.12	58.09	60.00	63.64	67.08	70.36	73.48	76.49	79.37	82.16
70	0.281	7.14	2.47	3.50	4.95	6.06	7.00	11.07	17.50	24.75	30.31	35.00	39.13	42.87	46.30	49.50	51.91	55.34	58.04	60.62	63.10	65.48	67.78	70.00	74.25	78.26	82.08	85.73	89.23	92.60	95.85
80	0.297	7.54	2.83	4.00	5.66	6.93	8.00	12.65	20.00	28.28	34.64	40.00	44.72	48.99	52.92	56.57	59.33	63.25	66.33	69.28	72.11	74.83	77.46	80.00	84.85	89.44	93.81	97.98	101.98	105.83	109.54
90	0.316	8.03	3.18	4.50	6.36	7.79	9.00	14.23	22.50	31.82	38.97	45.00	50.31	55.11	59.53	63.64	66.75	71.15	74.62	77.94	81.12	84.19	87.14	90.00	95.46	100.62	105.53	110.23	114.73	119.06	123.24
105	0.335	8.50	3.71	5.25	7.42	9.09	10.50	16.60	26.25	37.12	45.47	52.50	58.70	64.30	69.45	74.25	77.87	83.01	87.06	90.93	94.65	98.22	101.67	105.00	111.37	117.39	123.12	128.60	133.85	138.90	143.78

PRESSURE LOSS (PSI PER 100 FEET OF HOSE)												
Water Flow in US Gal./Min	Actual Internal Diameter (inches)											
	1/4	5/16	3/8	1/2	5/8	3/4	1	1 1/4	1 1/2	2	2 1/2	3
0.5	16	5	2									
1	54	20	7	2								
2	180	60	25	6	2							
3	380	120	50	13	4	2						
4		220	90	24	7	3						
5		320	130	34	10	4						
6			220	52	16	7	1					
8			300	80	25	10	2	1				
10				120	38	14	3	2	1			
15				250	80	30	7	4	2			
20					120	50	12	6	3	1		
25					200	76	19	9	4	1		
40					410	162	42	15	6	2	1	
60							93	32	13	3	1	
70						370	126	43	18	4	1	1
80								55	23	5	2	1
90								68	28	7	2	1
100								82	34	8	3	1
125								124	51	12	4	2
150									72	18	7	2



Lateral Motor Thrust Bearing

Manufacturer Number	Size/Description	Westvac Number	Stocking WHS
950-209	Lateral Motor Brg		



Lateral Skid Extensions - (sold individually)

Manufacturer Number	Size/Description	Westvac Number	Stocking WHS
950-226	6" Lateral Skid		
950-228	8" Lateral Skid		
950-230	10" Lateral Skid		
950-232	12" Lateral Skid		

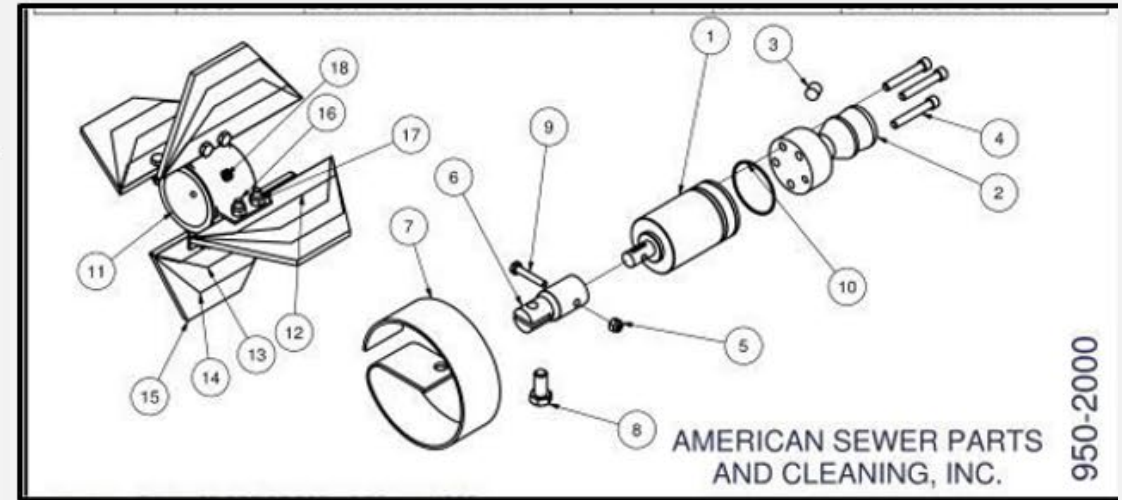


Flex Blade Chuck Hub Lateral

Manufacturer Number	Size/Description	Westvac Number	Stocking WHS
960-200	5/8 Lat Flex Cutter Chuck	UE-960-200	

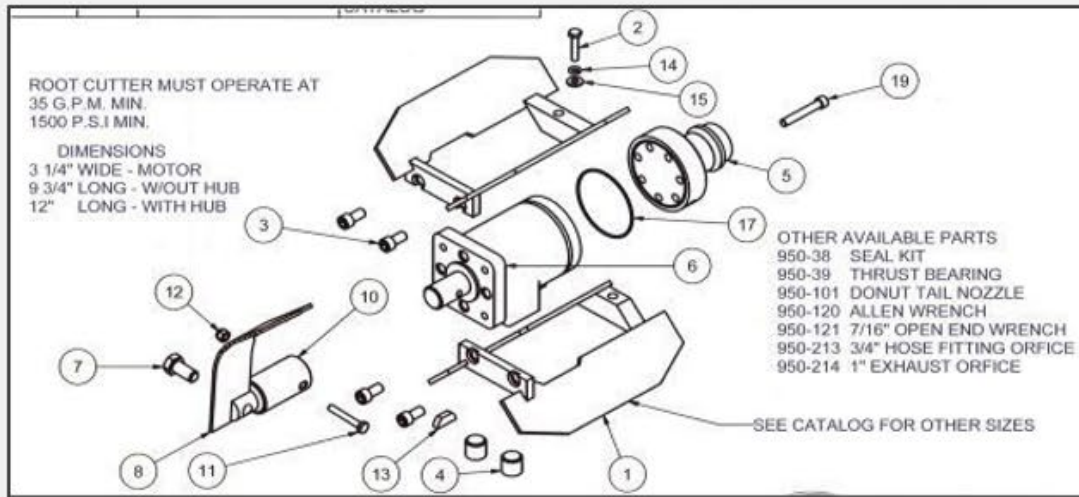


Lateral Motor Parts Breakdown



Ref	Manufacturer Number	Size/Description	Westvac Number	Stocking WHS
1	950-219	Lateral Motor w/Tail	UE-950-219	
1	950-210	Lateral Motor Only		
2	950-212	Lateral Tail Nozzle		
3	950-213/214	Exhaust Orifice		
4	950-215	Bolts 5/16-24x2SOC HD		
5	950-31	Nut 1/4-20 Nylock		
6	950-220	Lateral Hub 5/8"	UE-950-220	
7	See Saw Blades	Saw Blade		
8	950-28	Bolt 1/2-13x1" Hex Head		
9	950-30	Bolt 1/4-20x1 1/2 Hex Head HD		
10	950-300	Seal Kit	UE-950-300	
11	950-240	Skid Collar		
12	See Skid Extensions	Lateral Skid Extensions		
13	See Skid Extensions	Lateral Skid Extensions		
14	See Skid Extensions	Lateral Skid Extensions		
15	See Skid Extensions	Lateral Skid Extensions		
16	950-245	Bolt 5/16-18x1 Hex Head		
17	950-246	Nut 5/16-18 Nylock		
18	950-247	Set Screw 3/8-18 x 1/2		

Mainline Motor Parts Breakdown



Mainline Thrust Bearing

Manufacturer Number	Size/Description	Westvac Number	Stocking WHS
950-39	Mainline Thrust Bearing	UE-950-39	

Mainline Skid Assy



Manufacturer Number	Size/Description	Westvac Number	Stocking WHS
950-103	6" Skid		
950-104	8" Skid		
950-105	10" Skid	UE-950-105	
950-106	12" Skid	UE-950-106	
950-115	15" Skid		
950-118	18" Skid		
950-1215	21" Skid		
950-124	24" Skid		

Note: Skid Also Available w/Wheels

Ref	Manufacturer Number	Size/Description	Westvac Number	Stocking WHS
1	See Mainline Skid Assy			
2	950-25	Bolt 1/4-20 x 3/4		
3	950-26	Bolt 3/8-16 x 3/4		
4	950-27	1/2 Pipe Plug		
5	950-100	Tail Nozzle	UE-950-100	
6	950-110	Motor	UE-950-110	
	950-111S	Motor w Tail for Skid	UE-950-111S	
	950-111D	Motor w Tail for Donut		
	950-113	Motor Flange	UE-950-113	
7	950-28	Bolt 1/2-13 x 1		
8	See Saw Blades			
10	950-107	Hub	UE-950-107	
11	950-30	Bolt 1/4-20 x 3/4		
12	950-31	Nut 1/4-20 Nylok		
13	950-32	Key		
14	10-0250-100	Washer 1/4 lock		
15	10-0250-011	Washer 1/4 Flat		

Donut Assy

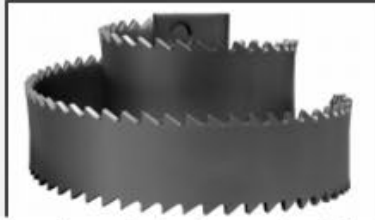
Manufacturer Number	Size/Description	Westvac Number	Stocking WHS
950-108	Donut Assy Front	UE-950-108	
950-109	Donut Assy Rear	UE-950-109	



Mainline Flex Blade Chuck Hub

Manufacturer Number	Size/Description	Westvac Number	Stocking WHS
960-100	1" Mainline Flex Cutter Chuck	UE-960-100	18G05B

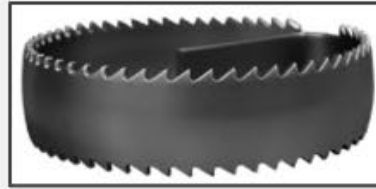
Supreme Saw Blade – Spiral



Manufactured spring style characteristics allow for minimal breakage when cutting through inconsistent surfaces or misaligned material / matter. Is also perfect for cutting heavy roots or grease clogs in pipeline by allowing the operator to take small bites at a time to remove the obstruction. The spiral blade is also designed to ride over offset pipe more easily than flat blades which grab obstructions more aggressively. Made in the USA.

Manufacturer Number	Size/Description	Westvac Number	Stocking WHS
7600-4	4" Spiral		
7600-6	6" Spiral	UE-7600-6	
7600-8	8" Spiral	UE-7600-8	
7600-10	10" Spiral	UE-7600-10	
7600-12	12" Spiral	UE-7600-12	
7600-15	15" Spiral	UE-7600-15	
7600-18	18" Spiral	UE-7600-18	

Supreme Saw Blade – Concave

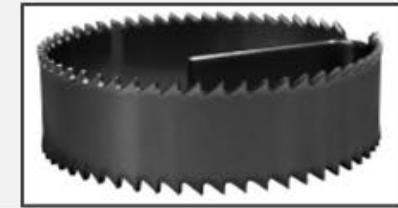


The concave design keeps the saw teeth off the side of the pipe to provide longer saw life for cutting or descaling relined or plastic pipe. These blades are suitable for general root cutting in moderate root conditions. These blades are intended for use with hydraulic root cutters and sectional (continuous) rod rodding machines

Manufacturer Number	Size/Description	Westvac Number	Stocking WHS
7600C-4	4" Concave		
7600C-6	6" Concave	UE-7600C-6	
7600C-8	8" Concave	UE-7600C-8	
7600C-10	10" Concave	UE-7600C-10	
7600C-12	12" Concave	UE-7600C-12	
7600C-15	15" Concave		
7600C-18	18" Concave		

2" x .156" tempered spring steel 44-47 HRC

Supreme Saw Blade – Flat



These blades are best used for general root cutting in moderate root conditions.

Manufacturer Number	Size/Description	Westvac Number	Stocking WHS
7600F-4	4" Flat	UE-7600F-4	
7600F-6	6" Flat	UE-7600C-6	
7600F-8	8" Flat	UE-7600C-8	
7600F-10	10" Flat	UE-7600C-10	
7600F-12	12" Flat	UE-7600C-12	
7600F-15	15" Flat		
7600F-18	18" Flat		
7600F-21	21" Flat		
7600F-24	24" Flat		

Flex Blades

The Flex / Curved heavy duty cutter blades are great for moderate roots, scale and grease. They are supplied three per chuck in a triangular position that allows constant contact with pipe walls as the hydraulic root cutter rotates. This allows a complete scouring of the pipe wall. Sizes are provided from 4"-18" in sets of three blades.

Manufacturer Number	Size/Description	Westvac Number	Stocking WHS
7700-4	4"Blades (3 Pack)	UE-7700-4	
7700-6	6"Blades (3 Pack)	UE-7700-6	
7700-8	8"Blades (3 Pack)	UE-7700-8	
7700-10	10"Blades (3 Pack)	UE-7700-10	
7700-12	12"Blades (3 Pack)	UE-7700-12	
7700-15	15"Blades (3 Pack)	UE-7700-15	
7700-18	18"Blades (3 Pack)		

Spiral Carbide With Carbide Ware Pads

Manufacturer Number	Size/Description	Westvac Number	Stocking WHS
7600-6CW	6" SPL W CARB&WP		
7600-8CW	8" SPL W CARB&WP		
7600-10CW	10" SPL W CARB&WP		
7600-12CW	12" SPL W CARB&WP		
7600-15CW	15" SPL W CARB&WP		
7600-18CW	18" SPL W CARB&WP		



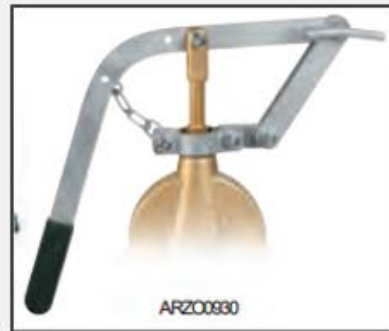
Heated & Non Heated Stem Gate Valves

Manufacturer Number	Description	Westvac Number	Stocking WHS
ARZO-0041-100-000	4" Valve	WV-ARZO-0041-100-000	
ARZO-0043-100-000	4" Heated Valve		
ARZO-0041-150-000	6" Valve	WV-ARZO-0041-150-000	
ARZO-0043-150-000	6" Heated Valve		



Pneumatic Cylinder with Spring for Stem Valves

Manufacturer Number	Description	Westvac Number	Stocking WHS
ARZO-0580-100-000	4" Valve	WV-ARZO-0580-100-000	
ARZO-0580-150-000	6" Valve	WV-ARZO-0580-150-000	
ARZO-0580-200-000	8" Valve		



Stem Valve Manual Levers

Manufacturer Number	Description	Size	Westvac Number	Stocking WHS
ARZO0929.100.000	Upward Lever	4-6		
ARZO0929.200.000		8		
ARZO0930.100.000	Downward Lever	4-6		
ARZO0930.200.000		8		

Heated & Non Heated Stem Gate Valves Replacement Parts



Ref No	Manufacturer Number	Description	Size	Westvac Number	Stocking WHS
1	FOZO 0041.100.001	Brass Body 41	4		
	FOZO 0041.150.001		6		
	FOZO 0043.100.001	Brass Body 43	4		
	FOZO 0043.150.001		6		
2	GGUA 0040.100.004	Gasket	4		
	GGUA 0040.150.004		6		
3	SEMI 0040.100.002	Gate Disc	4		
	SEMI 0040.150.002		6		
4	SAZO 0040.100.011	Locking Clamp	4-6		
5	TOZO 0040.100.003	Valve Stem	4		
	TOZO 0040.150.003		6		
6	FOZO 0040.100.005	Valve Head	4		
	FOZO 0040.150.005		6		
7	VTAC 0020.100.009	M8x16mm screw	4-6		
8	SPZO 0040.100.006	Stem Gasket	4-6		
9	TOZO 0040.100.007	M30x2MM Nut	4-6		
10	FOZO 0040.100.008	Brass Fork	4-6		



Heated & Non Heated Lever Gate Valves

Manufacturer Number	Size	Westvac Number	Stocking WHS
ARZO-0031-080-000	3" Valve	WV-ARZO-0031-080-000	
ARZO-0031-100-000	4" Valve	WV-ARZO-0031-100-000	
ARZO-0033-100-000	4" Heated Valve		
ARZO-0031-150-000	6" Valve	WV-ARZO-0031-150-000	
ARZO-0033-150-000	6" Heated Valve	WV-ARZO-0033-150-000	

Ref No	Manufacturer Number	Description	Size	Westvac Number	Stocking WHS
1	FOZO-0031-080-001	Brass Body	3		
	FOZO-0031-100-001		4		
	FOZO-0031-150-001		6		
	FOZO-0033-100-001	Brass Body Htd	4		
	FOZO-0033-100-001		6		
2	VTAC 0030.050.008	M6X12MM Screw	2		
	VTAC 0030.100.008	M8X16MM Screw	2-6		
3	FOZO0030.050.012	Brass Handle	2		
	SAZO 0030.080.015	Zinc Handle	3-6		
	SAZO 0030.100.015				
4	TOZO 0030.050.007	3/4 Brass Nut	2		
	TOZO 0040.100.007	M30x2MM Nut	3		
	TOZO 0030.100.007	Brass Nut	4-6		
5	SPZO 0030.050.007	Polymer Gasket	2		
	SPZO 0040.100.006		3		
	SPZO 0030.100.006		4-6		
6	TOZO 0030.050.010	Handle Pin			
	TOZO 0030.080.010				
	TOZO 0030.100.010				
	TOZO 0030.150.10A				

Heated & Non Heated Lever Gate Valve Replacement Parts



Ref No	Manufacturer Number	Description	Size	Westvac Number	Stocking WHS
7a	SOZO 0030.050.02A	Male Disc	2		
	SOZO 0030.080.02A		3		
	SOZO 0030.100.02A		4		
	SOZO 0030.150.02A		6		
7b	SOZO 0030.050.02B	Female Disc	2		
	SOZO 0030.080.02B		3		
	SOZO 0030.100.02B		4		
	SOZO 0030.150.02B		6		
8	SOZO 0030.050.003	Inner Lever	2		
	SOZO 0030.080.003		3		
	SOZO 0030.100.003		4		
	SOZO 0030.150.003		6		
9	GGUA 0030.050.003	Head Gasket	2		
	GGUA 0030.080.003		3		
	GGUA 0030.100.003		4		
10	GGUA 0030.150.003	Valve Head	6		
	SOZO 0030.050.005		2		
	SOZO 0030.080.005		3		
	SOZO 0030.100.005		4		
11	FOZO 0030.150.005		6		
	VTAC 1090.006.009	M6X12MM SCREW	2		
	VTAC 0020.100.009	M8X16MM SCREW	4-6		

49



**High Pressure (Two Way)
Ball Valves Square Body**

Manufacturer			Stocking
Number	Size	Westvac Number	WHS
U42446HY	1/4 7250PSI		
U40575HY	1/2 7250PSI	UE-U40575HY	
U40575C	3/4 5075PSI	UE-U40575C	
U40576HY	1" 5075PSI	UE-U40576HY	
U43941HY	1 1/4 5075PSI	UE-U43941HY	



**High Pressure 3 Way
Ball Valve Square Body
Style 7250 PSI**

Manufacturer			Stocking
Number	Size	Westvac Number	WHS
U44535	3/8 5800PSI		
AT130890	1/2 5075PSI		
AT130925	3/4 5075PSI	UE-AT130925	
AT130920	1" 5075PSI	UE-AT130920	
AT130919	1 1/4 5075PSI		



**Carbon Steel Hex
Ball Valves 2000
PSI**

Manufacturer			Stocking
Number	Size	Westvac Number	WHS
N10703-025CS	1/4	WV-V601-025	
N10703-038CS	3/8	WV-V601-038	
N10703-050CS	1/2		
N10703-075CS	3/4		
N10703-100CS	1"		
N10703-125CS	1 1/4		
N10703-150CS	1 1/2		
N10703-200CS	2"	WV-V601-200	



**High Pressure Ball
Valve Seal Kit
(Two Way)**

Manufacturer			Stocking
Number	Size	Westvac Number	WHS
U40576A	1 Buna	UE-U40576A	
U43941HYS	1 1/4 Buna		



**High Pressure Ball
Valve Seal Kit
(Three Way)**

Manufacturer			Stocking
Number	Size	Westvac Number	WHS
AT191290	1/2 Buna		
Not Available	3/4 Buna		
AT1815	1" Buna	UE-AT1815	
AT1840	1 1/4 Buna		



**Full Port Brass
Ball Valves**

Manufacturer			Stocking
Number	Size	Westvac Number	WHS
N10004-025BR	1/4		
N10004-038BR	3/8		
N10004-050BR	1/2		
N10004-075BR	3/4	WV-BV-075-BI	
N10004-100BR	1"	WV-BV-100-BI	
N10004-125BR	1 1/4	WV-B125-BI	
N10004-150BR	1 1/2	WV-BV150-BI	
N10004-200BR	2"		
N10004-250BR	2 1/2	WV-BV40	
N10004-300BR	3"		
N10004-400BR	4"		

High Pressure Ball Valve Handles



Manufacturer			Stocking
Number	Size	Westvac Number	WHS
U40575HYH	1/2	UE-U40575HYH	
AT1800	3/4 TO 1" 2&3 Way	UE-AT1800	
AT1825	1 1/4 2&3 Way	UE-AT1825	

BURNER ASSEMBLIES

Manufacturer Number	Description	Dynablast Model	Westvac Number	Stocking locations
HWHEEP609	ADC Burner-F12 Head - 1.0070A Nozzle w/Primary Control	200 Model		
HWHEEP607	ADC Burner-F12 Head - 1.7580A Nozzle w/Primary Control	300 Model		
HWHEEP608	ADC Burner-F22 Head - 2.2580A Nozzle w/Primary Control	420 Model		
HWHEEP1101	SDC Burner-F310 Head - 3.5080A Nozzle w/Primary Control	590 Model		
HWHEEP1102	SDC Burner-F310 Head - 4.0080A Nozzle w/Primary Control	690 Model		
HWHEEP1103	EH Burner - 4.5080B Nozzle w/Primary Control	700 Model		
HWHEEP1104	CF800 Burner-51357P Head - 5.0080B Nozzle w/Primary Control	900 Model		



BURNER MOTORS



Manufacturer Number	Description	Dynablast Model	Westvac Number	Stocking locations
HW52145U	ADC 1/7HP 13.5VDC Fan/Motor	13.5VDC 420 & Lower		
HW52146U	SDC 1/4HP 13.5VDC Fan/Motor	13.5VDC 590 & Higher		
HWHE21126	Wayne EH Burner Motor	HV700F & FLS		
HWHE21341U	CF800 Burner Motor	900 Model		

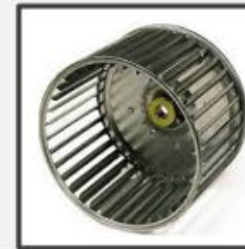
Manufacturer Number	Description	Dynablast Model	Westvac Number	Stocking locations
HW10090A	Fuel Nozzle	200 Model		
HW17580A		300 Model		
HW22580A		420 Model		
HW3.5080A		590 Model		
HW4.080A		690 Model		
HW4.580B		700 Model		
HW50080B		900 Model		

FUEL NOZZLES



FUEL PUMPS, PARTS AND ACCESSORIES

HW2591	12V Fuel Pump	590, 690 Models		
HWHE14375	120V Fuel Pump	700 Model		
HWHE21369U	Wayne EH Fuel Pump	HV700F & FLS		
HW21754U	12V Fuel Pump Solenoid	200, 300, 420 Models		
HW21441		590, 690 Models		
HW100310-001	Wayne Burner Fuel Solenoid	HV700FLS, HV700F		
HWHE2182602U	120V Fuel Pump Solenoid	900 Model		
HW21877U	Valve Stem Fits - PF103	Beckett Oil Burner Fuel Pump		
HW21807U	12V Fuel Solenoid Harness 13"	Beckett Fuel Pumps		



BURNER BLOWER WHEELS

Manufacturer Number	Description	Dynablast Model	Westvac Number	Stocking locations
HW21404	ADC Burner	200, 300 & 420 Models		
HW2383U	SDC Burner	590 & 690 Models		
HWHE21854	EH Burner	700 Model		
HWHE21339U	CF800 Burner	900 Model		

Pressure Washer Heater Components



FUEL FILTERS

Manufacturer Number	Description	Dynablast Model	Westvac Number	Stocking WHS
HWHE140RF	Paker Fuel Filter Element	All HV, CAB Heaters		
HWHE140R	Paker Fuel Filter Housing & Element	All HV, CAB Heaters		
HWHEFF25	Dynablast Fuel Filter Complete	All HV, CAB Heaters		
HWHEFF25ELM	Dynablast Fuel Filter (Element Only)	All HV, CAB Heaters		



BURNER MOTOR DRIVE COUPLER

Manufacturer Number	Description	Dynablast Model	Westvac Number	Stocking WHS
HWHE21505	Burner Motor Drive Coupler	200, 300, 420 Models		
HW2433	Flex Coupling 5/16 A	Becket Burners		
HW2154101U	SDC Burner Coupling	HV590, HV690F & FLS		
HWHE13279	Wayne EH Burner Coupling	HV700F & FLS		



PRIMARY CONTROLS

Manufacturer Number	Description	Dynablast Model	Westvac Number	Stocking locations
HW7505A0000U	120VAC Primary Control	HV700, HV900 F & FLS		
HWELCR2202W	Resistor for use on 120 Model Only	All 120V Models Only		

Note: Primary Control Needs 220OHM, 2 Watt Resistor



ELECTRODE INSULATOR ASSEMBLIES

Manufacturer Number	Description	Dynablast Model	Westvac Number	Stocking locations
HW5780	Electrodes F Head up to 9"	AF & AFG		
HWHE13286	Electrodes Wayne EH Burner	HV700F & FLS		
HWHE51345	Electrode Set of 2	900 Models		
HWHENL44XPDC	12V Electrode Nozzle Assembly w/Electrodes	200, 300, 420 Models		
HWNL44NJ	Electrode Gun Assembly Only	590 & 690 Models		



IGNITION TRANSFORMERS

Manufacturer Number	Description	Dynablast Model	Westvac Number	Stocking locations
HW5218301U	12V Ignition Transformers	200,300,420,590,690		
HWHE5218303		590, 690 Models		
HWHE51827U	120V Ignition Transformers	700 Model		
HWHE51824U		900 Model		
HW7006U	CAD Cell	All Fuel Oil Fired Hot Water Models		
HW32944001	Ferrite For Use On 12V Models Only	All 12V Models Only		



THERMOSTATS & TEMPERATURE DEVICES

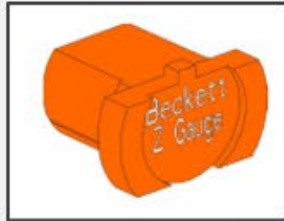
Manufacturer Number	Description	Dynablast Model	Westvac Number	Stocking WHS
HWTR86	Hot Water 230F (12V Models)	200, 300, 420, 590, 690 Models		
HWTR93	Hot Water 230F (12V Models)	200, 300, 420, 590, 690 Models		
HWTR90	Hot Water 230F (12V Models) w/SCH 160 Coils	420, 690 Models		
GP100439	Steam 325F (12V Models)	690, 700 Models		
HWMC7211LED	Hot Water 230F & Steam 325F (12V Models) 120V	700, 900 Models		
HWELATS7799-1IN	Thermocouple works with HWMC7211LED	700, 900 Models		
HWELATS7799-RTD	Thermocouple	420HMI Model		
HWT44110NL	Hot Water High Limit Switch 230F	All Hot Water Models		
HWT44165	Steam High Limit Switch 325F	All Steam Models		
HWELNATTD18125RWL	Hot Water High Limit Switch 125F	Specialty Models		
HWELNATTD18170RWL	Hot Water High Limit Switch 170F	Specialty Models		
HWELNATTD18200RWL	Hot Water High Limit Switch 200F	Specialty Models		
HWEL8036297	Dual Temp Switch	Specialty Models		

FLOW SWITCHES



Manufacturer Number	Description	Dynablast Model	Westvac Number	Stocking WHS
HWST6	8 GPM max, 1GPM Min 3/8 Brass 4000 PSI Rated	200 Model		
GP103011	16 GPM Max, .75 GPM Min 3/8 Brass 4000 PSI Rated	300,420,590,690,700,900 Model		
FL7SS	16 GPM Max, 1.06 GPM Min 3/8 SS 7300 PSI Rated	300, 420 Model		
FL12	26.4 GPM Max, 4 GPM Min 3/4 Brass 4000 PSI Rated	690,700 Model		
HWELA11ASQ	Relay for use with FL7SS/FL12	690,700 Model		

Coil & Insulation Kits



Burner Tool

Part Number	WHS
HWZ2000U	

Becket Z Gauge for use on all Beckett Burners

Manufacturer Number	Description	Dynablast Model	Westvac Number	Stocking locations
HW40052V	Coil Sch80	200 Model		
HW40195	Insulation Kit	200 Model		
HW40055HV	Coil Sch80	300 Model		
HW40201H	Insulation Kit	300 Model		
HW40165DCT	Coil Sch80	420 Model		
HW40201E	Insulation Kit	420 Model		
HW40259	Coil Sch80	590 Model		
HW40259KIT	Insulation Kit	590 Model		
HW40209	Coil Sch80	690, 700 Models		
HW40210	Coil Sch80	900 Models		
HW40209KIT	Insulation Kit	690, 700, 900 Models		
HW40165DCTHP	Coil SCH160	420 Model		
HW40209HP	Coil SCH160	690, 700 Models		



Note: Recommended when buying a new coil to order a new insulation kit



PRESSURE RELIEF VALVES

Manufacturer Number	Description	Dynablast Model	Westvac Number	Stocking locations
HWPURV500B	Pressure Relief Valve - Boiler SCH80	200,300,420 Model		
GP100984	Coil	590,690,700,900 Model		
GP100726	Pressure Relief Valve - Boiler	420 Model		
60520000P	SCH160 Coil	690,700 Model		
HWSSAA110-318-700	Pressure Relief Valve - Boiler Steam	690, 700 Model		



Contractor Tool

Part Number	WHS
HW52082U	

Beckett contractor tool for use on all Beckett Primary Controls

Control Box Switches & Controls



Manufacturer Number	Description	Dynablast Model	Westvac Number	Stocking locations
HWELVIDAB6011RZ	Rocker Switch ON/OFF	200, 300, 420 Models		
HWELVV1DABC0BAMC		590, 690 Models		
HWEL2602-11E		700, 900 Models		
HWELPBMC	Push Button Switch- Complete Kit	200, 300, 420, 590, 690, 700, 900 Models		
HWEL18235-12V	Voltmeter 12v	590, 690 Models		
HWEL18235	Voltmeter 120v	700, 900 Models		
HWELT61	Hour Meter 12V	200, 300, 420, 590, 690 Models		
HWELGO-891-204	Hour Meter 120V	700, 900 Models		
HWELW58XB1A4A-25	Circuit Breaker 25 AMP	200, 300, 420, 590, 690 Models		
HWELW58XB1A4A-15	Circuit Breaker 15 AMP	700, 900 Models		
HWEL2194A128V	12VDC Light	200, 300, 420, 590, 690 Models		
HWELKS3250	120VAC Light	700, 900 Models		

BURNER MOTOR GASKETS

Manufacturer Number	Description	Dynablast Model	Westvac Number	Stocking WHS
HW3616	Becket Round Gasket for Top Burner Flange ADC	200, 300, 420, 690 Models		
HW3380	Becket Square Gasket for Bottomm Burner Flange ADC/SC	200, 300, 420, 690 Models		
HWHE12484	Wayne EH Burner Gasket for HV700F	700 Model		





Hydro Excavation Truck Kit

Manufacturer Number	Size	Westvac Number	Stocking WHS
HV-101-KT	58X58		
HV-101-KTB	58X58 w/Ball Stud		

- 58 inch x 58 inch Bond Mat (Qty 2)
- Rugged Connection 10 ft cable and clamp attached to mat
- Visibility Perimeter Edges
- 10 ft Cable Assembly and Clamps (Qty 1)
- 22 ft Cable Assembly and Clamps (Qty 1)
- Stainless Steel Maintenance Brush (Qty 1)
- Storage Bag (Qty 1)



Bonding Mat w/Cable

Manufacturer Number	Size	Westvac Number	Stocking WHS
HV101-25-50V	58X58 w/3M Cable		
HV201-25-50V	58X120 w/4M Cable		
HV601-25-50V	120X120 w/4M Cable		



Bonding Mat

Manufacturer Number	Size	Westvac Number	Stocking WHS
101-25-50SR	58X58 Non Skid		
101-25-50V	58x58 Non Skid w/Reflective		
201-25-50SR	58x120 Non Skid		
601-25-50SR	120x120 Non Skid		
101-25-50BSF	58x58 Std w/Ball Stud		

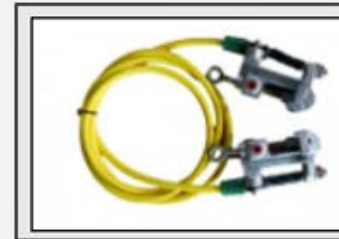
58x120 Standard

Manufacturer Number	Westvac Number	Stocking WHS
201-25-50		



Storage Bag

Manufacturer Number	Westvac Number	Stocking WHS
022SB		



#2 Cable w/Clamp

Manufacturer Number	Size	Westvac Number	Stocking WHS
3M/F	3M X #2 Cable	WV-3M/F	
5M/F	5M X #2 Cable		
7M/F	7M X #2 Cable	WV-7M/F	
9M/F	9M X #2 Cable		

Multi Clamp

Manufacturer Number	Westvac Number	Stocking WHS
B90-MCA	WV-B90-MCA	



Duckbill Ground Clamp

Manufacturer Number	Westvac Number	Stocking WHS
B90-DBA		

Ball Stud Clamp

Manufacturer Number	Westvac Number	Stocking WHS
B90-BCB		



Ball Stud (Long and Short)

Manufacturer Number	Westvac Number	Stocking WHS
B90-SLB		
B90-SSB		

4 Way Clamp

Manufacturer Number	Westvac Number	Stocking WHS
023C		



Clamp Maintenance Brush

Number	Westvac	WHS
039-MB		





Hydrostatic Fan Coupling

Part Number	Description	Westvac #	WHS
HYDROSTATIC FAN COUPLING			
644-0035	Complete Coupling		
644-0020	Keyed Coupler Half		
644-0041	Metal Ring		
644-0040	Rubber Insert	VC-6440040	
644-0022	Splined Coupler Half		
HYDROSTATIC PD BLOWER			
644-0085	Complete Coupling		
644-0151	Keyed Coupler Half		
644-0041	Metal Ring		
644-0040	Rubber Insert	VC-6440040	
644-0181	Splined Coupler Half		



Hydrostatic Pump Drive Belt

Part Number	Westvac #	WHS
640-0020	VC-6400020	

VAC-CON FAN & BLOWER COMPONENTS



Water System & Belt Drive Vacuum Belts

Part Number	Description	Westvac #	WHS
640-0001	5VX1180 3 RIB		
640-0002	5VX950 3 RIB		
640-0003	5VX1000 3 RIB	VC-6400003	
640-0004	5VX1250 3 RIB	VC-6400004	
640-0005	5VX1060 3 RIB		
640-0006	5VX1060 4 RIB	VC-6400006	
640-0007	5VX750 3 RIB		
640-0008	5VX1250 4 RIB		
640-0009	5VX1120 3 RIB		
640-0010	5VX1120 4 RIB		
640-0011	5VX750 4 RIB		
640-0012	5VX1400 3 RIB		
640-0013	5VX1180 4 RIB		
640-0027	5VX1320 3 RIB		
640-0028	5VX1000 4 RIB		
640-0029	5VX1320 4 RIB		
640-0030	5VX800 3 RIB		
640-0040	5VX950 6RIB		
640-0042	5VX 6 RIB	VC-6400042	

Sewer Cleaning Hose Reel Pillow Block Bearing

Part Number	Westvac #	WHS
644-0003	VC-6440003	



Aux Engine Drive Water Pump Flange Bearing

Part Number	Westvac #	WHS
644-0188	VC-6440188	



Vacuum Compressor Pillow Block Bearing

Part Number	Westvac #	WHS
644-0008	VC-6440008	



Vacuum Compressor Flange Bearing

Part Number	Westvac #	WHS
644-0009	VC-6440009	
644-0010	VC-6440010	



Vacuum Compressor Bearing Support Post

Part Number	Westvac #	WHS
810-1694	VC-8101694	



VAC-CON ELECTRICAL COMPONENTS



Boom Joystick

Part Number	Westvac #	WHS
631-0001	VC-6310001	



Boom Joystick Contact Blocks

Part Number	REQ	Westvac #	WHS
631-0002	2	VC-6310002	



Wireless Pendent and Controller

Part Number	Description	Westvac #	WHS
Without Emergency Stop Switch			
633-0888	Omnex Wireless Controller		
633-0889	Omnex Wireless Transmitter		
692-2851	Replacement Decal		
With Emergency Stop Switch			
633-1088	Omnex Wireless Controller		
633-1089	Omnex Wireless Transmitter	VC-6331089	
692-2851	Replacement Decal		
With Omnibus			
633-1488	Omnex Wireless Controller		
633-1489	Omnex Wireless Transmitter		
692-2851	Replacement Decal		



Omnex Pouch

Part Number	Description	WHS
WV-FMEC-2558-01	w/emergency stop	



Omnex Pouch

Part Number	Description	WHS
WV-1123	w/out emergency stop	



Circuit Breaker

Part Number	Westvac #	WHS
630-0081		
630-0082		
630-0083	VC-6300083	
630-0176		
630-0198		



Emergency Engine Stop Switch

Part Number	Westvac #	WHS
631-1061	VC-6311061	

VAC-CON TANK COMPONENTS



Rear Door Seal

All Units

Part Number	Westvac #	WHS
690-1179	VC-6901179	



DEBRIS TANK SEAL

Older Vac-con Units

Part Number	Description	REQ Qty	Westvac #	WHS
690-0848	Inlet Seal	1	VC-6900848	
690-0847	Outlet Seal	2	VC-6900847	



DEBRIS TANK SEAL

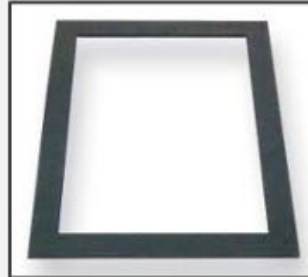
Newer Vac-con Units

Part Number	Description	REQ Qty	Westvac #	WHS
690-1826	Inlet Seal	1	VC-6901826	
690-1827	Outlet Seal	2	VC-6901827	



Float Ball

Part Number	Description	Westvac #	WHS
690-0023	6" Plastic	VC-6900023	
690-0745	6" Stainless		



**Vacuum Compressor
Clean-Out Door Gasket**

Part Number	Westvac #	WHS
690-0245	VC-6900245	



**Vacuum Compressor
Clean-Out Door Latches**

Part Number	Westvac #	WHS
711-6342	VC-7116342	



▲ Round Screen Weldment
800-9535

Round Screen Weldment

Part Number	Westvac #	WHS
800-9535	VC-8009535	



▲ "V" Screen Weldment
800-1459

V Screen Weldment

Part Number	Westvac #	WHS
800-1459	VC-8001459	



Vacuum Breaker Cylinder
2.00" Bore x 4.38 Stroke

Part Number	Westvac #	WHS
620-0187	VC-6200187	



Blower Filters
Molded End Cap - Polyester Felt - 16G Mild Steel - 5 Micron

Manufacturer Number	Compeditor Number	Size	Truck	Westvac Number	Stocking WHS
F81-17030	ME-237K5	OD 18 X ID 12 X OAH 17.750	Presvac/Cusco		
F81-17080	ME-462K5	OD 30 X ID 24 X OAH 18	Transway		
F81-17410		OD 13.625 X ID 11.625 X OAH 17.250	Foremost/Rival		
F81-17460	ME-332K5	OD 16 X ID 12.5 X OAH 11.5		FT-F81-17460	
F81-17488	SE-41438-00-V	OD 18 X ID 10 X OAH 20		FT-F81-17488	
F81-17499W		OD 19.625 X ID 14 X OAH 23		FT-F81-17499W	
F81-17501	ME-727K5-MC-OE	OD 19.625 X ID 14 X OAH 28.5	Vactor		
F81-17509	ME-728K5	OD 19.625 X ID 14 X OAH 24.5	Foremost/Rival		
F81-17538		OD 22 X ID 15.813 X OAH 23.75		FT-F81-17538	
F81-17557	ME-442K5	OD 26 X ID 20 X OAH 20.750	Schellvac		
F81-17588	ME-1516K5	OD 22 X ID 17 X OAH 21	Tornado	FT-F81-17588	
F81-17608		OD 20 X ID 12 X OAH 12			



Installation Kits

Manufacturer Number	Description	Westvac Number	Stocking WHS
GS2000	2 Sensor System (No Brake)		
GS3000	3 Sensor System (No Brake)		
GS4000	4 Sensor System (No Brake)		
GS2000A	2 Sensor System (Auto Brake)		
GS3000A	3 Sensor System (Auto Brake)	WV-GS3000A	
GS4000A	4 Sensor System (Auto Brake)		



Global System Air Valves

Manufacturer Number	Description	Westvac Number	Stocking WHS
GS06	Shuttle Valve	WV-GS06	
GS07	Electric Brake Valve	WV-GS07	
GS13	Pressure Protection Valve	WV-GS13	
GS17	Pressure Reducing Valve	WV-GS17	



Global System Brackets

Manufacturer Number	Description	Westvac Number	Stocking WHS
GS08	Electric Brake Valve Bracket	WV-GS08	
GS16	Sensor Mounting Box	WV-GS16	
GS28	Control Box Bracket	WV-GS28	

Global System Electrical Components

Manufacturer Number	Description	Westvac Number	Stocking WHS
GS01	Control Box	WV-GS01	
GS02	Control Box Cable	WV-GS02	
GS19	Junction Box	WV-GS19	
GS75	75Ft Harness	WV-GS75	
GS80	Terminal Block	WV-GS80	
GS81	Power Wire w/Fuse	WV-GS81	
GS82	Ground Wire	WV-GS82	
GS100	Sensor	WV-GS100	



Manufacturer Part Number Index

Description	Page	Description	Page	Description	Page	Description	Page	Description	Page	Description	Page
24.0065	Page 19	7700-12	Page 42	20022428	Page 18	200458312	Page 20	023C	Page 51	1002035-040	Page 19
24.0083	Page 19	20021348	Page 19	20022429	Page 18	200458315	Page 20	03 00 01 01 0 05 45	Page 34	1002035-060	Page 19
30.050	Page 35	20021349	Page 19	20107100	Page 37	200458320	Page 20	03 00 01 01 0 07 45	Page 34	1002035-080	Page 19
30.075	Page 35	20021350	Page 19	200009605	Page 15	200458325	Page 20	03 00 01 01 0 09 45	Page 34	1002035-100	Page 19
30.100	Page 35	20021351	Page 19	200033870	Page 20	200458330	Page 20	03 00 02 01 5 09 45	Page 34	1002035-120	Page 19
30.125	Page 35	20021352	Page 19	200357110	Page 20	200458712	Page 20	03 00 02 01 5 13 45	Page 34	1002036-010	Page 19
35.050	Page 35	20021353	Page 19	200357130	Page 20	200458715	Page 20	03 00 02 01 5 16 45	Page 34	1002036-020	Page 19
35.100	Page 35	20021354	Page 19	200357135	Page 20	200458720	Page 20	03 00 03 01 6 18 45	Page 34	1002036-030	Page 19
36.050	Page 36	20021355	Page 19	200357140	Page 20	200458725	Page 20	03 00 03 01 6 27 45	Page 34	1002036-040	Page 19
36.075	Page 36	20021356	Page 19	200357145	Page 20	200458730	Page 20	03 00 04 01 7 27 45	Page 34	1002036-050	Page 19
36.100	Page 36	20022299	Page 18	200357150	Page 20	200458982	Page 20	03 00 04 01 7 36 45	Page 34	1002036-060	Page 19
42.100A	Page 37	20022319	Page 19	200357155	Page 20	200458983	Page 20	03 00 06 01 8 36 45	Page 34	1002036-080	Page 19
42.100B-12	Page 37	20022320	Page 19	200357170	Page 20	200458984	Page 20	039-MB	Page 51	1002036-100	Page 19
42.100B-18	Page 37	20022321	Page 19	200357180	Page 20	200458985	Page 20	04 02 02 01 4 03 03	Page 36	1002036-120	Page 19
60.050	Page 36	20022322	Page 19	200357190	Page 20	200458986	Page 20	04 02 03 01 6 03 06	Page 36	10-0250-011	Page 41
60.075	Page 36	20022323	Page 19	200357510	Page 20	200458987	Page 20	04 02 04 01 6 03 06	Page 36	10-0250-100	Page 41
60.100	Page 36	20022324	Page 19	200357530	Page 20	200458988	Page 20	04 04 02 01 5 04 03	Page 36	1002616-030	Page 19
60.125	Page 36	20022325	Page 19	200357535	Page 20	200458989	Page 20	04 04 03 01 6 04 03	Page 36	1002616-0325	Page 19
600.080	Page 33	20022326	Page 19	200357540	Page 20	200458990	Page 20	04 04 04 01 7 04 06	Page 36	1002616-040	Page 19
007571	Page 25	20022327	Page 19	200357545	Page 20	200458991	Page 20	053 04 01 01 4 03 15	Page 34	1002616-045	Page 19
007573	Page 25	20022328	Page 18	200357550	Page 20	200458992	Page 20	06 03 01 01 4 Y Y 06	Page 35	1002616-050	Page 19
007574	Page 25	20022329	Page 18	200357555	Page 20	200458993	Page 20	06 03 01 02 5 Y Y 06	Page 35	1002616-055	Page 19
007905	Page 25	20022330	Page 18	200357560	Page 20	203240510	Page 15	06 03 01 03 6 Y Y 06	Page 35	1002616-060	Page 19
1001927	Page 19	20022331	Page 18	200357570	Page 20	203500550	Page 15	06 03 02 01 6 08 06	Page 35	1002616-080	Page 19
1001928	Page 19	20022332	Page 18	200357580	Page 20	203600600	Page 15	06 03 02 01 6 08 12	Page 35	1002616-100	Page 19
1002833	Page 18	20022333	Page 18	200357590	Page 20	403240510	Page 15	06 03 02 02 6 18 05	Page 35	1003308-030	Page 18
1002889	Page 19	20022334	Page 18	200457110	Page 20	710100005	Page 20	06 03 03 01 6 08 06	Page 35	1003308-040	Page 18
1002949	Page 19	20022380	Page 18	200457130	Page 20	02 01 01 01 4 04 06	Page 37	06 03 03 01 6 10 06	Page 35	1003308-050	Page 18
1002950	Page 19	20022381	Page 18	200457135	Page 20	02 01 01 03 5 04 06	Page 37	06 03 06 01 7 12 12	Page 35	1003308-060	Page 18
7600-4	Page 42	20022382	Page 18	200457140	Page 20	02 01 02 01 9 00 00	Page 37	06 03 06 01 7 16 22	Page 35	1003308-080	Page 18
7600-6	Page 42	20022383	Page 18	200457145	Page 20	02 01 03 01 9 00 00	Page 37	06 04 01 01 4 06 ZZ	Page 34	1003308-100	Page 18
7600-8	Page 42	20022384	Page 18	200457150	Page 20	02 03 01 01 4 03 04	Page 35	06 04 01 01 4 08 ZZ	Page 34	101-25-50BSF	Page 51
7600-10	Page 42	20022385	Page 18	200457155	Page 20	02 03 01 02 4 03 03	Page 35	06 04 02 01 5 08 ZZ	Page 34	101-25-50SR	Page 51
7600-12	Page 42	20022386	Page 18	200457160	Page 20	02 03 02 01 5 04 06	Page 35	06 04 02 01 5 10 ZZ	Page 34	101-25-50V	Page 51
7700-4	Page 42	20022424	Page 18	200457170	Page 20	02 03 02 02 5 04 06	Page 35	06 04 03 01 6 08 ZZ	Page 34	12FNPSM-12SC	Page 26
7700-6	Page 42	20022425	Page 18	200457180	Page 20	02 03 03 01 6 04 06	Page 35	06 04 03 01 6 10 ZZ	Page 34	12MP-12SC	Page 26
7700-8	Page 42	20022426	Page 18	200457190	Page 20	02 03 03 02 6 04 06	Page 35	0898XHD-16-16	Page 16	16FNPSM-16SC	Page 26
7700-10	Page 42	20022427	Page 18	200458312	Page 20	0225B	Page 51	1002035-020	Page 19	16MP-16SC	Page 26

Manufacturer Part Number Index

Description	Page	Description	Page	Description	Page	Description	Page	Description	Page	Description	Page
201-25-50	Page 51	4640TS-08-600	Page 26	640-0010	Page 52	690-1826	Page 54	8MS-8SC	Page 26	950-30	Page 41
201-25-50SR	Page 51	4640TS-08-800	Page 26	640-0011	Page 52	690-1827	Page 54	950-100	Page 41	950-300	Page 40
30.038N	Page 31	4EAF4	Page 16	640-0012	Page 52	692-2851	Page 53	950-103	Page 41	950-31	Page 40
30.100SP20	Page 31	53 01 01 01 4 06 10	Page 35	640-0013	Page 52	692-2851	Page 53	950-104	Page 41	950-31	Page 41
30.50AN-12	Page 31	5M/F	Page 51	640-0020	Page 52	692-2851	Page 53	950-105	Page 41	950-32	Page 41
30.50BN-12	Page 31	60.038N	Page 32	640-0027	Page 52	711-6342	Page 54	950-106	Page 41	950-39	Page 41
30.50C-12	Page 31	60.100L	Page 32	640-0028	Page 52	7600-10CW	Page 42	950-107	Page 41	960-100	Page 41
35.038N	Page 31	60.100L80	Page 32	640-0029	Page 52	7600-12CW	Page 42	950-108	Page 41	960-200	Page 40
36.025ANS	Page 32	60.125L	Page 32	640-0030	Page 52	7600-15	Page 42	950-109	Page 41	9922-0200	Page 16
36.025BNS	Page 32	600.100A	Page 33	640-0040	Page 52	7600-15CW	Page 42	950-110	Page 41	9927-8551	Page 16
36.038N	Page 32	600.100B	Page 33	640-0042	Page 52	7600-18	Page 42	950-111D	Page 41	9928-8551	Page 16
3602-041TG	Page 25	60049824P	Page 16	644-0003	Page 52	7600-18CW	Page 42	950-111S	Page 41	9M/F	Page 51
3602-047TC	Page 25	601-25-50SR	Page 51	644-0008	Page 52	7600-6CW	Page 42	950-113	Page 41	A0-6A	Page 27
3602-111TG	Page 25	60520000P	Page 49	644-0009	Page 52	7600-8CW	Page 42	950-115	Page 41	A3-145	Page 30
3602-192TG	Page 25	620-0187	Page 54	644-0010	Page 52	7600C-10	Page 42	950-118	Page 41	A3-150	Page 30
3602-193TG	Page 25	630-0081	Page 53	644-0020	Page 52	7600C-12	Page 42	950-1215	Page 41	A3-160	Page 30
3M/F	Page 51	630-0082	Page 53	644-0022	Page 52	7600C-15	Page 42	950-124	Page 41	A3-160-3000	Page 30
40.100A	Page 33	630-0083	Page 53	644-0035	Page 52	7600C-18	Page 42	950-209	Page 40	A3-180	Page 30
40.100A-SP10	Page 33	630-0176	Page 53	644-0040	Page 52	7600C-4	Page 42	950-210	Page 40	A4-245-3000	Page 30
40.100B	Page 33	630-0198	Page 53	644-0040	Page 52	7600C-6	Page 42	950-212	Page 40	A4-250-3000	Page 30
4525TS-12-500	Page 26	631-0001	Page 53	644-0041	Page 52	7600C-8	Page 42	950-213/214	Page 40	A4-260	Page 30
4625TS-12-400	Page 26	631-0002	Page 53	644-0041	Page 52	7600F-10	Page 42	950-215	Page 40	A4-280	Page 30
4625TS-12-600	Page 26	631-1061	Page 53	644-0085	Page 52	7600F-12	Page 42	950-219	Page 40	A4-2A45	Page 30
4625TS-12-800	Page 26	633-0888	Page 53	644-0151	Page 52	7600F-15	Page 42	950-220	Page 40	A4-2A50-3000	Page 30
4625TS-16-400	Page 26	633-0889	Page 53	644-0181	Page 52	7600F-18	Page 42	950-226	Page 40	A4-2A60	Page 30
4625TS-16-500	Page 26	633-1088	Page 53	644-0188	Page 52	7600F-21	Page 42	950-228	Page 40	A4-2A80	Page 30
4625TS-16-600	Page 26	633-1089	Page 53	680-0436	Page 15	7600F-24	Page 42	950-230	Page 40	A4-2N45	Page 30
4625TS-16-800	Page 26	633-1488	Page 53	66.21040.020	Page 32	7600F-4	Page 42	950-232	Page 40	A4-2N50-3000	Page 30
4630TS-12-400	Page 26	633-1489	Page 53	66.21040.040	Page 32	7600F-6	Page 42	950-240	Page 40	A4-2N60	Page 30
4630TS-12-500	Page 26	640-0001	Page 52	66.21040.060	Page 32	7600F-8	Page 42	950-245	Page 40	A4-2N80	Page 30
4630TS-12-600	Page 26	640-0002	Page 52	66.21040-080	Page 32	7700-15	Page 42	950-246	Page 40	A4-2NA45	Page 30
4630TS-12-800	Page 26	640-0003	Page 52	66.21060.200	Page 32	7700-18	Page 42	950-247	Page 40	A4-2NA50-3000	Page 30
4630TS-16-400	Page 26	640-0004	Page 52	690-0023	Page 54	7M/F	Page 51	950-25	Page 41	A4-2NA60	Page 30
4630TS-16-500	Page 26	640-0005	Page 52	690-0245	Page 54	800-1459	Page 54	950-26	Page 41	A4-2NA80	Page 30
4630TS-16-600	Page 26	640-0006	Page 52	690-0745	Page 54	800-9535	Page 54	950-27	Page 41	ARZO-0031-080-000	Page 44
4630TS-16-800	Page 26	640-0007	Page 52	690-0847	Page 54	810-1694	Page 52	950-28	Page 40	ARZO-0031-100-000	Page 44
4640TS-08-400	Page 26	640-0008	Page 52	690-0848	Page 54	8FNPSM-8SC	Page 26	950-28	Page 41	ARZO-0031-150-000	Page 44
4640TS-08-500	Page 26	640-0009	Page 52	690-1179	Page 54	8MP-8SC	Page 26	950-30	Page 40	ARZO-0033-100-000	Page 44

Manufacturer Part Number Index

Description	Page	Description	Page	Description	Page	Description	Page	Description	Page	Description	Page
ARZO-0033-150-000	Page 44	BR180-100	Page 12	DPNS-ORB	Page 21	F1-1125	Page 29	G2-304	Page 28	GGUA 0030.100.003	Page 44
ARZO-0041-100-000	Page 43	BR180-200	Page 12	DPNS-ORK	Page 21	F1-115	Page 29	G2-305	Page 28	GGUA 0030.150.003	Page 44
ARZO-0041-150-000	Page 43	BR180-300	Page 12	DPNSR-0040	Page 21	F1-125	Page 29	G2-306	Page 28	GGUA 0040.100.004	Page 43
ARZO-0043-100-000	Page 43	BR180-400	Page 12	DPNSR-0060	Page 21	F5-315	Page 29	G2-33	Page 28	GGUA 0040.150.004	Page 43
ARZO-0043-150-000	Page 43	BR180-600	Page 12	DPNSR-0080	Page 21	F5-315N	Page 29	G2-34	Page 28	GP100439	Page 48
ARZO-0580-100-000	Page 43	BR180-800	Page 12	DPNSR-0090	Page 21	F5-325	Page 29	G2-35	Page 28	GP100726	Page 49
ARZO-0580-150-000	Page 43	DO-4A	Page 27	DPNSR-0100	Page 21	F5-325N	Page 29	G40052HD	Page 24	GP100984	Page 49
ARZO-0580-200-000	Page 43	DO-5A	Page 27	DPNSR-0120	Page 21	F5-380	Page 29	G43947HD	Page 24	GP103011	Page 48
ARZO0929.100.000	Page 43	DO-5B	Page 27	DPNSRC-001	Page 21	F81-17410	Page 55	G2-36	Page 28	GS01	Page 56
ARZO0929.200.000	Page 43	DO-5B	Page 27	DPNS-SEAT	Page 21	F81-17460	Page 55	G45109	Page 16	GS02	Page 56
ARZO0930.100.000	Page 43	DO-6	Page 27	DPNS-SR	Page 21	F81-17488	Page 55	G5-13	Page 28	GS06	Page 56
ARZO0930.200.000	Page 43	DO-69	Page 27	DPPG-001	Page 22	F81-17499W	Page 55	G5-14	Page 28	GS07	Page 56
AS510855A	Page 8	DO-7	Page 25	DPSCT-001	Page 21	F81-17538	Page 55	G5-15	Page 28	GS08	Page 56
AT130890	Page 45	DO-7N	Page 25	DPSG-0012	Page 22	F81-17588	Page 55	G5-16	Page 28	GS100	Page 56
AT130919	Page 45	DO-8	Page 27	DPSG-0034	Page 22	F81-17608	Page 55	G7-303	Page 28	GS13	Page 56
AT130920	Page 45	DO-89	Page 27	DPSG-NC	Page 22	FL12	Page 48	G7-304	Page 28	GS16	Page 56
AT130925	Page 45	DO-8A	Page 27	DPSNCU-001	Page 21	FL7SS	Page 48	G7-306	Page 28	GS17	Page 56
AT1800	Page 45	DPEG-0012	Page 22	DPSS-005	Page 22	FL8-4CBX60	Page 6	G7-33	Page 28	GS19	Page 56
AT1815	Page 45	DPEG-NC	Page 22	DPSS-006	Page 22	FL8-4CBX72	Page 6	G7-34	Page 28	GS2000	Page 56
AT1825	Page 45	DPLW-005	Page 22	DPSS-007	Page 22	FOZO 0030.150.005	Page 44	G7-35	Page 28	GS2000A	Page 56
AT1840	Page 45	DPLW-006	Page 22	DPSSE-003	Page 22	FOZO 0040.100.005	Page 43	G7-36	Page 28	GS28	Page 56
AT191290	Page 45	DPLW-007	Page 22	DPSSE-004	Page 22	FOZO 0040.100.008	Page 43	G7-45	Page 28	GS3000	Page 56
B90-BCB	Page 51	DPLWE-003	Page 22	DPTG-001	Page 23	FOZO 0040.150.005	Page 43	G7-46	Page 28	GS3000A	Page 56
B90-DBA	Page 51	DPLWE-004	Page 22	DPTG-002	Page 23	FOZO 0041.100.001	Page 43	G8-303	Page 29	GS4000	Page 56
B90-MCA	Page 51	DPLWENC-003	Page 22	DPTG-003	Page 23	FOZO 0041.150.001	Page 43	G8-304	Page 29	GS4000A	Page 56
B90-SLB	Page 51	DPLWENC-004	Page 22	DPTG-004	Page 23	FOZO 0043.100.001	Page 43	G8-306	Page 29	GS75	Page 56
B90-SSB	Page 51	DPLWNC-005	Page 22	DPTG-005	Page 23	FOZO 0043.150.001	Page 43	G8-33	Page 29	GS80	Page 56
BLFW-1000-045-300	Page 13	DPLWNC-006	Page 22	DPTGNC-001	Page 23	FOZO0030.050.012	Page 44	G8-34	Page 29	GS81	Page 56
BLFW-100-110-300	Page 13	DPLWNC-007	Page 22	DPTGNC-002	Page 23	FOZO-0031-080-001	Page 44	G8-35	Page 29	GS82	Page 56
BLFW-125-080-300	Page 13	DPNS-0040	Page 21	DPTGNC-003	Page 23	FOZO-0031-100-001	Page 44	G8-36	Page 29	HTEC1001	Page 18
BLFW-150-080-300	Page 13	DPNS-0060	Page 21	DPTGNC-004	Page 23	FOZO-0031-150-001	Page 44	G8-403	Page 29	HTEC1255-20	Page 16
BLFW-200-070-300	Page 13	DPNS-0080	Page 21	DPTGNC-005	Page 23	FOZO-0033-100-001	Page 44	G8-406	Page 29	HTEC-1340	Page 10
BLFW-250-070-300	Page 13	DPNS-0090	Page 21	E2-1335	Page 29	FOZO-0033-100-001	Page 44	G8-46	Page 29	HTEC-1350	Page 10
BLFW-300-065-300	Page 13	DPNS-0100	Page 21	E2-1335V	Page 29	G0-13	Page 28	GFS4X4HS	Page 8	HTEC-6RUBBER	Page 10
BLFW-400-060-300	Page 13	DPNS-0120	Page 21	EA4F4	Page 16	G0-14	Page 28	GFS6X6HS	Page 8	HTEC6X4REDDT	Page 10
BLFW-500-060-300	Page 13	DPNS-FC	Page 21	EZ86120HX	Page 6	G0-15	Page 28	GFS8X8HS	Page 8	HTEC6X4REDHL	Page 10
BLFW-600-060-300	Page 13	DPNS-FC5P	Page 21	EZ86R460HX	Page 6	G0-16	Page 28	GGUA 0030.050.003	Page 44	HTEC6X6DT	Page 10
BLFW-800-045-300	Page 13	DPNSHDC-001	Page 21	F1-1115	Page 29	G2-303	Page 28	GGUA 0030.080.003	Page 44	HTEC6X6EX	Page 10

Manufacturer Part Number Index

Description	Page	Description	Page	Description	Page	Description	Page	Description	Page	Description	Page
HTEC6X6EX	Page 10	HW40165DCTHP	Page 49	HWHE13279	Page 47	IVRG-250-250	Page 12	PE300-200-LL	Page 13	S3000-00782A	Page 5
HTEC6X6HL	Page 10	HW40195	Page 49	HWHE13286	Page 47	IVRG-300-250	Page 12	PE300-250-LL	Page 13	S3000-00783	Page 5
HTEC-8RUBBER	Page 10	HW40201E	Page 49	HWHE140R	Page 47	IVRG-350-250	Page 12	PE300-300-LL	Page 13	S3000-00783-4	Page 5
HTEC8X6DT	Page 10	HW40201H	Page 49	HWHE140RF	Page 47	IVRG-400-250	Page 12	PE300-400-LL	Page 13	S3000-00784-4	Page 5
HTEC8X6EX	Page 10	HW40209	Page 49	HWHE14375	Page 46	IVRG-500-250	Page 12	PE300-500-LL	Page 13	S3000-00784A	Page 5
HTEC8X6HL	Page 10	HW40209HP	Page 49	HWHE21126	Page 46	IVRG-600-250	Page 12	PE300-600-LL	Page 13	S3000-00929	Page 5
HTEC8X6HLEX	Page 10	HW40209KIT	Page 49	HWHE21339U	Page 46	IVRG-800-250	Page 12	POOK	Page 27	S3000-00929B	Page 5
HTEC8X6REDDT	Page 10	HW40210	Page 49	HWHE21341U	Page 46	MHH-18	Page 27	PREF-10S	Page 13	S3000-01294	Page 5
HTEC8X6REDHL	Page 10	HW40259	Page 49	HWHE21369U	Page 46	MHH-26	Page 27	PREF-14S	Page 13	S3500-00001A	Page 3
HTEC-9999	Page 10	HW40259KIT	Page 49	HWHE21505	Page 47	MHH-36	Page 27	PREF-16S	Page 13	S3500-00001A	Page 4
HV101-25-50V	Page 51	HW50080B	Page 46	HWHE2182602U	Page 46	N10004-025BR	Page 45	PREF-20S	Page 13	S3500-00002A	Page 3
HV-101-KT	Page 51	HW52145U	Page 46	HWHE21854	Page 46	N10004-038BR	Page 45	PREF-8S	Page 13	S3500-00002A	Page 4
HV-101-KTB	Page 51	HW52146U	Page 46	HWHE51345	Page 47	N10004-050BR	Page 45	PWB1-025-100	Page 14	S3500-00002A	Page 9
HV201-25-50V	Page 51	HW5218301U	Page 47	HWHE51824U	Page 47	N10004-075BR	Page 45	PWB1-025-50	Page 14	S3500-00002S	Page 3
HV601-25-50V	Page 51	HW5780	Page 47	HWHE51827U	Page 47	N10004-100BR	Page 45	PWB1-025-75	Page 14	S3500-00002S	Page 4
HW100310-001	Page 46	HW7006U	Page 47	HWHE5218303	Page 47	N10004-125BR	Page 45	PWB1-0375-100	Page 14	S3500-00002S	Page 9
HW10090A	Page 46	HW7505A0000U	Page 47	HWHEEP1101	Page 46	N10004-150BR	Page 45	PWB1-0375-50	Page 14	S3500-00003A	Page 3
HW17580A	Page 46	HWEL18235	Page 50	HWHEEP1102	Page 46	N10004-200BR	Page 45	PWB1-0375-75	Page 14	S3500-00003A	Page 4
HW21441	Page 46	HWEL18235-12V	Page 50	HWHEEP1103	Page 46	N10004-250BR	Page 45	PWB1-050-100	Page 14	S3500-00003A	Page 9
HW2154101U	Page 47	HWEL2194A128V	Page 50	HWHEEP1104	Page 46	N10004-300BR	Page 45	PWB1-050-50	Page 14	S3500-00003A	Page 9
HW21754U	Page 46	HWEL2602-11E	Page 50	HWHEEP607	Page 46	N10004-400BR	Page 45	PWB1-050-75	Page 14	S3500-00003S	Page 3
HW21807U	Page 46	HWEL8036297	Page 48	HWHEEP608	Page 46	N10014L-050CS	Page 15	PWB2-025-100	Page 14	S3500-00003S	Page 3
HW2184402U	Page 46	HWELA11ASQ	Page 48	HWHEEP609	Page 46	N10014L-050SS	Page 15	PWB2-025-50	Page 14	S3500-00003S	Page 4
HW21877U	Page 46	HWELATS7799-1IN	Page 48	HWHEFF25	Page 47	N10703-025CS	Page 45	PWB2-025-75	Page 14	S3500-00003S	Page 4
HW22580A	Page 46	HWELATS7799-RTD	Page 48	HWHEFF25ELM	Page 47	N10703-038CS	Page 45	PWB2-0375-100	Page 14	S3500-00003S	Page 9
HW231404	Page 46	HWELCR2202W	Page 47	HWHENL44XPDC	Page 47	N10703-050CS	Page 45	PWB2-0375-50	Page 14	S3500-00003S	Page 9
HW2383U	Page 46	HWELGO-891-204	Page 50	HWMC7211LED	Page 48	N10703-075CS	Page 45	PWB2-0375-75	Page 14	S8500-00453	Page 9
HW2433	Page 47	HWELKS3250	Page 50	HWNL44NJ	Page 47	N10703-100CS	Page 45	PWB2-050-100	Page 14	S8500-00453AM	Page 9
HW2591	Page 46	HWELNATTD18125RWL	Page 48	HWPURV500B	Page 49	N10703-125CS	Page 45	PWB2-050-50	Page 14	S8500-00453BM	Page 9
HW3.5080A	Page 46	HWELNATTD18170RWL	Page 48	HWSSAA110-318-700	Page 49	N10703-150CS	Page 45	PWB2-050-75	Page 14	S8500-00453D	Page 9
HW32944001	Page 47	HWELNATTD18200RWL	Page 48	HWST6	Page 48	N10703-200CS	Page 45	RLC5	Page 3	S8500-00453E	Page 9
HW3380	Page 50	HWELPBMC	Page 50	HWT44110NL	Page 48	P100256	Page 30	RLC5	Page 4	S8500-00453F	Page 9
HW3616	Page 50	HWELT61	Page 50	HWT44165	Page 48	P100256	Page 30	RT-8651	Page 30	S8500-00453GG	Page 9
HW4.080A	Page 46	HWELVIDAB6011RZ	Page 50	HWTR86	Page 48	P100280	Page 30	RT-8652	Page 30	S8500-00453H	Page 9
HW4.580B	Page 46	HWELVV1DABC0BAMC	Page 50	HWTR90	Page 48	P100280	Page 30	RT-8802	Page 30	S8500-00453J	Page 9
HW40052V	Page 49	HWELW58XB1A4A-15	Page 50	HWTR93	Page 48	PE300-100-LL	Page 13	S3000-00347	Page 25	S8500-00454	Page 9
HW40055HV	Page 49	HWELW58XB1A4A-25	Page 50	HWZ2000U	Page 49	PE300-125-LL	Page 13	S3000-00347A	Page 25	S8500-00455	Page 9
HW40165DCT	Page 49	HWHE12484	Page 50	IVRG-200-250	Page 12	PE300-150-LL	Page 13	S3000-00781	Page 5	S8500-00455A	Page 9

Manufacturer Part Number Index

Description	Page	Description	Page	Description	Page	Description	Page	Description	Page	Description	Page
S8500-00455AFHE	Page 3	SCM-08	Page 26	U10749A-SPS	Page 8	U32087A	Page 7	U41269	Page 17	U43941HY	Page 45
S8500-00455AHE	Page 3	SCM-12	Page 26	U10749B-SPA	Page 8	U32087A	Page 7	U41270	Page 17	U43941HYS	Page 45
S8500-00455BHE	Page 3	SCM-16	Page 26	U14915	Page 8	U32087A	Page 9	U41272	Page 17	U43947	Page 24
S8500-00455FBHE	Page 3	SEMI 0040.100.002	Page 43	U15338	Page 8	U34614	Page 8	U41274	Page 17	U43947A-30	Page 24
S8500-00455FCHE	Page 3	SEMI 0040.150.002	Page 43	U15338C	Page 8	U34615	Page 8	U41274	Page 17	U44215	Page 12
S8500-00455FHE	Page 3	SJS-HD	Page 27	U16584	Page 6	U34766	Page 9	U41279	Page 17	U44535	Page 45
S8500-02868	Page 5	SOZO 0030.050.003	Page 44	U16584	Page 7	U34766-1	Page 9	U41280	Page 17	U44647	Page 24
S8500-02869	Page 5	SOZO 0030.050.005	Page 44	U16584	Page 9	U34766A	Page 9	U41759	Page 24	U44648	Page 24
S8500-03149	Page 5	SOZO 0030.050.02A	Page 44	U16585	Page 10	U34766B	Page 9	U42084	Page 24	U44650	Page 24
S8500-03149	Page 5	SOZO 0030.050.02B	Page 44	U16585A	Page 6	U34766D	Page 9	U42085	Page 24	U45046	Page 25
S8500-03150	Page 5	SOZO 0030.080.003	Page 44	U16585A	Page 6	U34766E	Page 9	U42446HY	Page 45	U45047	Page 25
S8510-00285	Page 4	SOZO 0030.080.005	Page 44	U16585A	Page 7	U34766F	Page 9	U42580	Page 5	U45054	Page 25
S8510-00285A	Page 4	SOZO 0030.080.02A	Page 44	U16585A	Page 7	U34766G	Page 9	U42580A	Page 5	U45606	Page 12
S8510-00286	Page 4	SOZO 0030.080.02B	Page 44	U16585A	Page 9	U34766M	Page 9	U42581	Page 5	U45739	Page 12
S8510-00287	Page 4	SOZO 0030.100.003	Page 44	U16585A	Page 9	U34766N	Page 9	U42582	Page 5	U45797	Page 17
S8510-00287A	Page 9	SOZO 0030.100.005	Page 44	U16585A	Page 10	U35096	Page 8	U42583	Page 5	U45803	Page 17
S8510-00287AA	Page 9	SOZO 0030.100.02A	Page 44	U-189	Page 27	U35096A	Page 8	U42583B	Page 5	U46134	Page 17
S8510-00287B	Page 9	SOZO 0030.100.02B	Page 44	U20720A	Page 13	U40011	Page 8	U42584	Page 5	U46135	Page 17
S8510-00287D	Page 9	SOZO 0030.150.003	Page 44	U20720D	Page 13	U40011A	Page 8	U42585	Page 5	U46136	Page 17
S8510-00288	Page 4	SOZO 0030.150.02A	Page 44	U20720G	Page 13	U40011B	Page 8	U42586	Page 3	U46137	Page 17
S8510-00289	Page 4	SOZO 0030.150.02B	Page 44	U20720H	Page 13	U40011C	Page 8	U42586	Page 4	U46138	Page 17
S8510-00290	Page 4	SPZO 0030.050.007	Page 44	U20720Z	Page 13	U40011D	Page 8	U42586	Page 9	U46140	Page 17
S8510-00453GGHE	Page 3	SPZO 0030.100.006	Page 44	U20735	Page 8	U40029	Page 16	U42587	Page 3	U53348	Page 8
S8510-01147	Page 4	SPZO 0040.100.006	Page 43	U25268	Page 9	U40029A	Page 16	U42587	Page 4	U53490	Page 5
S8510-01148	Page 4	SPZO 0040.100.006	Page 44	U25268A	Page 9	U40052	Page 24	U42587	Page 9	U53494	Page 5
S8510-01148A	Page 4	TOZO 0030.050.007	Page 44	U25268B	Page 9	U40052-008	Page 24	U42588	Page 3	U58795	Page 8
S8510-01371	Page 4	TOZO 0030.050.010	Page 44	U25268C	Page 9	U40052-009	Page 24	U42588	Page 4	U58795EH	Page 8
S8510-01373	Page 4	TOZO 0030.080.010	Page 44	U25268D	Page 9	U40052-010	Page 24	U42588	Page 9	U58795H	Page 8
S8510-01374	Page 4	TOZO 0030.100.007	Page 44	U25268E	Page 9	U40052A	Page 24	U42588	Page 9	U70846	Page 12
S8510-01374A	Page 4	TOZO 0030.100.010	Page 44	U25268F	Page 9	U40052A-30	Page 24	U42592	Page 12	U71271	Page 17
S8510-01374AFHE	Page 3	TOZO 0030.150.10A	Page 44	U25268G	Page 9	U40375	Page 24	U42593	Page 12	U71273	Page 17
S8510-01374AHE	Page 3	TOZO 0040.100.003	Page 43	U25268H	Page 9	U40575C	Page 45	U42594	Page 12	UA23788	Page 6
S8510-01375	Page 4	TOZO 0040.100.007	Page 43	U25268J	Page 9	U40575HY	Page 45	U43388	Page 12	UA25268	Page 6
S8510-01376	Page 4	TOZO 0040.100.007	Page 44	U25268K	Page 9	U40575HYH	Page 45	U43389	Page 12	UA25268A	Page 6
SAZO 0030.080.015	Page 44	TOZO 0040.150.003	Page 43	U25268L	Page 9	U40576A	Page 45	U43413	Page 8	UA25268C	Page 6
SAZO 0030.100.015	Page 44	TPU1040	Page 16	U25268M	Page 9	U40576HY	Page 45	U43414	Page 8	UA25268D	Page 6
SAZO 0030.150.015	Page 44	TPU1040H	Page 16	U32087A	Page 6	U40867	Page 25	U43415	Page 12	UA25268F	Page 6
SAZO 0040.100.011	Page 43	U10749A	Page 8	U32087A	Page 6	U41268	Page 17	U43784	Page 12	UA25268G	Page 6

Manufacturer Part Number Index

Description	Page	Description	Page	Description	Page	Description	Page	Description	Page	Description	Page
UA25268H	Page 6	UA-34763A	Page 7	UA34766G	Page 6	VTAC 0030.050.008	Page 44	WMBH4S120	Page 3		
UA25268I	Page 6	UA-34763AA	Page 7	UA34766G-8	Page 6	VTAC 0030.100.008	Page 44	WMBH4X84	Page 3		
UA25268M	Page 6	UA34763A-1F	Page 7	UA34766H	Page 6	VTAC 1090.006.009	Page 44	WV-1123	Page 53		
UA25268Q	Page 6	UA34763AA-1F	Page 7	UA34766J	Page 6	WV-6MBX4MC	Page 4	WV-FMEC-2558-01	Page 53		
UA25637	Page 7	UA34763AAHE	Page 6	UA34766J-8	Page 6	WV-8MBX4MC	Page 4	UA3CRWN	Page 6		
UA25637-1F	Page 7	UA34763AAHE-8	Page 6	UA34766K	Page 6	WV-6MBX6MC	Page 4	UA3CRWN	Page 6		
UA25637A	Page 7	UA34763AHE	Page 6	UA34766K-8	Page 6	WV-8MBX6MC	Page 4	WV-53207	Page 16		
UA25637A-1F	Page 7	UA34763C	Page 7	UA34766NA-8	Page 6	WV-6FX4MC	Page 7	WV-RVRIPREP	Page 18		
UA25637AHE	Page 6	UA34763CHE	Page 6	UA34767	Page 6	WV-8FX4MC	Page 7				
UA25637B	Page 7	UA34763D	Page 7	UE69504	Page 27	WV-8FX6MC	Page 7				
UA25637C	Page 7	UA34763D-1F	Page 7	UE69504-.50	Page 27	WV-6MBX4MC	Page 11				
UA25637C-1F	Page 7	UA34763DHE	Page 6	UE69504-.75	Page 27	WV-6MBX6MC	Page 11				
UA25637CHE	Page 6	UA34763E	Page 7	UE69506	Page 27	WV-8MBX4MC	Page 11				
UA25637D	Page 7	UA34763E-1F	Page 7	UE69506-.75	Page 27	WV-8MBX6MC	Page 11				
UA25637D-1F	Page 7	UA34763EHE	Page 6	UE69508	Page 27	WV-6FX6MB	Page 11				
UA25637DHE	Page 6	UA34763F	Page 7	UE69508-.75	Page 27	WV-6FX8MB	Page 11				
UA25637E	Page 7	UA34763F-1F	Page 7	UE69510	Page 27	WV-8FX6F	Page 11				
UA25637E-1F	Page 7	UA34763FHE	Page 6	UE69510-.75	Page 27	WV-8FX6MB	Page 11				
UA25637EHE	Page 6	UA34763G	Page 7	UE69512	Page 27	WV-8FX8MB	Page 11				
UA25637F	Page 7	UA34763GHE-8	Page 6	UE69512-.75	Page 27	WV-6FX4MC	Page 11				
UA25637G	Page 7	UA34763H	Page 7	UE69515	Page 27	WV-8FX4MC	Page 11				
UA25637G-1F	Page 7	UA34763K	Page 7	UE69515-.75	Page 27	WV-8FX6MC	Page 11				
UA25637GHE	Page 6	UA34763K-1F	Page 7	UEM616585-4	P 6,7,9,10	WV-6FX6FB	Page 11				
UA25637J	Page 7	UA34763KHE	Page 6	UEM616585-8	P 6,7,9,10	WV-8FX6FB	Page 11				
UA25637K	Page 7	UA34763KHE-8	Page 6	USLV4X8	Page 3	WV-8FX8FB	Page 11				
UA25637M	Page 7	UA34763L	Page 7	USLV4X8	Page 6	WV-LANCE-80A-3	Page 15				
UA25637M-1F	Page 7	UA34763RHE	Page 6	USLV6X8	Page 3	WV-LANCE-80A-5	Page 15				
UA25637N	Page 7	UA34766	Page 6	USLV6X8	Page 6	WV-LANCE-80A-6	Page 15				
UA25637P	Page 7	UA34766A	Page 6	USLV8X8	Page 3	WV-LANCE-80A-8	Page 15				
UA25637Q	Page 7	UA34766AA-8	Page 6	USLV8X8	Page 6	WV-LANCE-80A-10	Page 15				
UA25637R	Page 7	UA34766B	Page 6	UTP2140HR	Page 16	WV-LANCE-40S-2	Page 15				
UA25637R-1F	Page 7	UA34766B-8	Page 6	UTP2140R	Page 16	WV-LANCE-40S-3	Page 15				
UA25637RHE	Page 6	UA34766C	Page 6	V6800015	Page 6	WV-LANCE-40S-4	Page 15				
UA25637T	Page 7	UA34766C-8	Page 6	V6800015	Page 7	WV-LANCE-40S-5	Page 15				
UA25637U	Page 7	UA34766D	Page 6	V6800015H	Page 6	WV-LANCE-40S-6	Page 15				
UA-25637U-1F	Page 7	UA34766E-8	Page 6	V6800015H	Page 7	WV-LANCE-40S-7	Page 15				
UA25637V	Page 7	UA34766F	Page 6	VTAC 0020.100.009	Page 43	WV-LANCE-40S-8	Page 15				
UA25637WHE	Page 6	UA34766F-8	Page 6	VTAC 0020.100.009	Page 44	WV-LANCE-40S-10	Page 15				

Note: Part numbers highlighted in Red don't have a manufactured part number. Westvac number is supplied instead



 1-866-962-1218

 achesonparts@westvac.com

 westvac.com



Acheson, AB
26609 111 Ave
T7X 6E1
T 780-962-1218
F 780-962-2230

Calgary, AB
3534 48 Ave SE
T2B 3L6
T 403-272-1334
F 403-272-1584

Surrey, BC
107, 9488 189 St
V4N 4W7
T 604-455-0084
F 604-455-0086

Saskatoon, SK
100, 3926 Burron Ave
S7P 0E1
T 306-975-9400
F 306-975-9404

Winnipeg, MB
2, 1830 Dublin Ave
R3H 0H3
T 204-953-6644
F 204-633-4878