



2026 CARL THIBAULT PUMPER



Acheson, AB
26609 111 Ave
T7X 6E1
T 780-962-1218
F 780-962-2230

Calgary, AB
3534 48 Ave SE
T2B 3L6
T 403-272-1334
F 403-272-1584

Surrey, BC
107, 9488 189 St
V4N 4W7
T 604-455-0084
F 604-455-0086

Saskatoon, SK
100, 3926 Burron Ave
S7P 0E1
T 306-975-9400
F 306-975-9404

Winnipeg, MB
2, 1830 Dublin Ave
R3H 0H3
T 204-953-6644
F 204-633-4878

BUILD SPECIFICATIONS

CHASSIS

- Freightliner M2-106, 4 doors 2026
- Engine Detroit 375 HP
- Allison automatic transmission

PUMP COMPARTMENT AND BODY

- Pump compartment and body made of Stainless Steel
- Enclose pump panel with roll-up doors on each side

PUMP

- Pump Hale QMAX 1250 i.g.p.m.
- Stainless steel piping

WATER TANK

- Tank capacity of 1000 Gal. Imp.

ADDITIONAL INLETS AND OUTLETS

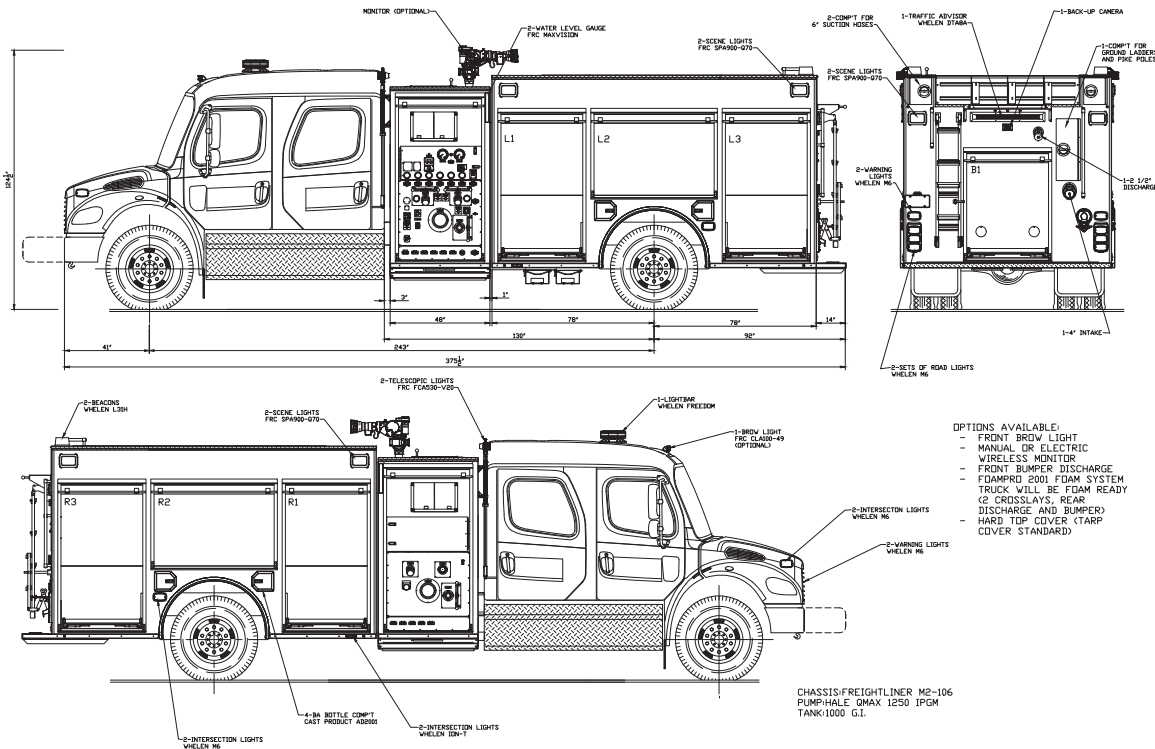
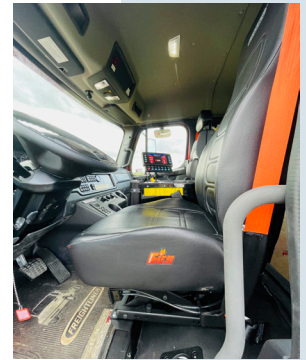
- Right and left side 6" intake with Hale MIV valves and priming capabilities
- 1x 4in rear intake
- 2x 2½in left side discharge
- 1x 2½in right side discharge
- 1x 4in right side discharge
- 1x 2½in rear discharge
- 1x deckgun outlet
- 2x 1½ in preconnect "speedlay"

BUMPER OUTLET FOAM SYSTEM

- Bumper, speedlays and rear discharge ready for foam
- FoamPro Series 2000 foam system

HOSE BED

- Hard cover with manual opening



- OPTIONS AVAILABLE:
- FRONT BROW LIGHT
 - MANUAL OR ELECTRIC WIRELESS MONITOR
 - FRONT BUMPER DISCHARGE
 - FIDAMPRO 2000 FOAM SYSTEM TRUCK WILL BE FOAM READY (2 CRISSELSAYS, REAR DISCHARGE AND BUMPER)
 - HARD TOP COVER (TARP COVER STANDARD)

PRELIMINARY

COMP'T NO.	L1	L2	L3	R1	R2	R3	B1
W	40	58	40	40	58	40	38
H	64	34	64	64	34	64	45
D	15	15	15	15	15	15	27

W= WIDTH OF COMP'T
 H= HEIGHT OF COMP'T
 D= DEPTH OF COMP'T

PREPARED BY: Carl Thibault Inc.
 DATE: 10/18/2023
 PROJECT: WESTVAC INDUSTRIAL
 DRAWING NO: PUMPER 1000 IMP. GAL.